



Department of Transportation
HIGHWAY DIVISION

P.O. Box 1128
Roseburg, Oregon 97470
440-3419

FILED
RECEIVED

OCT 1 1984

COUNTY SURVEYOR
DOUGLAS COUNTY, ORE.

In Reply Refer to
File No.:

September 27, 1984

Fritz Ingram
Douglas County Surveyor
Room 205 Justice Building
Roseburg, Oregon 97470

Submitted to you, per Oregon Law, are "Oregon Corner Restoration Forms", in connection with recent surveys performed by this office. Following are the corner forms submitted:

S.E. Corner Orley Hull D.L.C. #54, T 28 S., R. 7 W.

N.E. Corner Orley Hull D.L.C. #54, T 28 S., R. 7 W.

N.E. Corner Section 29, T 28 S., R. 7 W.

S. $\frac{1}{4}$ Corner Section 29, T 28 S., R. 7 W.

E. $\frac{1}{4}$ Corner Section 29, T 28 S., R. 7 W.

M.G. Havig
M.G. Havig, P.E., P.L.S.
Regional Locating Manager

cc: George Strawn
Region
File

FILED
RECEIVED

OCT 1 1984

OREGON CORNER RESTORATION FORM
Section 29 Township 28 S Range 7 W
County Douglas Date Feb 10, 1984

COUNTY SURVEYOR
DOUGLAS COUNTY, ORE.

Corner Designation

1/4 Corner common to Sections
29 and 28 Township 28 South
Range 7 west

- Condition Report Only
- Not Found
- Renewed
- Unrecorded
- Surveyed In
- Referenced Out

Previous Renewals/Surveys, etc. First Renewal By G.G. Stewart #28
Sept. 1922, Second Renewal by J.W. Byron April 24, 1956 Renewal
#123 County file #47/176

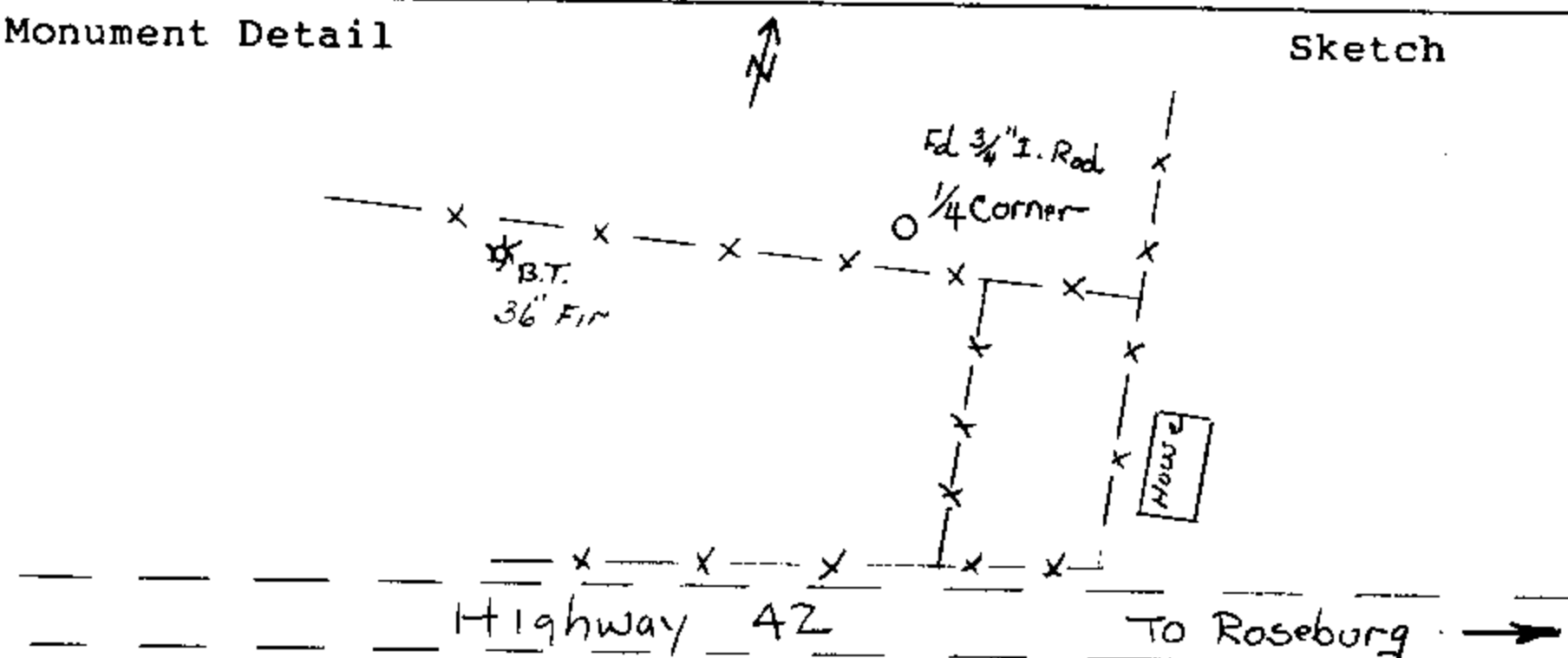
Monument(s) & Accessories Found: (Condition and Source)

Found B.T. 28" Fir Now a 36" dia. fir with tag, Bears S 81° 30' W
317.8 ft. Tag has no distance and direction.

Fd at 1/4 corner 3/4" I. Rod 16" Below ground in good
condition

Monument Detail

Sketch



Monument Set (Procedures and Description)

New Accessories

Location & Comments

MONUMENT LIES APPROX. 1300 ft North of the
Roseburg/Coos Bay Highway 42
A few ft. North of a EAST-WEST cross fence
AND APPROX 100 ft west of a North South fence on the
EAST LINE of D.L.C #54
Compass Declination Firm/Agency Oregon State Hwy Div.
Address 1523 S.E. COBB
Roseburg, Oregon
Party Chief Louis Lathrop
Notes _____
Witness _____

Surveyor's Seal

REGISTERED
PROFESSIONAL
LAND SURVEYOR

Martin G. Havig

OREGON
SEPT. 23, 1877
MARTIN G. HAVIG
1212

FILED
RECEIVED

OREGON CORNER RESTORATION FORM

OCT 1 1984

Section 28 Township 28 S Range 7 W

COUNTY SURVEYOR
DOUGLAS COUNTY, ORE.

County Douglas Date Feb 10, 1984

Corner Designation

S.E. CORNER of OLEY HUKKS
DONATION LAND CLAIM #54

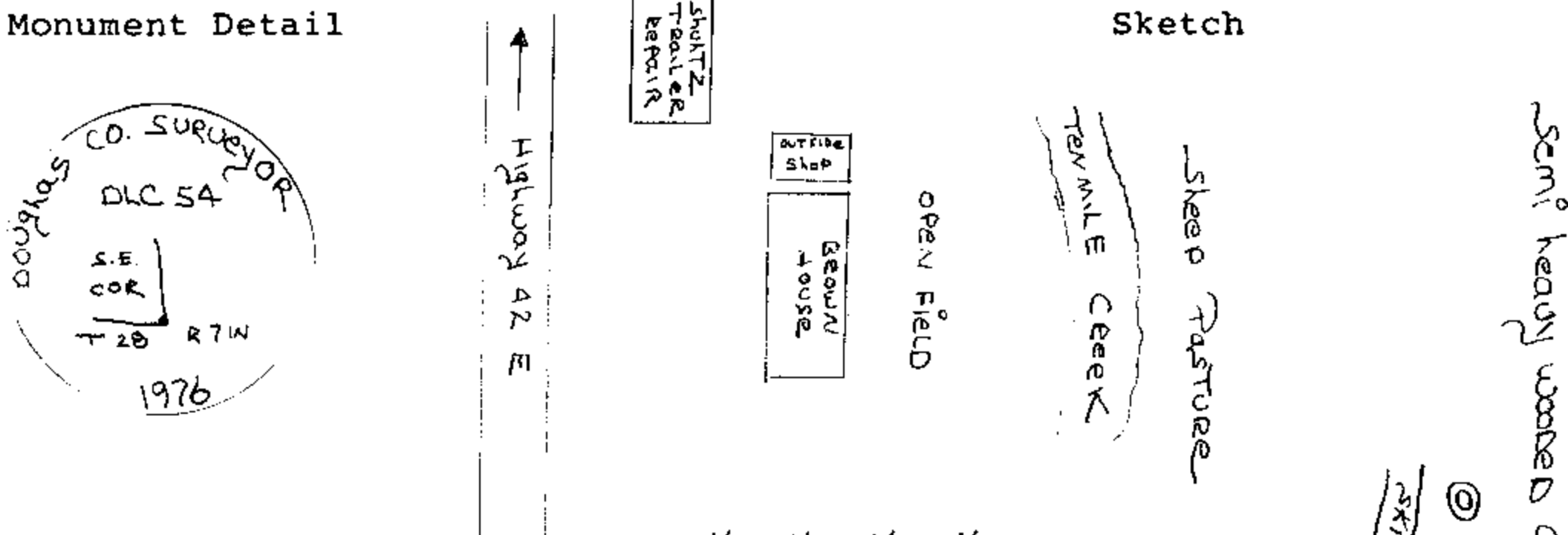
- Condition Report Only
- Not Found
- Renewed
- Unrecorded
- Surveyed In
- Referenced Out

Previous Renewals/Surveys, etc. Renewed by G.B. STEWART 1922, Renewal # 29, Renewed in 1957 by James BYRON, Renewal # 125, Renewed again in 1976 by Victor Cangle, Renewal # 231

Monument(s) & Accessories Found: (Condition and Source)

Found 2 1/2" Brass Cap on a IRON pipe set in 1976. also
Found a total of 5 bearing trees, a 28" fire stump bearing
N. 76° W 9.3 ft, a 10" fire (now 23") snag bears N 20° W 24.4',
a 16' maple bears S. 46° E, 12.4', tag now is basically unreadable,
but bearing distance does correspond. also found a 6" fire
(now) 12" bears N 2 1/2° E, 15.1' set in 1976, and a
9" fire (now 12") bearing S 35 1/2° E, 33.5', also set
in 1976.

Monument Detail



Monument Set (Procedures and Description)

New Accessories

Location & Comments

a 2 1/2" Brass Disc set Compass Declination
on a iron pipe set in Firm/Agency O.D.O.T
1976, appeared to be
in excellent condition Address 1038 W. Harvard
Cap was elevated approx. Roseburg, Oregon, 97470
3" above groundline. Party Chief R. Small
The old 3/4" iron pipe Notes
in a deteriorated state Witness
lies 2" to the east of
the new Brass Disc.

Surveyor's Seal



OK
C.S. File No. 58/164-8b

FILED
RECEIVED

OCT 1 1984

OREGON CORNER RESTORATION FORM

Section 29 Township 28 S Range 7 W
County Douglas Date Feb 10, 1984

COUNTY SURVEYOR
DOUGLAS COUNTY, ORE.

Corner Designation

Section Corner common to Sections
20, 21, 26 and 29 Township 28 S.
Range 7 west.

- Condition Report Only
- Not Found
- Renewed
- Unrecorded
- Surveyed In
- Referenced Out

Previous Renewals/Surveys, etc. First Renewal By G.G. Stewart
Sept. 1922 County Renewal #21, Second Renewal By J.W. Byron
October 16, 1956 County Renewal #63 County Survey file #47-176

Monument(s) & Accessories Found: (Condition and Source)

FOUND at corner a 2 1/2" Brass cap set in 2" pipe 9" above ground
in good condition

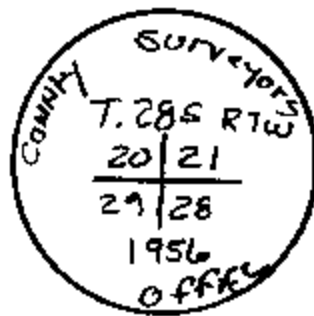
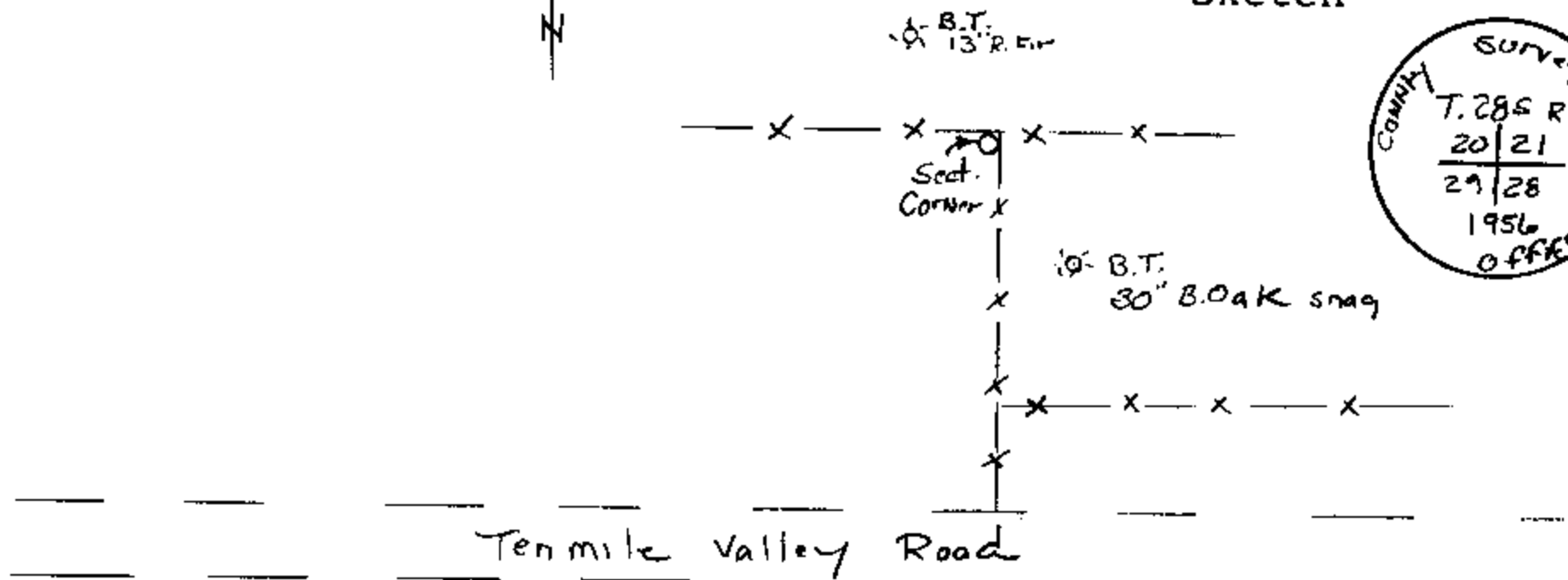
FOUND original B.T. 30" dia. B.O. now a snag, bears S 39° E, 38.2 ft.
with tag.

FOUND B.T. 10" R. Fir now a 13" R. Fir with tag marked by J.W. Byron in
1956, bears N 38° 15' E, 26.3 feet

Monument Detail



Sketch



Monument Set (Procedures and Description)

New Accessories

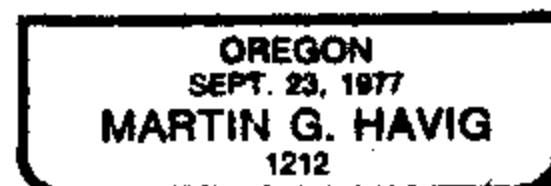
Location & Comments

Monument lies approx. 1700 ft. North of Tenmile Valley Road in fence corner. Compass Declination _____
 Firm/Agency Oregon State Highway Div.
 Address 1523 S.E. COBB
Roseburg, Oregon
 Party Chief Louis Lathrop
 Notes _____
 Witness _____

Surveyor's Seal



Martin G. Havig



C.S. File No. 58/164-

FILED
RECEIVED

OCT 1 1984

OREGON CORNER RESTORATION FORM

Section 28 Township 28S Range 7W

COUNTY SURVEYOR
DOUGLAS COUNTY, ORE.

County Douglas Date Feb 10, 1984

Corner Designation

N.E. CORNER of Okeley HULL
DONATION land chain #54

- Condition Report Only
- Not Found
- Renewed
- Unrecorded
- Surveyed In
- Referenced Out

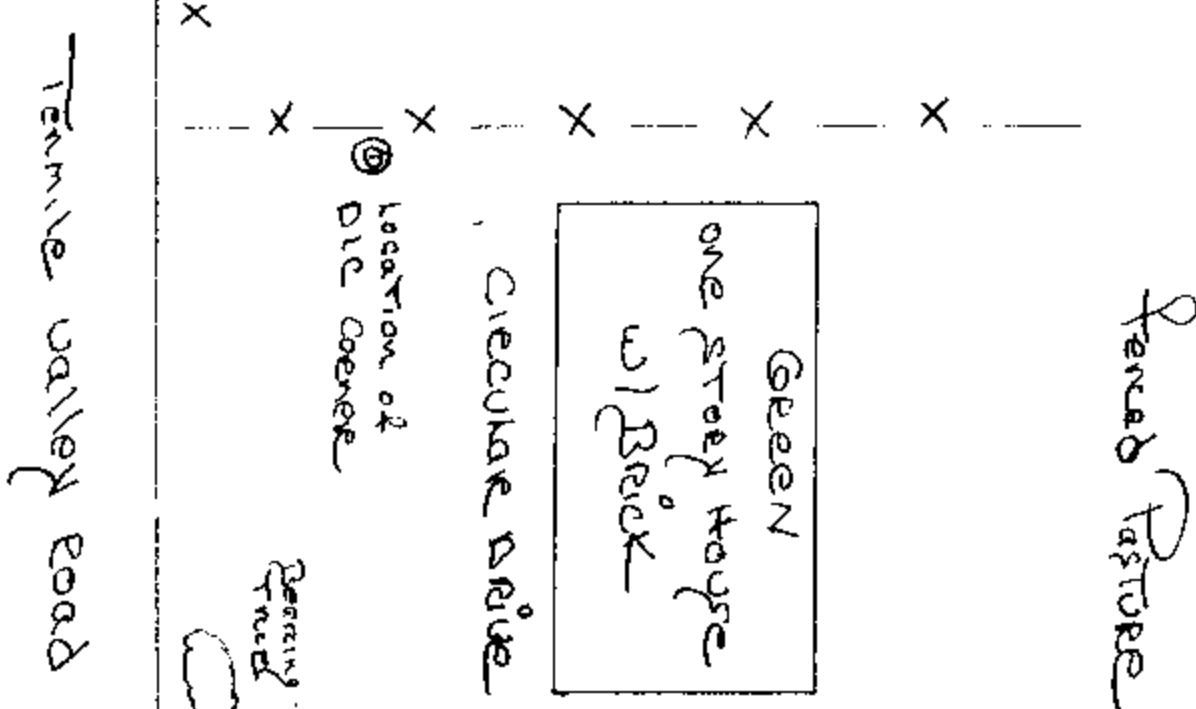
Previous Renewals/Surveys, etc. Renewed in 1922 by B.B. STARNET,
Renewal # 30; and again in 1955 by James W. Byron,
Renewal # 62. County Surveyor File # 47125.

Monument(s) & Accessories Found: (Condition and Source)

Found 1/2" iron pipe approx. 1" above ground line,
next to N.S. fence line. Only one bearing tree was
found, a 30" pine (now 36") (Bearing N 66° W, 53.2.
Distance was erroneously marked as 3'. Bearing Tree
Tag was not facing monument.

Monument Detail

Sketch



Monument Set (Procedures and Description)

New Accessories

Location & Comments

Surveyor's Seal

The 1/2" Iron Pipe Compass Declination _____
is very loose in the Firm/Agency O.D.O.T
ground, and could _____
easily be pulled out. Address 1038 W. Howard
Roseburg, Oregon 97470
 Party Chief _____
 Notes _____
 Witness _____



FILED
RECEIVED

OCT 1 1984

OREGON CORNER RESTORATION FORM

Section 29 Township 28 S Range 7 W

County Douglas Date Feb 10, 1984

COUNTY SURVEYOR
DOUGLAS COUNTY, ORE.

Corner Designation

1/4 CORNER (South)
TO SECTIONS 29 & 32

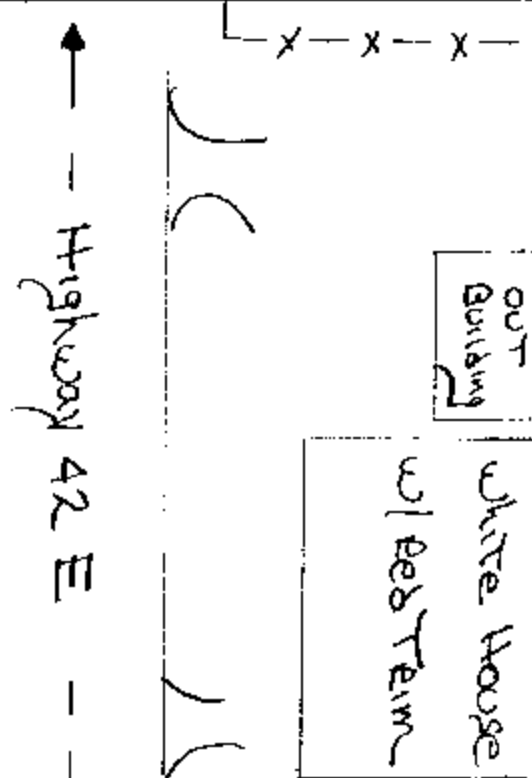
- Condition Report Only
- Not Found
- Renewed
- Unrecorded
- Surveyed In
- Referenced Out

Previous Renewals/Surveys, etc. Renewed by G.G. Steward 1922,
County Renewal # 19, and by John Powell 1970, Renewal
212. County Survey File # 54/113.

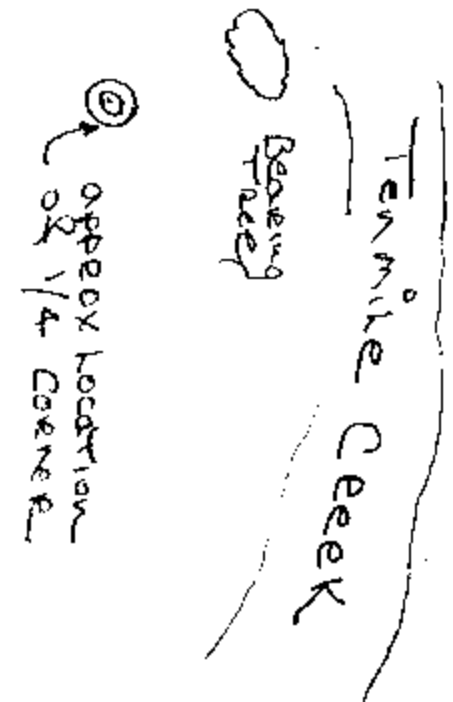
Monument(s) & Accessories Found: (Condition and Source)

Found 1/2" iron pipe in fair and stable condition.
also found 12" oak with tag marked N 43° W, 50.2',
set by Powell in 1970. Tag mentioned in County Surveyors
Record was a 12" maple, this is erroneous.

Monument Detail



Sketch



Monument Set (Procedures and Description)

New Accessories

Location & Comments

1/2" iron pipe was in Compass Declination _____
fairly good condition. Firm/Agency O.D.O.T
There was a slight lean
to the pipe, but it Address 1038 W Howard
was stable. App Roseburg, Oregon 97470
approx 1/2" above Party Chief P. Small
ground line Notes _____
 Witness _____

Surveyor's Seal

REGISTERED
PROFESSIONAL
LAND SURVEYOR

Martin G. Havig

OREGON
SEPT. 23, 1977
MARTIN G. HAVIG
1212