

58-163-4

SURVEY TO ESTABLISH E 1/16 CORNER BETWEEN SECTIONS 17-20  
T 25 S R 3 W W.M.

FOR: SUN STUDS INC.

BY: BURTON W. HOLT P.O.BX. 1127 ROSEBURG, OR. 97470

SCALE: 1" = 400'

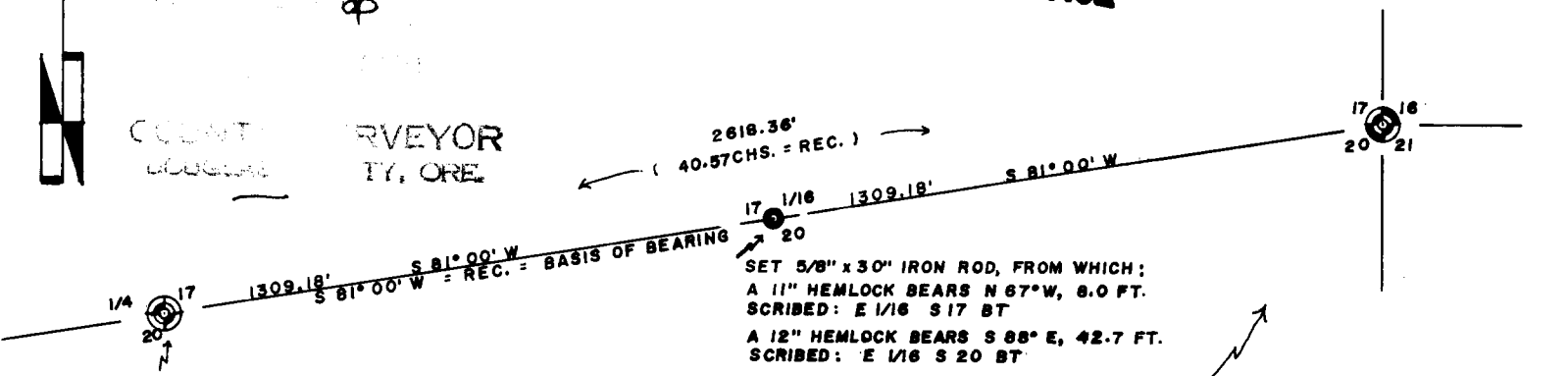
AUG. 1980

**COUNTY SURVEYORS FILE DATA  
DO NOT REMOVE FROM OFFICE**

FILE

RECORD

COUNTY SURVEYOR  
CLATSOP COUNTY, ORE



SET 5/8" x 30" IRON ROD, FROM WHICH:  
A 11" HEMLOCK BEARS N 67° W, 8.0 FT.  
SCRIBED: E 1/16 S 17 BT  
A 12" HEMLOCK BEARS S 88° E, 42.7 FT.  
SCRIBED: E 1/16 S 20 BT

FOUND—1" iron pipe with brass cap marked:  
1/4 17-20 T 25 S R 3 W  
GLO 1944, from which:  
a 6" (now 8") doug. fir bears N 55° E, 23.1'  
shows good healed blaze  
a 11" (now 14") fir bears S 28° E, 36.5'  
this tree now a snag with healed-over blaze  
a 23" fir bears N 87 1/2° W, 70.0'

FOUND—1 1/2" iron pipe with brass cap marked:  
16-17-20-21 T 25 S R 3 W  
GLO 1948, from which:  
a 50" fir stump (obt) bears N 29° E, 23.1'  
scribing visible.  
a 40" fir (now 50" stump-obt) bears  
S 68° E 15.8' no scribing.  
a 16" hem. (now rotted stump-obt)  
bears S 29 1/2° W 11.9' scribe visible.  
a 6" fir (now 12") bears S 35° W 15.3'  
shows good scar.  
a 5" chin. (now down) bears S 76° E 9.6'  
shows "S 21 BT"

**REGISTERED  
PROFESSIONAL  
LAND SURVEYOR**

*Burton W. Holt*

**OREGON  
OCTOBER 4, 1957  
BURTON W. HOLT  
418**

SURVEY NARRATIVE

PROCEDURE: Found the 1/4 corner between 17 & 20, and the section corner common to 16, 17, 20, 21. Looped a traverse through these corners, and determined the distances necessary to set the 1/16 corner by single proportionate measurement.

EQUIPMENT: This survey was executed with a Lietz TM6 Theodolite, a Lietz Red-1 EDM and a H-P Computer.

All bearings are based on the bearing of the North line of Section 20 as determined by the General Land Office Survey of 1944.

58/163-4