

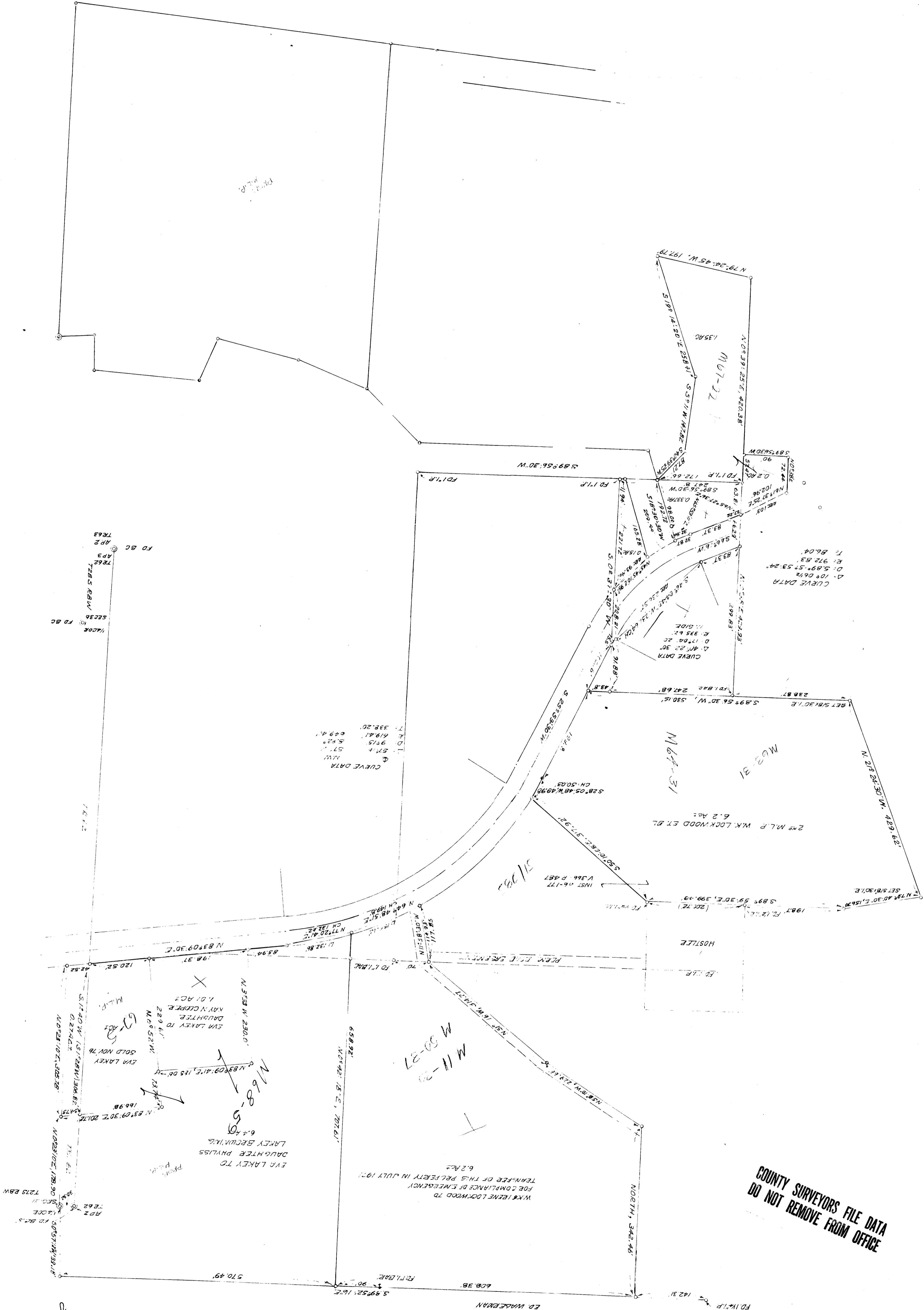
Survey in Progress - Copy only filed
T. 28 S. R. 8 W. Sec 36
Laney Survey - Copy only filed

(Survey in Progress - Copy only filed)
T. 28 S. R. 8 W. Sec 36

FILED
RECEIVED
DEC 30 1977

COUNTY SURVEYOR
DOUGLAS COUNTY, ORE.

COUNTY SURVEYORS FILE DATA
DO NOT REMOVE FROM OFFICE



COUNTY SURVEYORS FILE DATA
DO NOT REMOVE FROM OFFICE

FILED
RECEIVED
DEC 30 1977
COUNTY SURVEYOR
DOUGLAS COUNTY, ORE.