

SURVEY TO SET PROPERTY CORNER FOR ROBERT LINDER

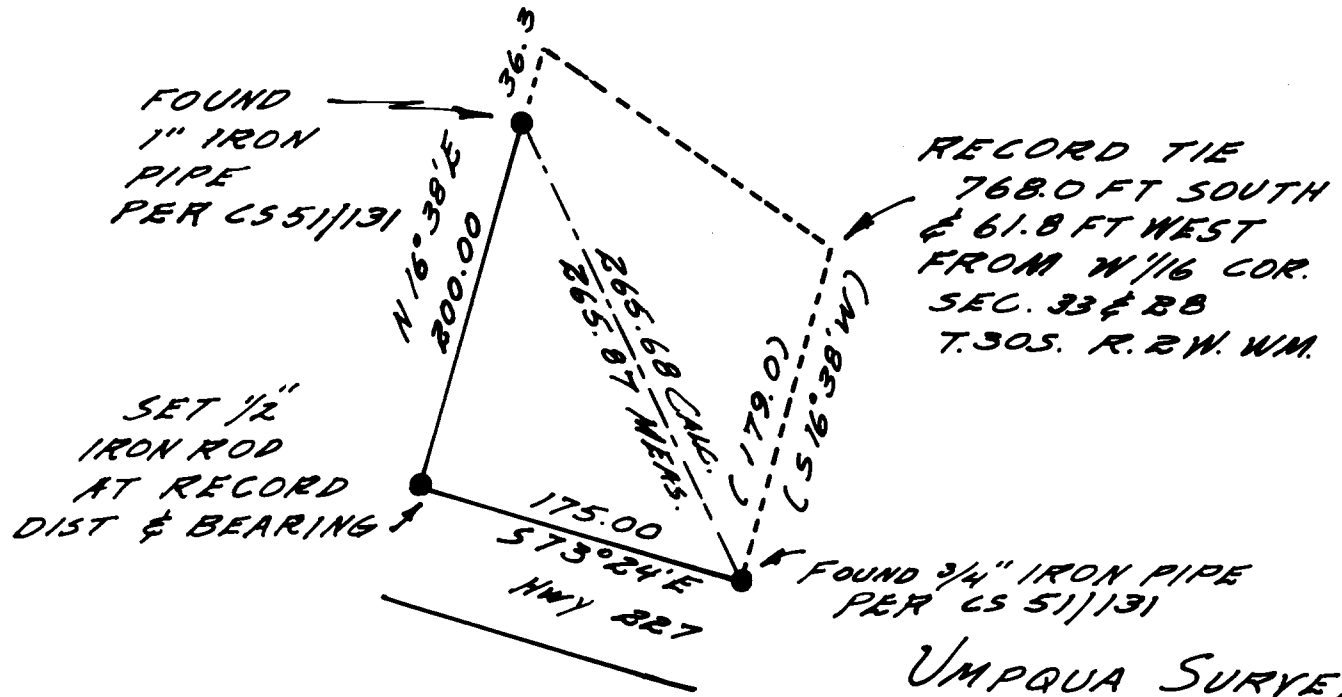
IN SECTION 33 T.30S. R.2W. W.M.
INST # 70-5021

FILED *d*
RECEIVED *w*

JUL 17 1978

COUNTY SURVEYOR
DOUGLAS COUNTY, ORE.
TB

**COUNTY SURVEYORS FILE DATA
DO NOT REMOVE FROM OFFICE.**



APPROVED
COUNTY SURVEYOR

William J. ...

WILLIAM J. ...
S.E.

UMPQUA SURVEYING Co.
MYRTLE CREEK OR.
JULY 1978