

SURVEY FOR DEED DESCRIPTION

FILED  
RECEIVED

For Robert L. Pickell

APR 11 1978

In T.30 S., R.5 W., W.M.; Sec 21

COUNTY SURVEY  
DOUGLAS COUNTY, OR

March 29, 1978 Scale: 1" = 20'

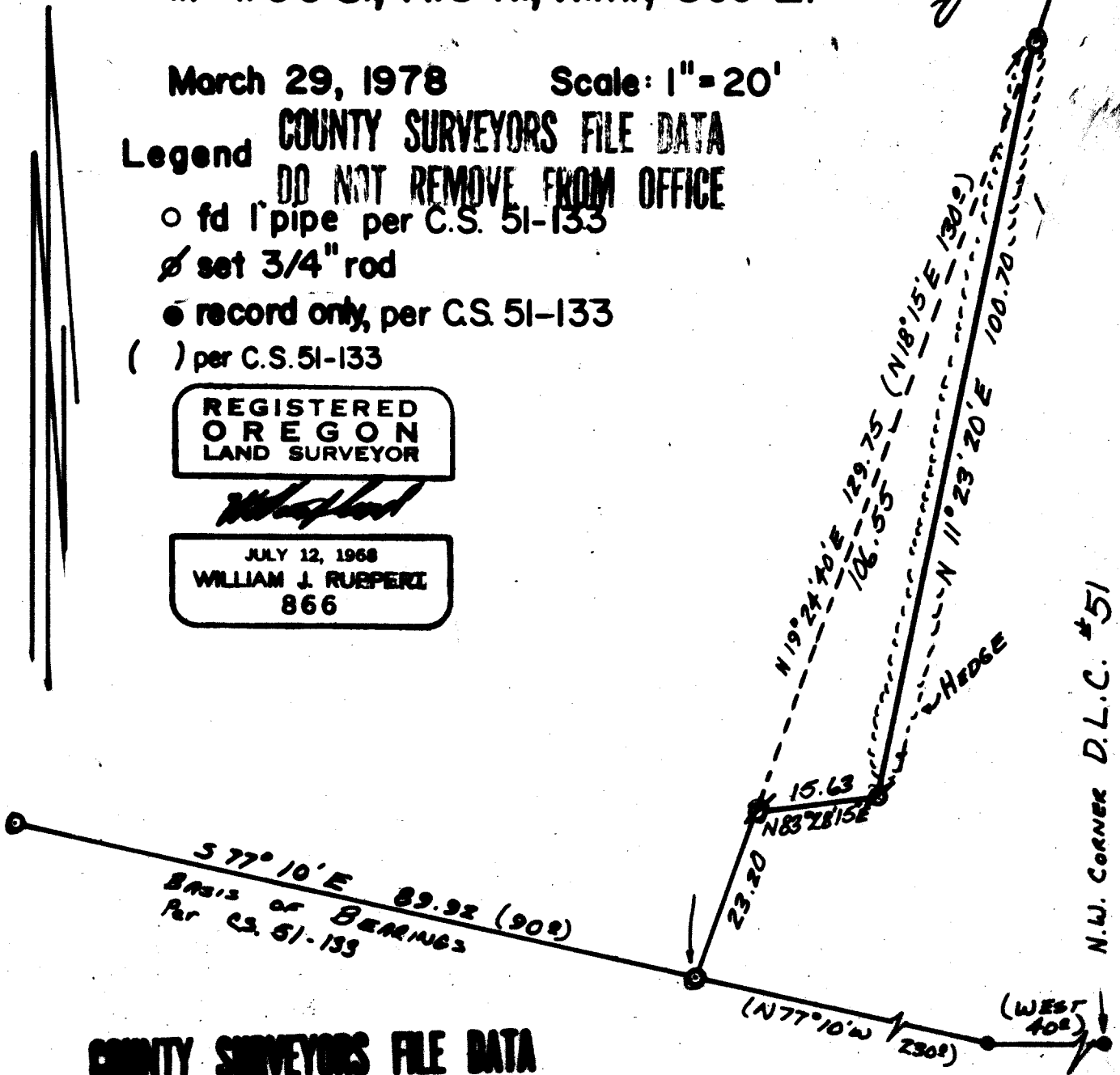
Legend COUNTY SURVEYORS FILE DATA  
DO NOT REMOVE FROM OFFICE

- fd pipe per C.S. 51-133
- ∅ set 3/4" rod
- record only, per C.S. 51-133
- ( ) per C.S. 51-133

REGISTERED  
OREGON  
LAND SURVEYOR

*William J. Rurperi*

JULY 12, 1968  
WILLIAM J. RURPERI  
866



COUNTY SURVEYORS FILE DATA  
DO NOT REMOVE FROM OFFICE

UMPQUA SURVEYING COMPANY