

COUNTY SURVEYORS FILE DATA
DO NOT REMOVE FROM OFFICE

SURVEY TO SET PROPERTY CORNER
IN SECTION 12, T. 27S, R. 6 W. N. M.

FOR GEORGINA PAYNE
BY BRUCE ROGERS

NOV. 1978

1" = 50'

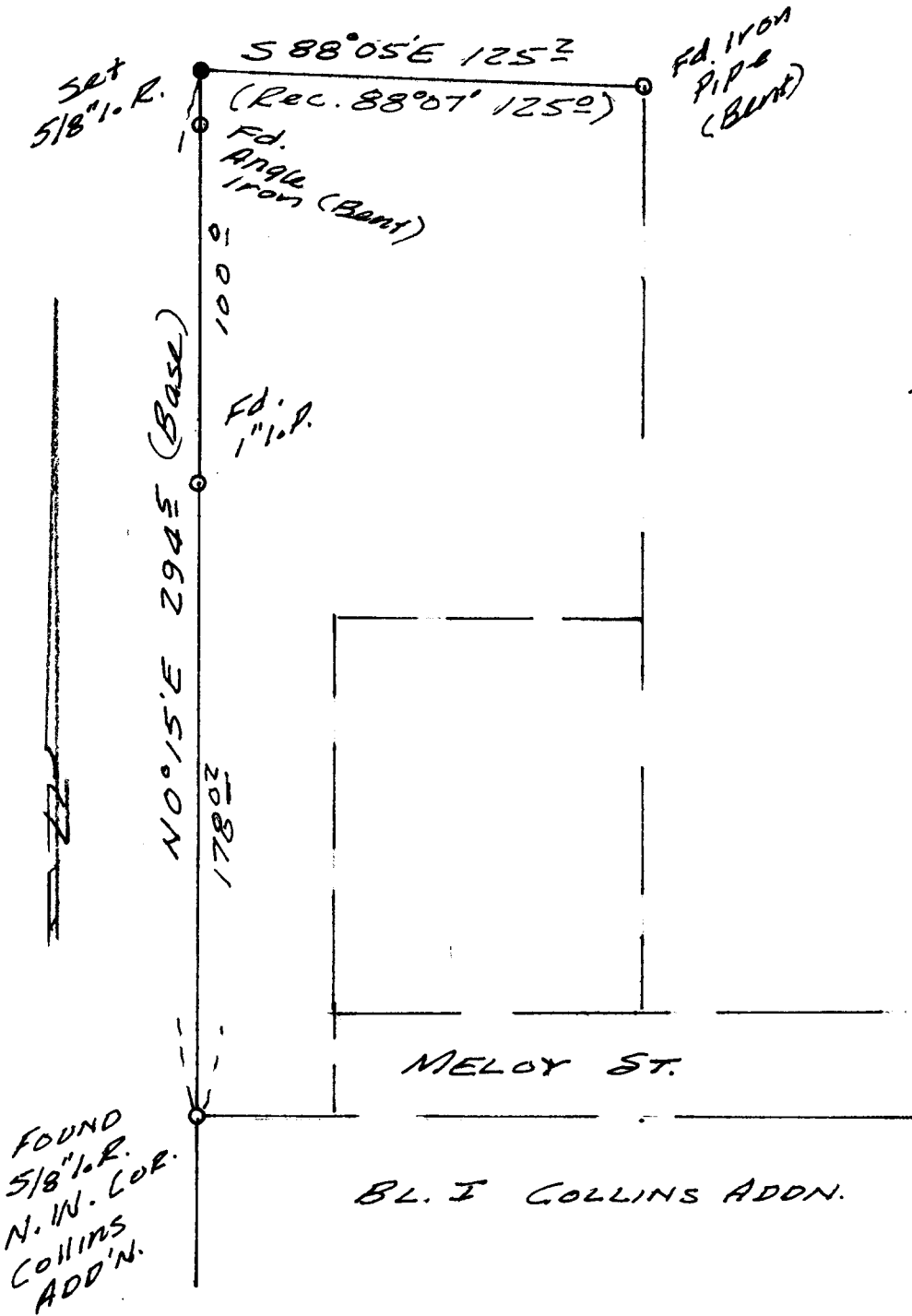
Based on C.S. 55/82

FILED *JR*
RECEIVED *JR*

NOV 13 1978

COUNTY SURVEYOR
JONAS COUNTY, ORE.

JR



REGISTERED
SURVEYOR
JONAS COUNTY, ORE.

Bruce R. Rogers

JULY 30, 1964
BRUCE R. ROGERS
660