

9-551/85

ON FILE

COUNTY SURVEYORS FILE DATA

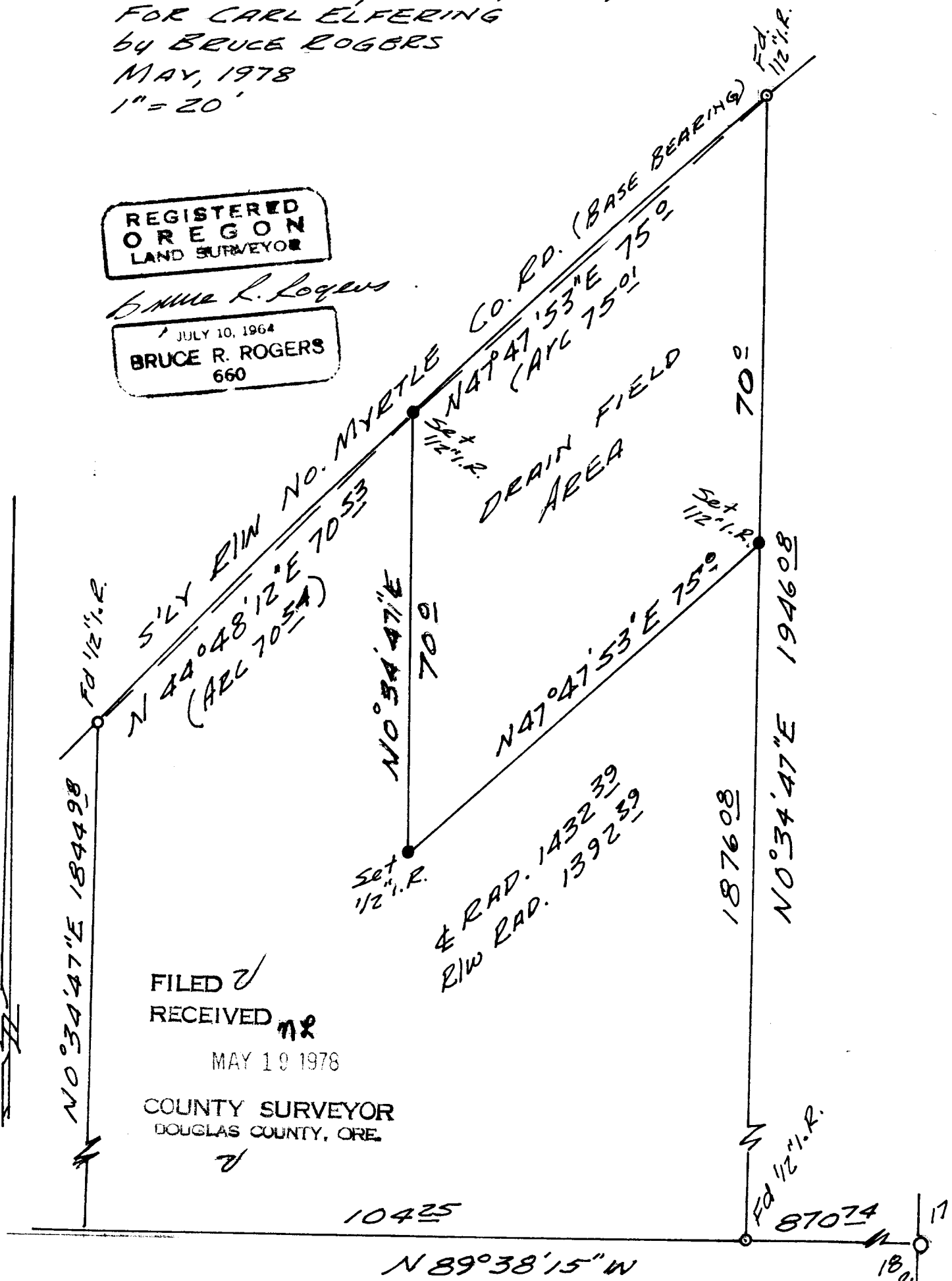
DO NOT REMOVE FROM OFFICE

SURVEY FOR DEED DESCRIPTION
IN THE N.E. 1/4, SEC. 18, T. 28S., R. 3 W. W.M.
FOR CARL ELFERING
BY BRUCE ROGERS
MAY, 1978
1" = 20'

REGISTERED
OREGON
LAND SURVEYOR

Bruce R. Rogers

JULY 10, 1964
BRUCE R. ROGERS
660



FILED ✓
RECEIVED
MAY 19 1978

COUNTY SURVEYOR
DOUGLAS COUNTY, ORE.