

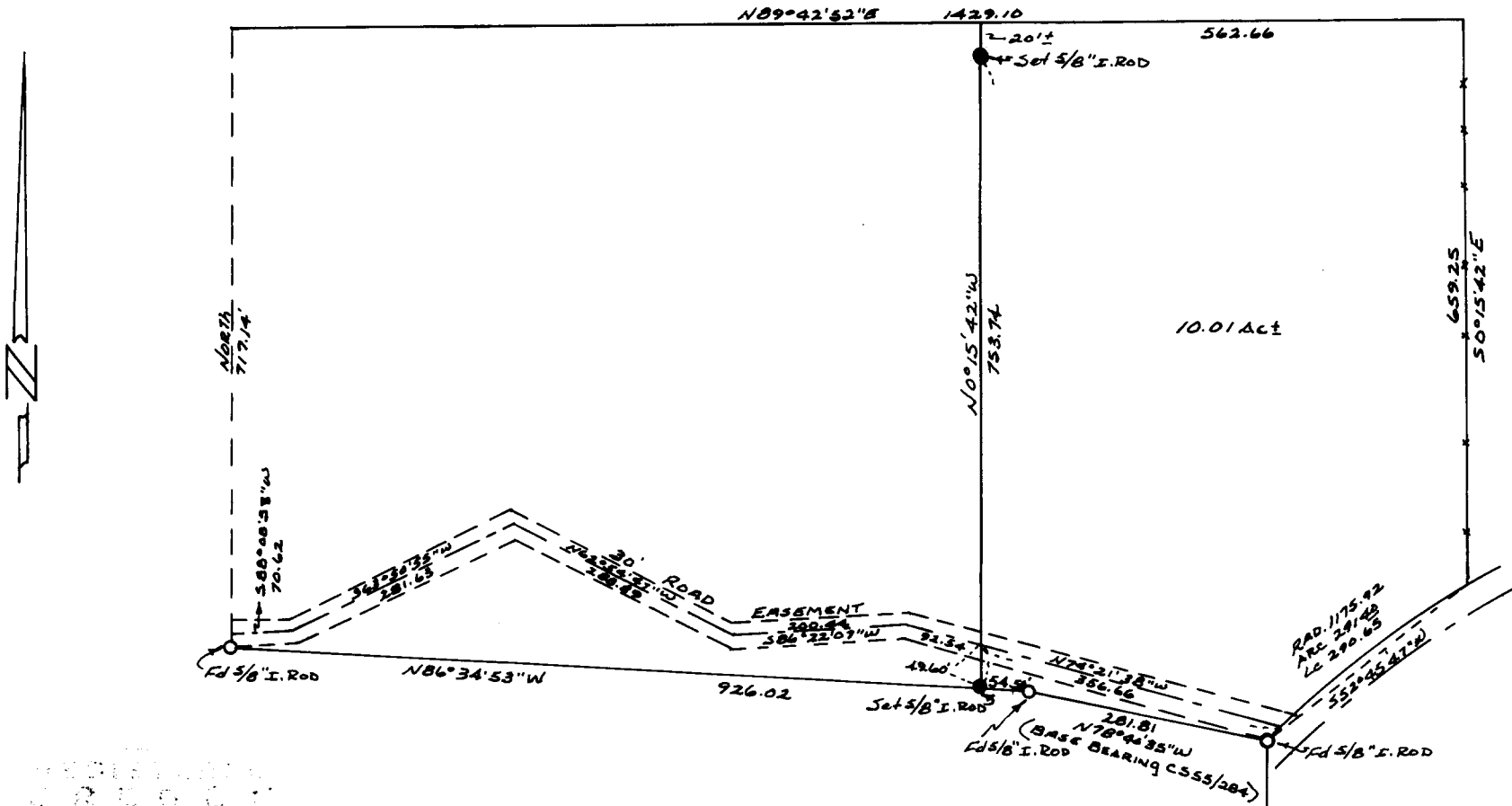
SURVEY FOR DEED DESCRIPTION
 IN SEC. 36, T. 265., R. 4 W. W. M
 & SEC. 31, T. 265. R. 3. W. W. M.
 SURVEYED FOR PAT PYLE
 BY BRUCE ROGERS
 DEC. 1977, 1" = 200'

FILED ✓
 RECEIVED ✓

DEC 19 1977

COUNTY SURVEYOR
 DOUGLAS COUNTY, ORE.

✓



REGISTERED
 SURVEYOR
 DOUGLAS COUNTY, ORE.

Bruce R. Rogers

JULY 10, 1964
 BRUCE R. ROGERS
 660

COUNTY SURVEYORS FILE DATA
 DO NOT REMOVE FROM OFFICE

⊙ EAST
 142.02
 SW Corner Sec 31
 T. 265, R. 3 W, W. M.
 (TIE PER C555/204)

C. S. File No. 53/155-2