

SURVEY FOR SELMAR HUTCHINS

IN LOTS 2 & 3, PLAT "E" UMPQUA PARK FRUIT LANDS

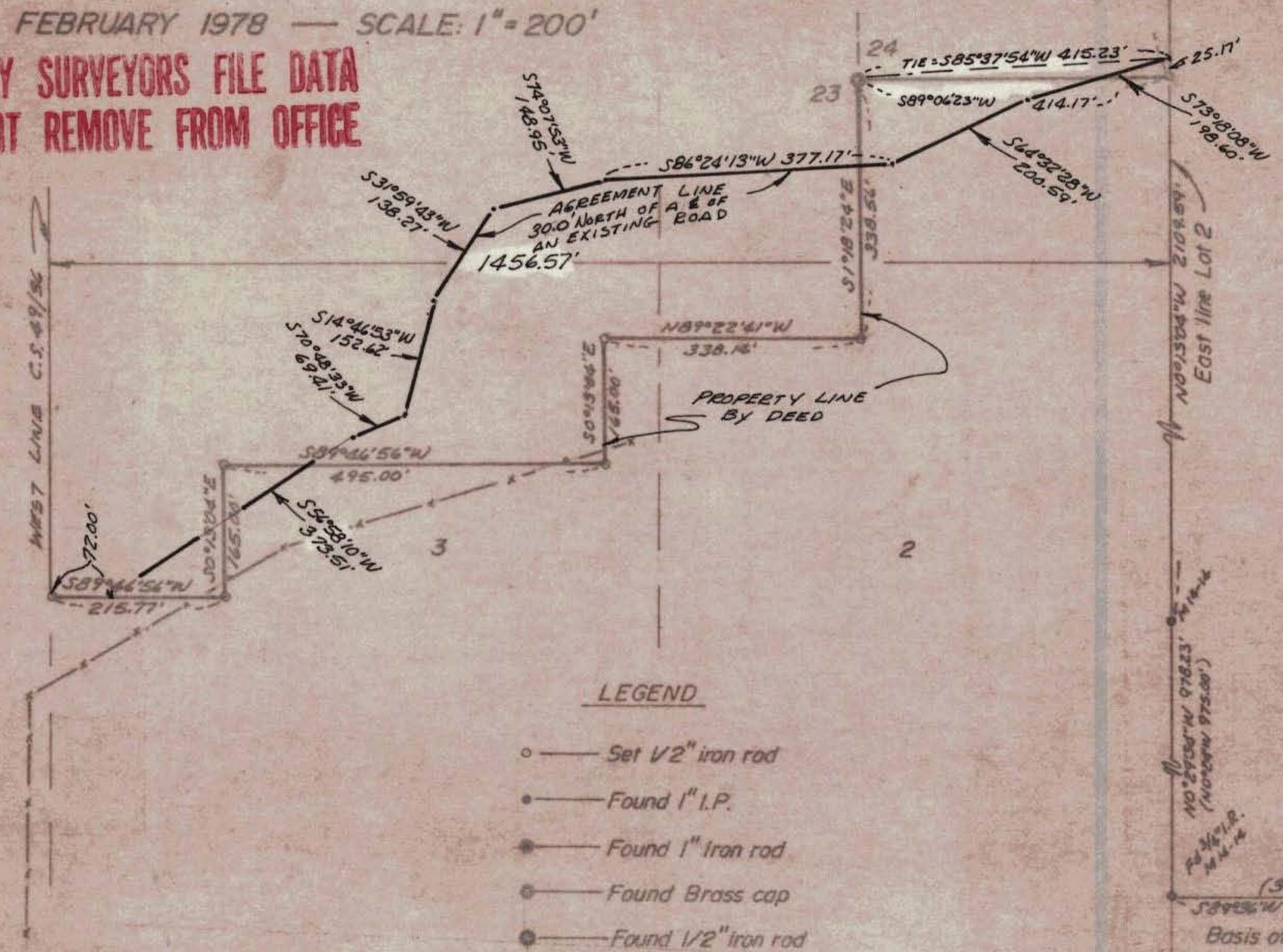
SECTIONS 23 & 24, T.27S. R.6W.W.M.

BY: BAUGHMAN TECHNICAL SERVICES INC.

FEBRUARY 1978 — SCALE: 1" = 200'

**COUNTY SURVEYORS FILE DATA
DO NOT REMOVE FROM OFFICE**

FILED ✓
RECEIVED ✓
FEB 17 1978
COUNTY SURVEYOR
DOUGLAS COUNTY, ORE.
✓



LEGEND

- — Set 1/2" iron rod
- — Found 1" I.P.
- — Found 1" Iron rod
- — Found Brass cap
- — Found 1/2" iron rod

REGISTERED
PROFESSIONAL
LAND SURVEYOR

Glenn S. Baughman
OREGON
JULY 14, 1961
GLENN S. BAUGHMAN
536

REVISED 2/13/78 Eab

G. S. File No. 58/153-5

FM 4-17