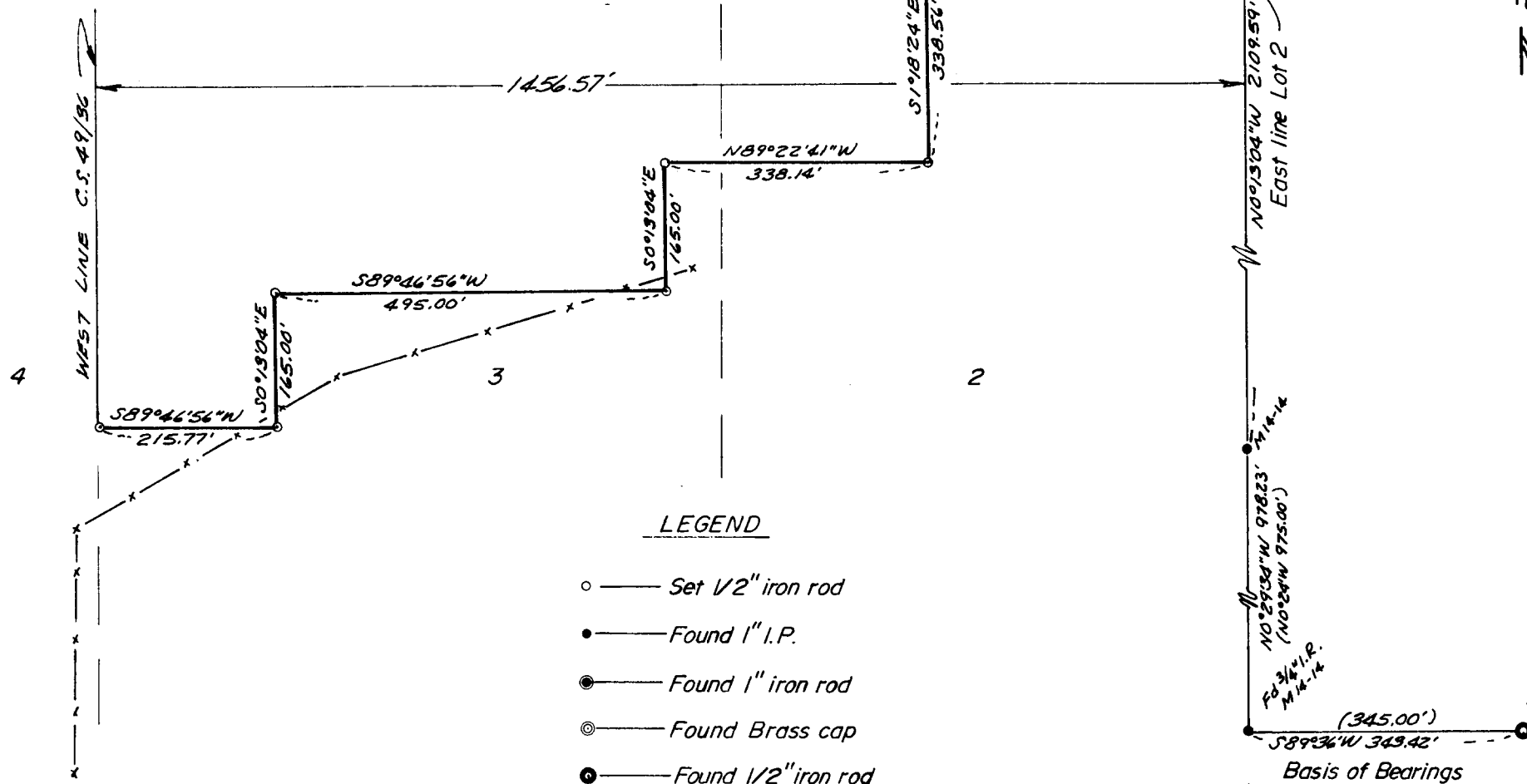


SURVEY FOR SELMAR HUTCHINS

IN LOTS 2 & 3, PLAT "E" UMPQUA PARK FRUIT LANDS
 SECTIONS 23 & 24, T.27S. R.6W.W.M.
 BY: BAUGHMAN TECHNICAL SERVICES INC.

FEBRUARY 1978 — SCALE: 1" = 200'

**COUNTY SURVEYORS FILE DATA
 DO NOT REMOVE FROM OFFICE**



LEGEND

- — Set 1/2" iron rod
- — Found 1" I.P.
- ⊙ — Found 1" iron rod
- ⊗ — Found Brass cap
- ⦿ — Found 1/2" iron rod

FILED *d*
 RECEIVED *z/h*

FEB 7 1978

COUNTY SURVEYOR
 DOUGLAS COUNTY, ORE.

Based on M/14-14

REGISTERED
 PROFESSIONAL
 LAND SURVEYOR

Glenn S. Baughman
 OREGON
 JULY 12, 1961
 GLENN S. BAUGHMAN
 536