

SURVEY FOR EASEMENT LOCATION

IN SECTION 18, T.26S.R.3W.W.M.

FOR: STEVE DUNCAN

BY: C & G ENGINEERING INC.

OCTOBER 1977 - SCALE: 1"=100'

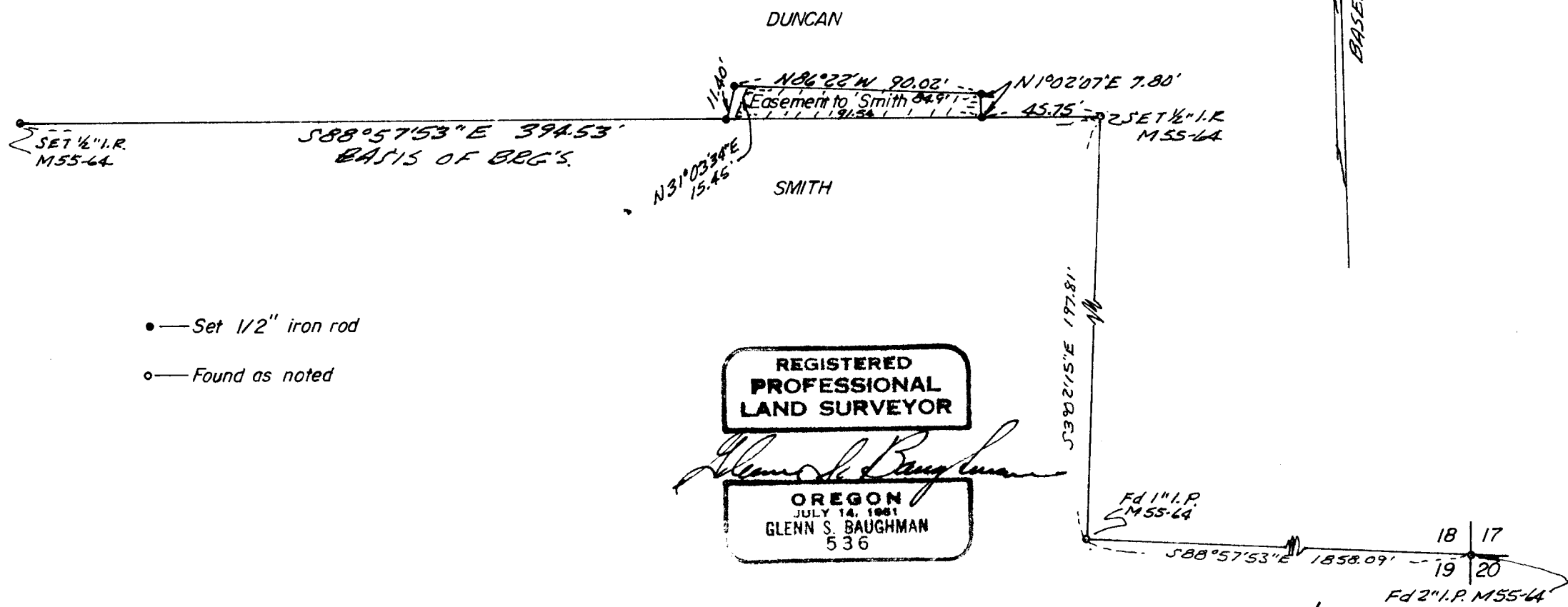
COUNTY SURVEYORS FILE DATA
DO NOT REMOVE FROM OFFICE

FILED ✓
RECEIVED ✓

COUNTY SURVEYOR
DOUGLAS COUNTY, ORE.

✓

BASED ON M55-64



- — Set 1/2" iron rod
- — Found as noted

REGISTERED
PROFESSIONAL
LAND SURVEYOR

Glenn S. Baughman

OREGON
JULY 14, 1961
GLENN S. BAUGHMAN
536

Fd 1" I.P.
M55-64

18 | 17
19 | 20
Fd 2" I.P. M55-64