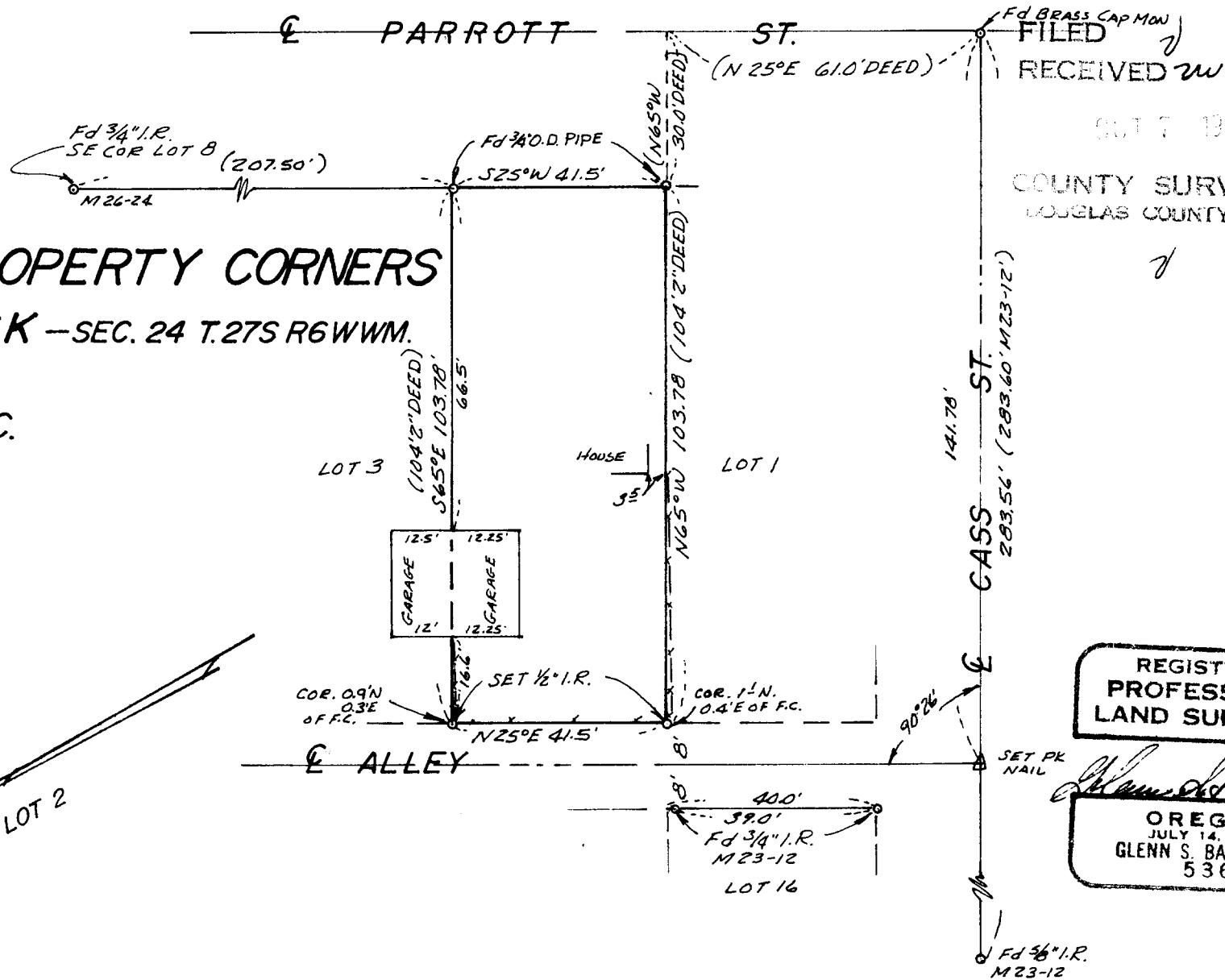


COUNTY SURVEYORS FILE DATA
DO NOT REMOVE FROM OFFICE

**SURVEY TO SET PROPERTY CORNERS
IN LOT 2 MOFFITT BLOCK - SEC. 24 T.27S R6WWM.
FOR: DELMAR CROW
BY: C & G ENGINEERING INC.**

OCTOBER 1977 SCALE: 1" = 30'



FILED
RECEIVED W
OCT 7 1977
COUNTY SURVEYOR
DEUELAS COUNTY, ORE.

REGISTERED
PROFESSIONAL
LAND SURVEYOR

Glenn S. Baughman
OREGON
JULY 14, 1961
GLENN S. BAUGHMAN
536

6140.0000(79)

3. 58/163-1