

FILED ✓
RECEIVED ✓

Prepared for

AUG 29 1977

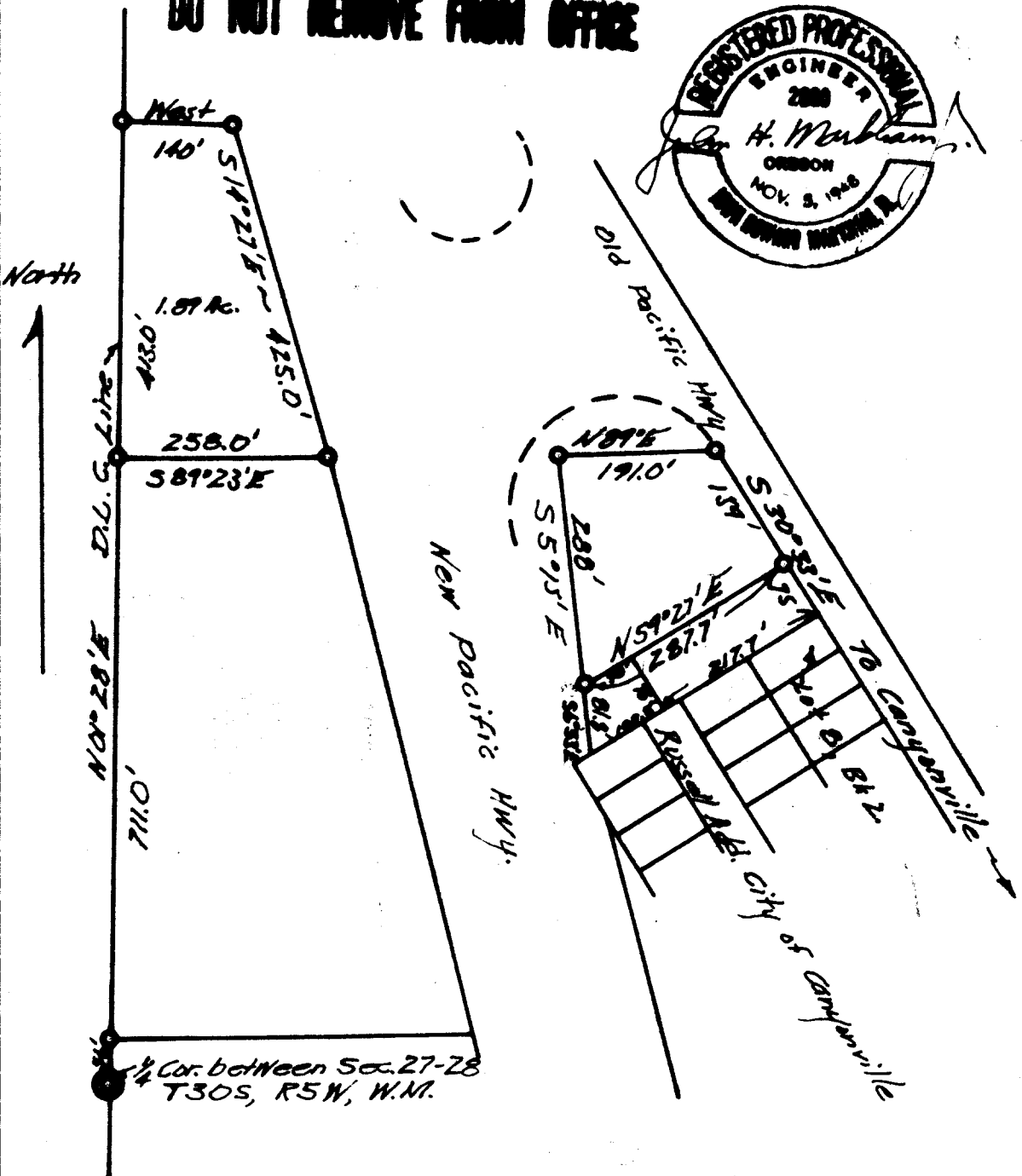
~ D. E. BROWN ~

COUNTY SURVEYOR
DOUGLAS COUNTY, ORE.

SW NW
Portion of Sec. 27, T30S, R5W, W.M. 1

Scale 1" = 200' Jan. 1952

COUNTY SURVEYORS FILE DATA
DO NOT REMOVE FROM OFFICE



1/4 Cor. between Sec. 27-28
T30S, R5W, W.M. 1

C.S. FILE NO. 58/1512