

COUNTY SURVEYORS FILE DATA
DO NOT REMOVE FROM OFFICE

Prepared for

T. L. Bronson

Scale 1" = 100' March 1955

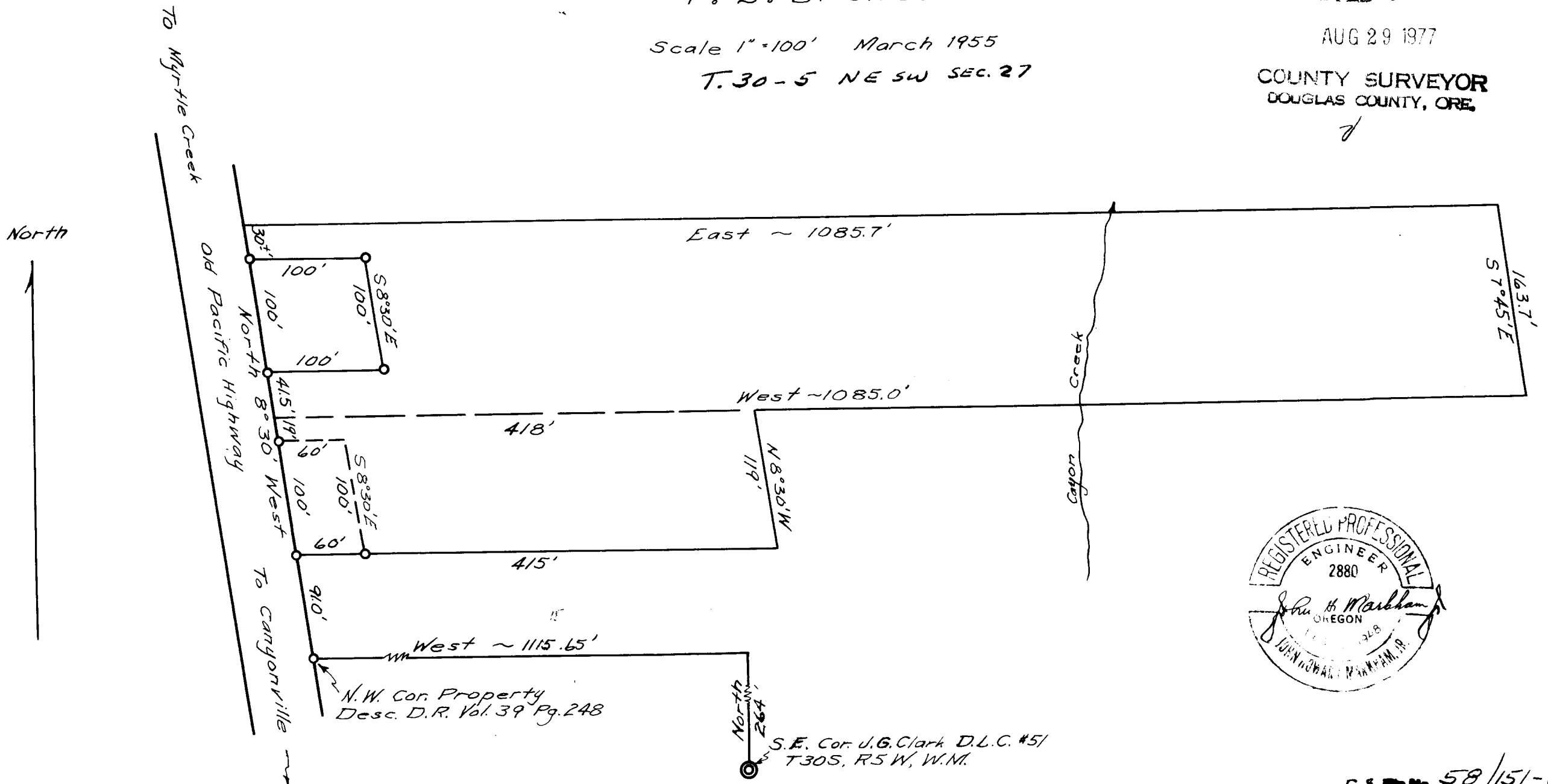
T. 30 - 5 NE SW SEC. 27

FILED ✓
 RECEIVED ✓

AUG 29 1977

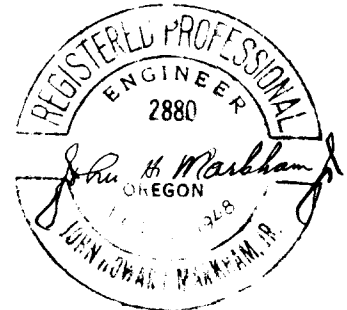
COUNTY SURVEYOR
 DOUGLAS COUNTY, ORE.

✓



N.W. Cor. Property
 Desc. D.R. Vol. 39 Pg. 248

S.E. Cor. J.G. Clark D.L.C. #51
 T30S, R5W, W.M.



C.S. File No. 58/151-17