

Prepared for
~ O. Streiberger & J. J. Wright ~

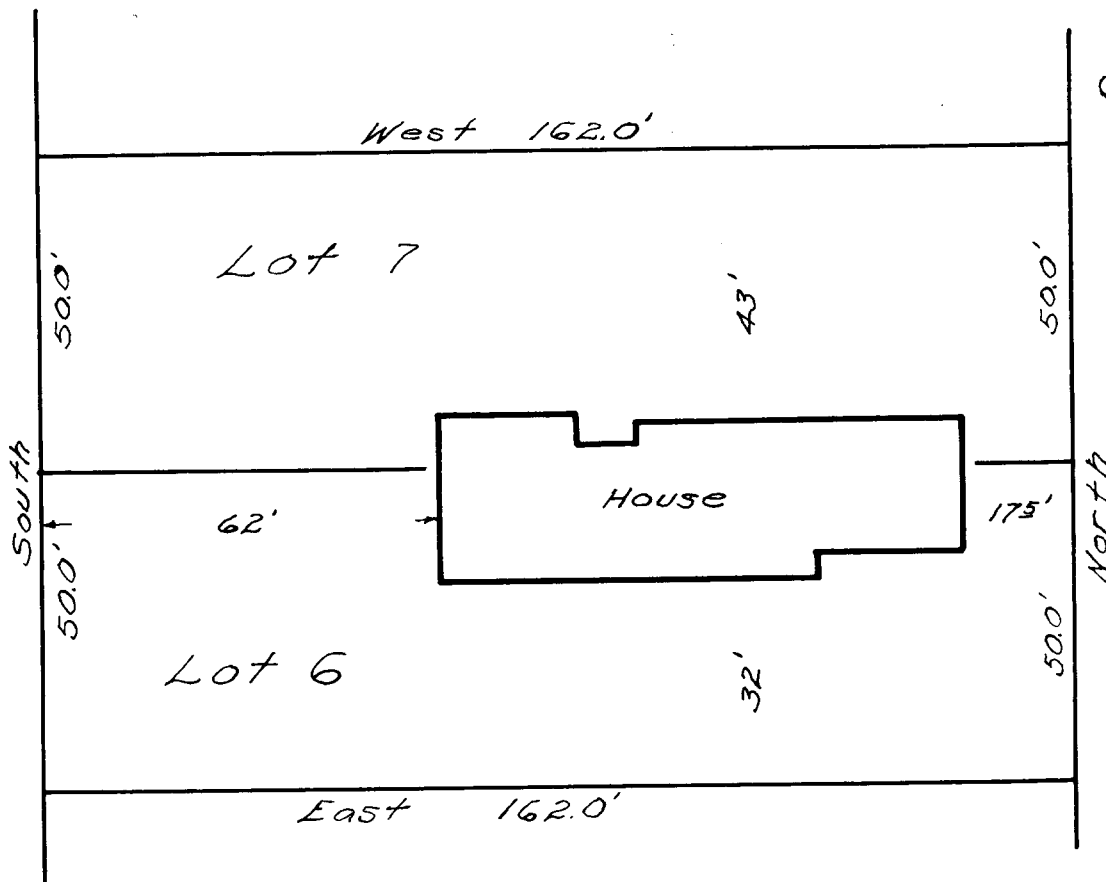
Lots 6 and 7, Amended Plat of Carey Tract in City of Myrtle Cr

COUNTY SURVEYORS FILE DATA
DO NOT REMOVE FROM OFFICE

Scale 1" = 30' April 1956

T. 29-5 SW SW SEC. 22

FILED
RECE



I hereby certify that I have correctly surveyed the above property and the improvements shown and described hereon the property lines.