

Prepared for

~ BUD GROOM ~

showing

Lot 31, Christian Tract, City of Myrtle Creek, Douglas Co. Ore

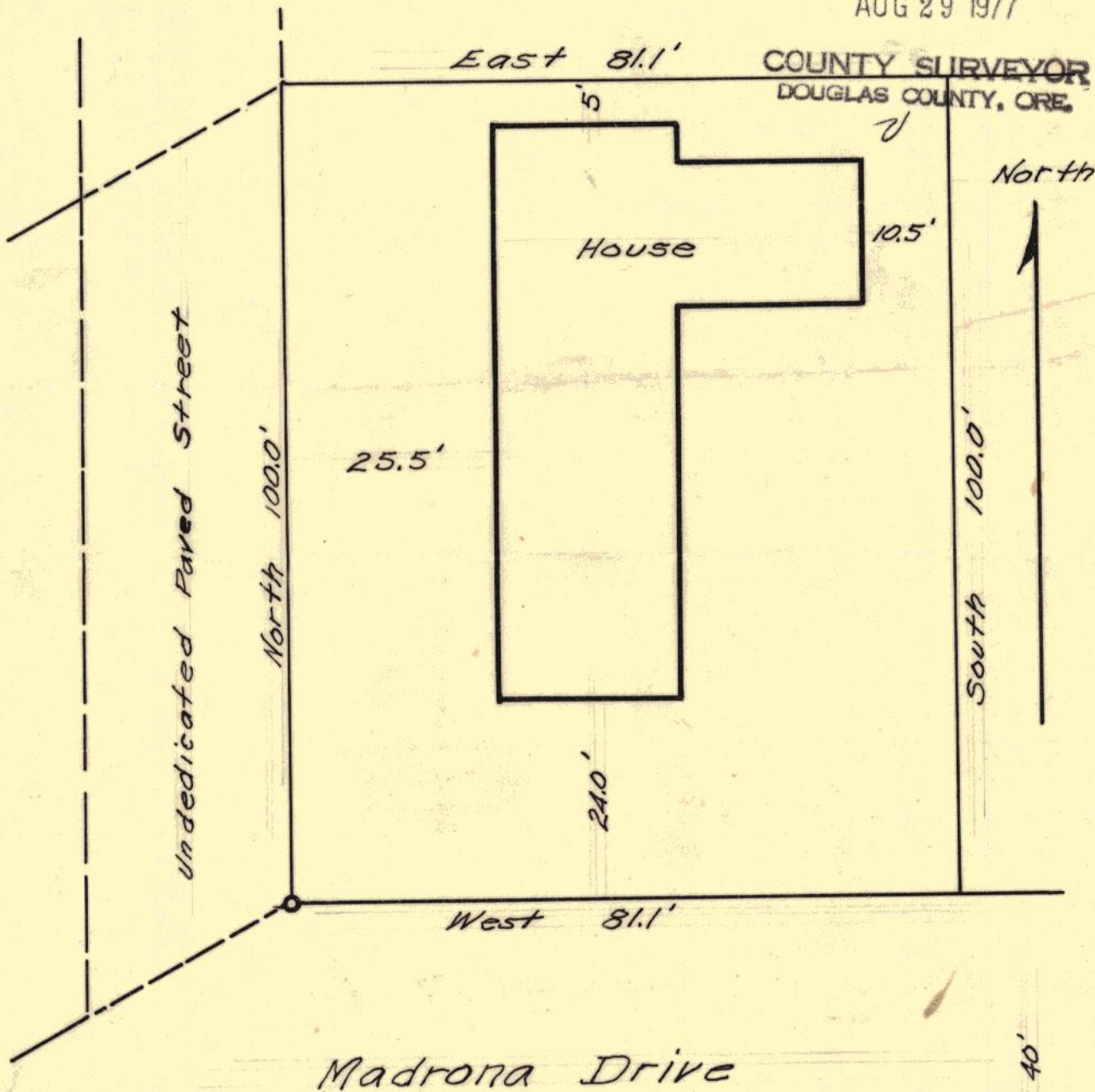
Scale 1" = 20' July 1957

T. 29-5 NW SE SEC. 22

FILED ✓
RECEIVED ✓

AUG 29 1977

COUNTY SURVEYOR
DOUGLAS COUNTY, ORE.



I hereby certify that I have correctly surveyed the above described property and the improvements shown and described hereon are within the property lines.

COUNTY SURVEYORS FILE DATA
DO NOT REMOVE FROM OFFICE



C. S. File No. 58/151-