

COUNTY SURVEYORS FILE DATA  
DO NOT REMOVE FROM OFFICE

Prepared for  
~ J. D. GROOM ~  
Showing

Lots 4 & 5 Morrision Addition to City of Myrtle Creek, Ore.

Scale 1" = 40' May 1956

T. 29-5 NE NW SEC. 27

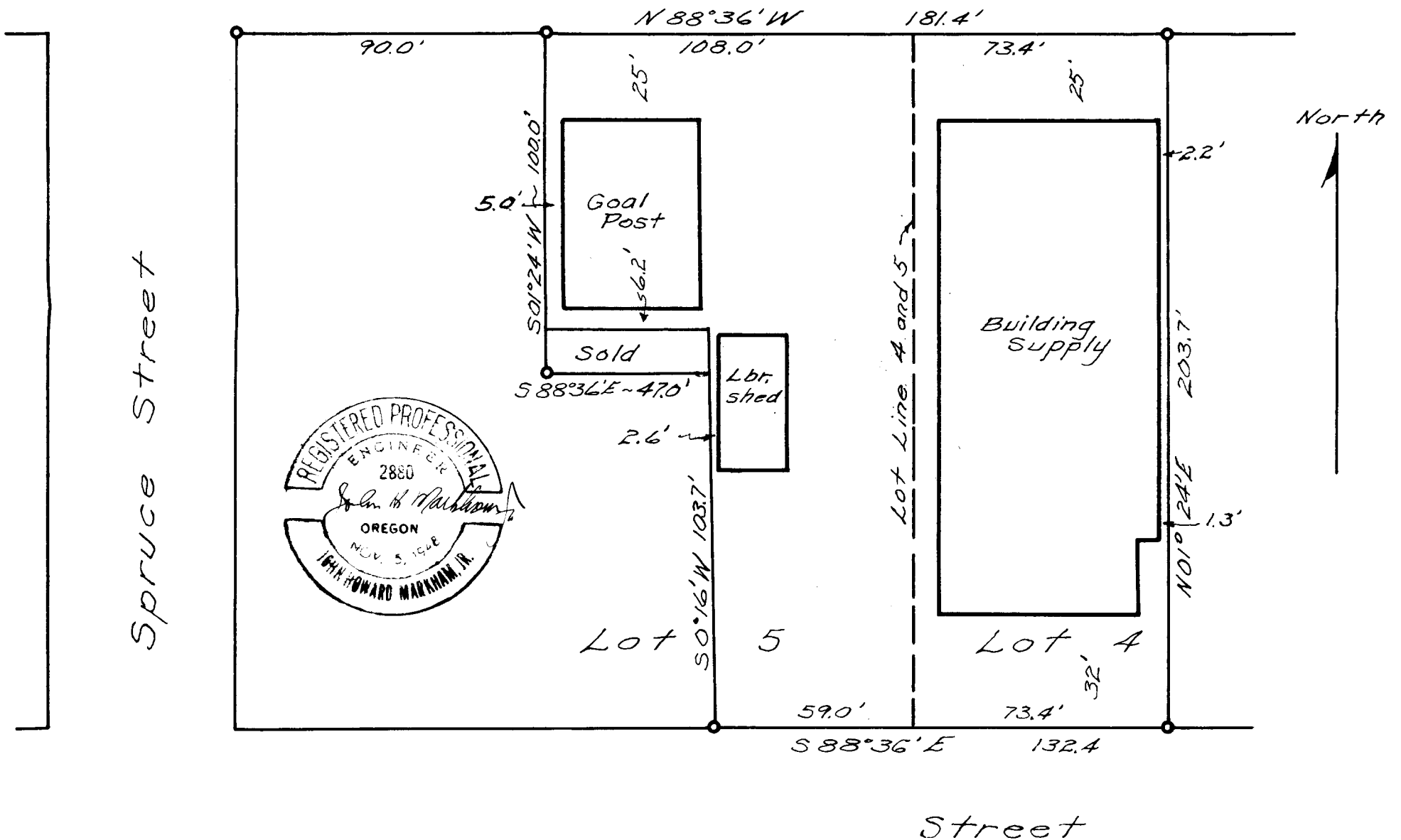
FILED ✓  
RECEIVED ✓h

AUG 29 1977

COUNTY SURVEYOR  
DOUGLAS COUNTY, ORE.

Division Street

✓



I hereby certify that I have correctly surveyed the above described property and the improvements shown and described hereon are within the property lines.

C.S. No. 58/151-1  
John H. Markham