

5-201/85

SURVEY IN SECTION 11, T27S, R6W, W.M.
FOR CECIL HUGH & DARLEY WARE
BY BHW ENG. & SURVEYING
OCT., 1977 SCALE: 1" = 60'

FILED
RECEIVED MLL

NOV 27 1977

COUNTY SURVEYOR
DOUGLAS COUNTY, ORE.

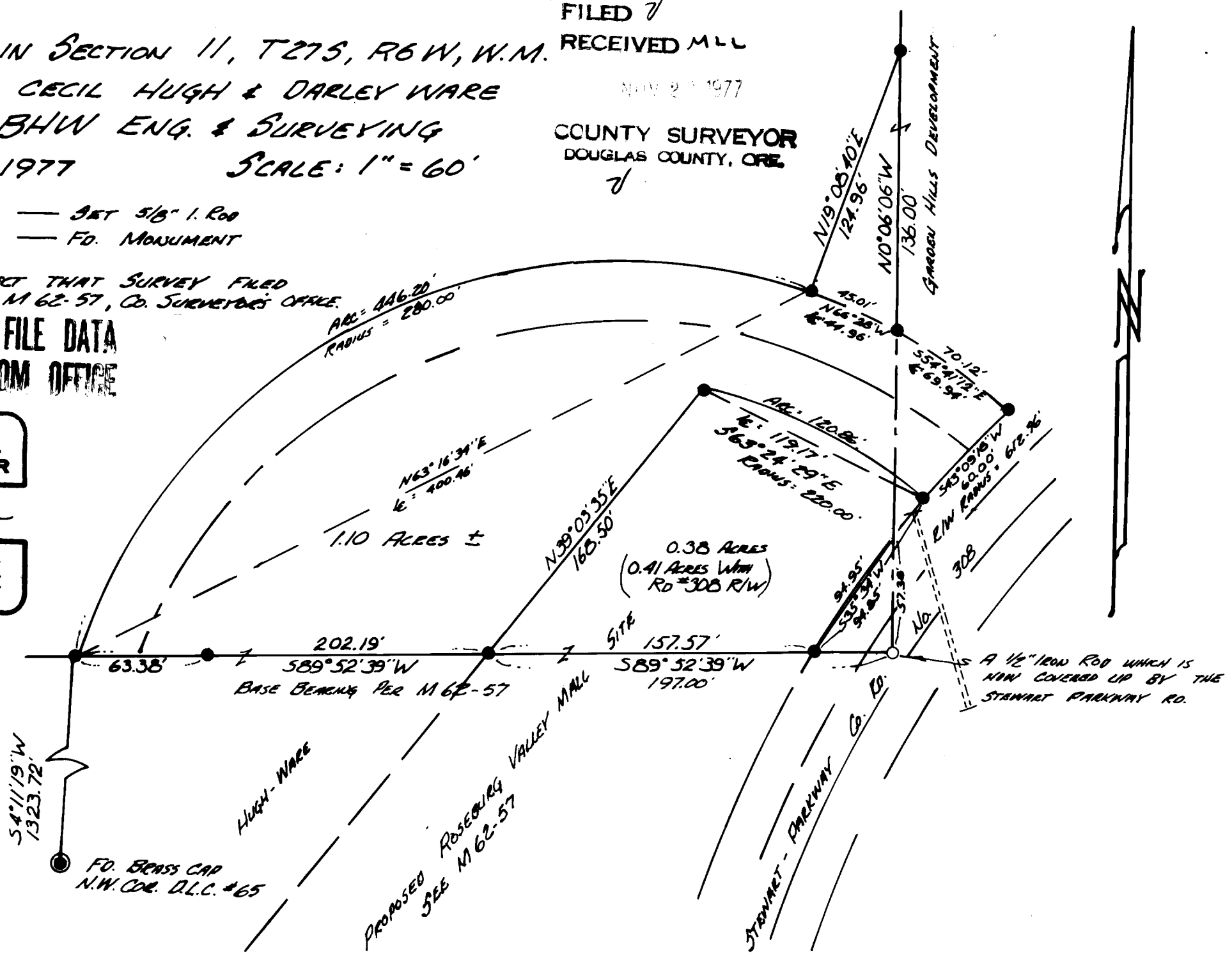
- — SET 5/8" I. ROD
- — FO. MONUMENT

SURVEY TO CORRECT THAT SURVEY FILED
IN SURVEY FILE M 62-57, Co. SURVEYOR'S OFFICE.
COUNTY SURVEYORS FILE DATA
DO NOT REMOVE FROM OFFICE

REGISTERED
PROFESSIONAL
LAND SURVEYOR

Romans E. Ware

OREGON
NOV. 18, 1973
ROMANSO E. WARE
1005



A 1/2" IRON ROD WHICH IS
NOW COVERED UP BY THE
STEWART PARKWAY RD.