

SURVEY IN SEC. 27, T25S, R7W, WM.

For Claude Crane
By BHW Engr. & Surveying, Inc.

FILED ✓
RECEIVED ✓

AUG 8 1977

August 1977

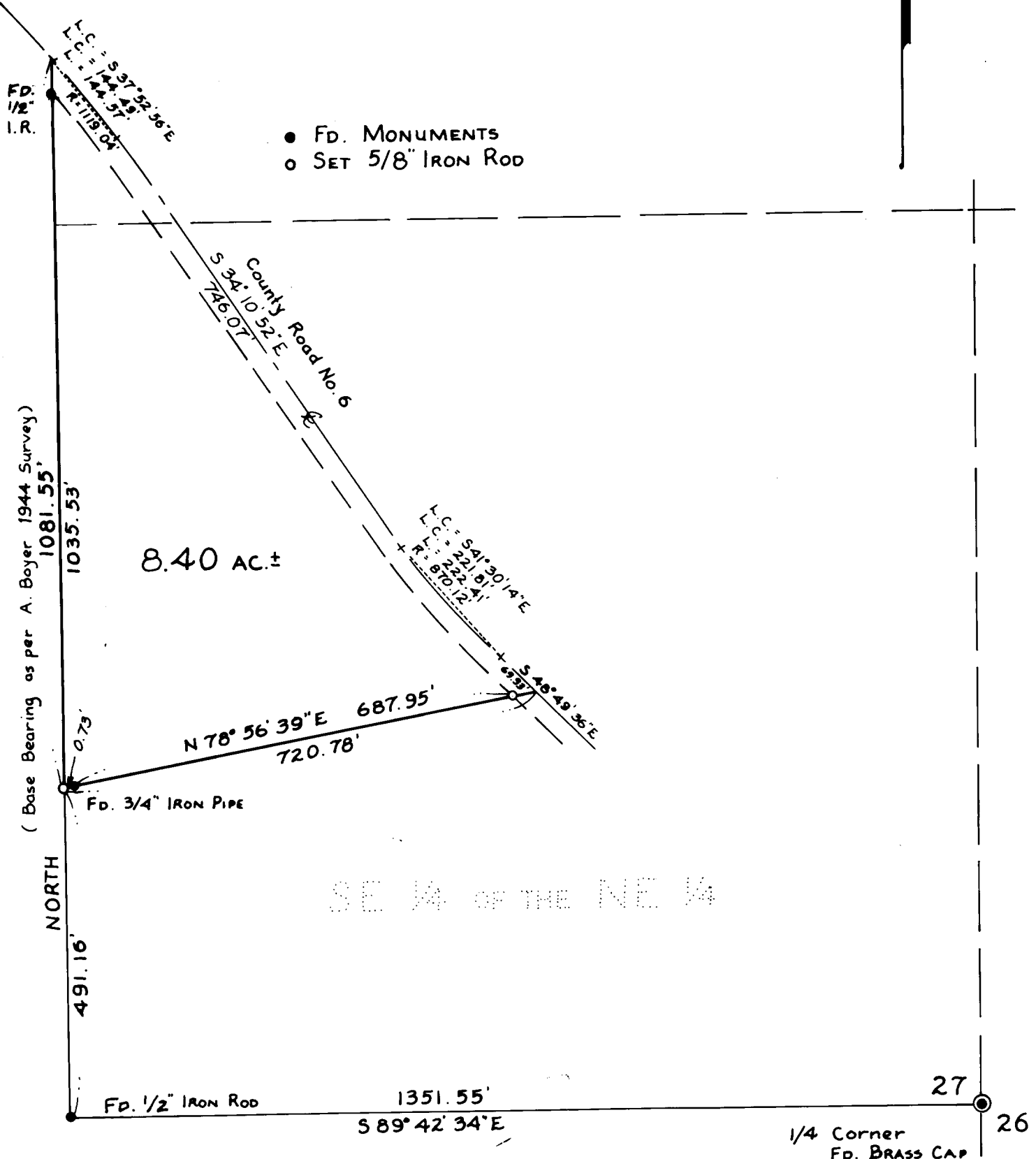
Scale 1" = 200'
COUNTY SURVEYOR
GLAS COUNTY, ORE.
DO NOT REMOVE FROM OFFICE

REGISTERED
PROFESSIONAL
LAND SURVEYOR

Romanso E. Ware

OREGON
NOV. 16, 1973
ROMANSO E. WARE
1005

NOTE:
Survey to correct survey made in
October 1976 (C.S. File 58/124), upon
finding original monument set by
Art Boyer at the southwest corner
of parcel.



SE 1/4 OF THE NE 1/4