

SKETCH OF ROCK ISLAND UNIT

FOR: WEYERHAEUSER CO.

IN SECTION 6, T.25S. R.2W.W.M.

BY: C & G ENGINEERING INC.

SEPTEMBER 1977

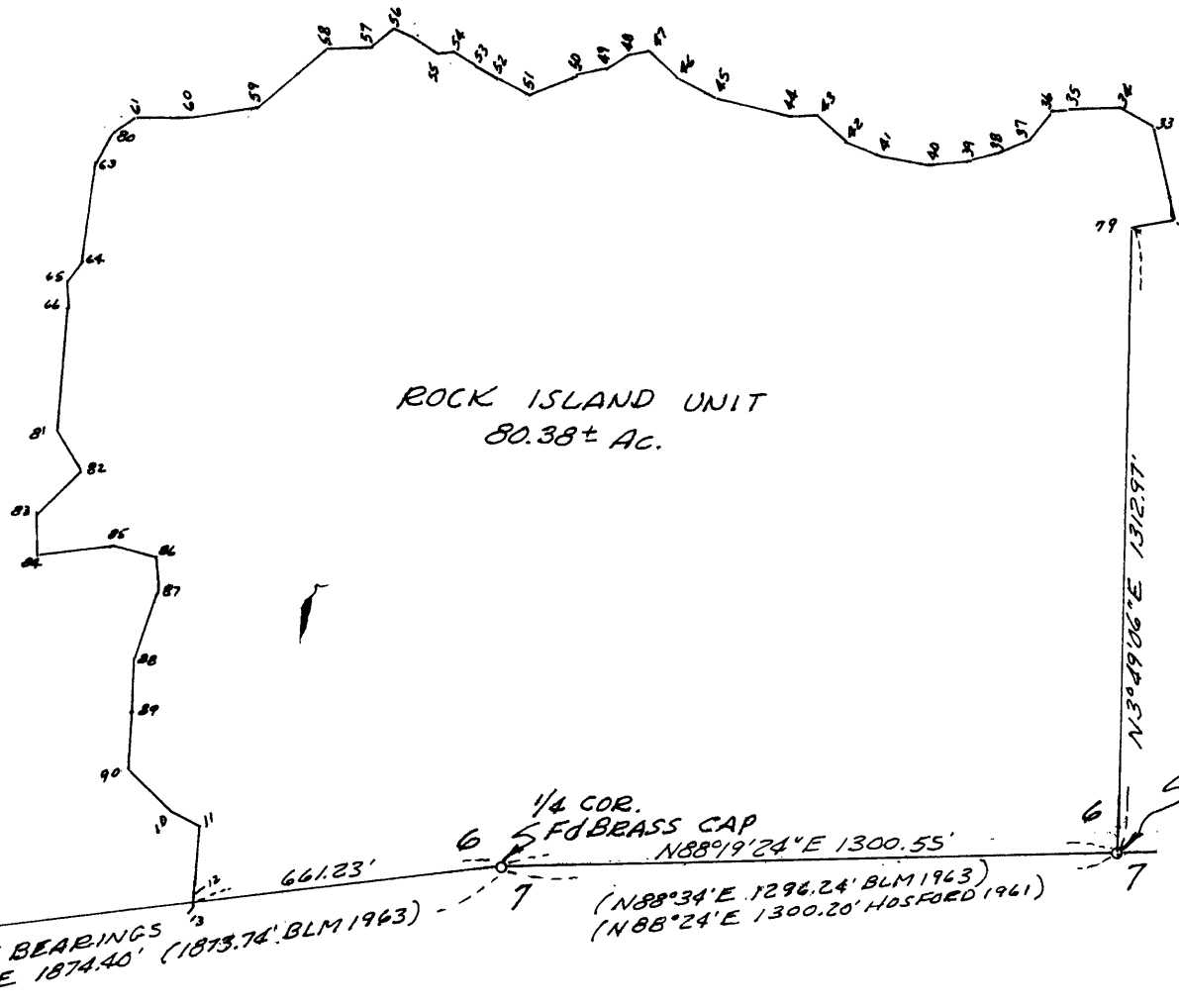
SCALE: 1" = 400'

COUNTY SURVEYORS FILE DATA
DO NOT REMOVE FROM OFFICE

FILED ✓
RECEIVED *rw*

COUNTY SURVEYOR
DOUGLAS COUNTY, ORE.

BASED ON SOUTH LINE SEC. 6



REGISTERED
PROFESSIONAL
LAND SURVEYOR

Glenn S. Baughman

OREGON
JULY 14, 1961
GLENN S. BAUGHMAN
536

E 1/16 COR.
SET 5/8" I.P.
FROM BT'S
14" HEM BEARS S57°W 36° FT.
(REC. S54°45'W 36° FT.)
12" CHINA BEARS N52°W 18° FT.
(REC. N55°W 18° FT.)

6149.0090

3.5. NaCS-58/142-6