

SKETCH OF CORNERS FOUND ALONG THE NORTH LINE OF SECTION 36, T.25S. R.2W.W.M - FOR: WEYERHAEUSER CO.

BY: C & G ENGINEERING INC, - ROSEBURG, OREGON

AUGUST 1977

SCALE: 1"=400'

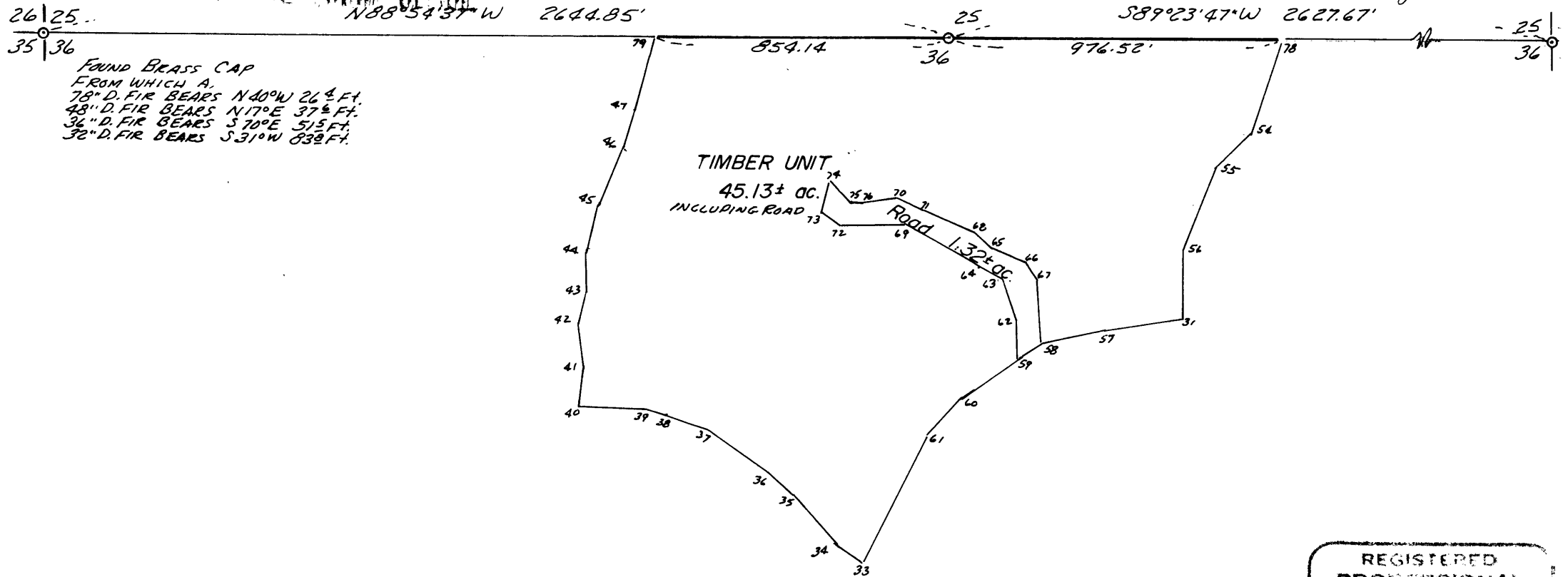
FILED ✓
RECEIVED KC

COUNTY SURVEYORS FILE (ITALIC)
DO NOT REMOVE FROM OFFICE

1/4 COR - FOUND BRASS CAP FROM WHICH A
28" D. FIR BEARS S59°W 218 FT.
24" D. FIR BEARS N65°W 218 FT.
COUNTY SURVEYOR
DOUGLAS COUNTY, ORE.

S. FILE NO. 58/42-5

SOLAR OBSERVATION



FOUND BRASS CAP
FROM WHICH A,
78" D. FIR BEARS N40°W 264 FT.
48" D. FIR BEARS N17°E 37 1/2 FT.
36" D. FIR BEARS S70°E 515 FT.
32" D. FIR BEARS S31°W 838 FT.

TIMBER UNIT
45.13± AC.
INCLUDING ROAD
Road 1.32± AC.

REGISTERED
PROFESSIONAL
LAND SURVEYOR

Glenn S. Baughman

OREGON
JULY 4 1961
GLENN S. BAUGHMAN
536