

SURVEY FOR DESCRIPTION FOR MORTGAGE PURPOSES

IN DLC NO. 38 - SECTION 30, T.24S. R.5W.W.M.

FOR: WES SUTTON
BY: C & G ENGINEERING INC.

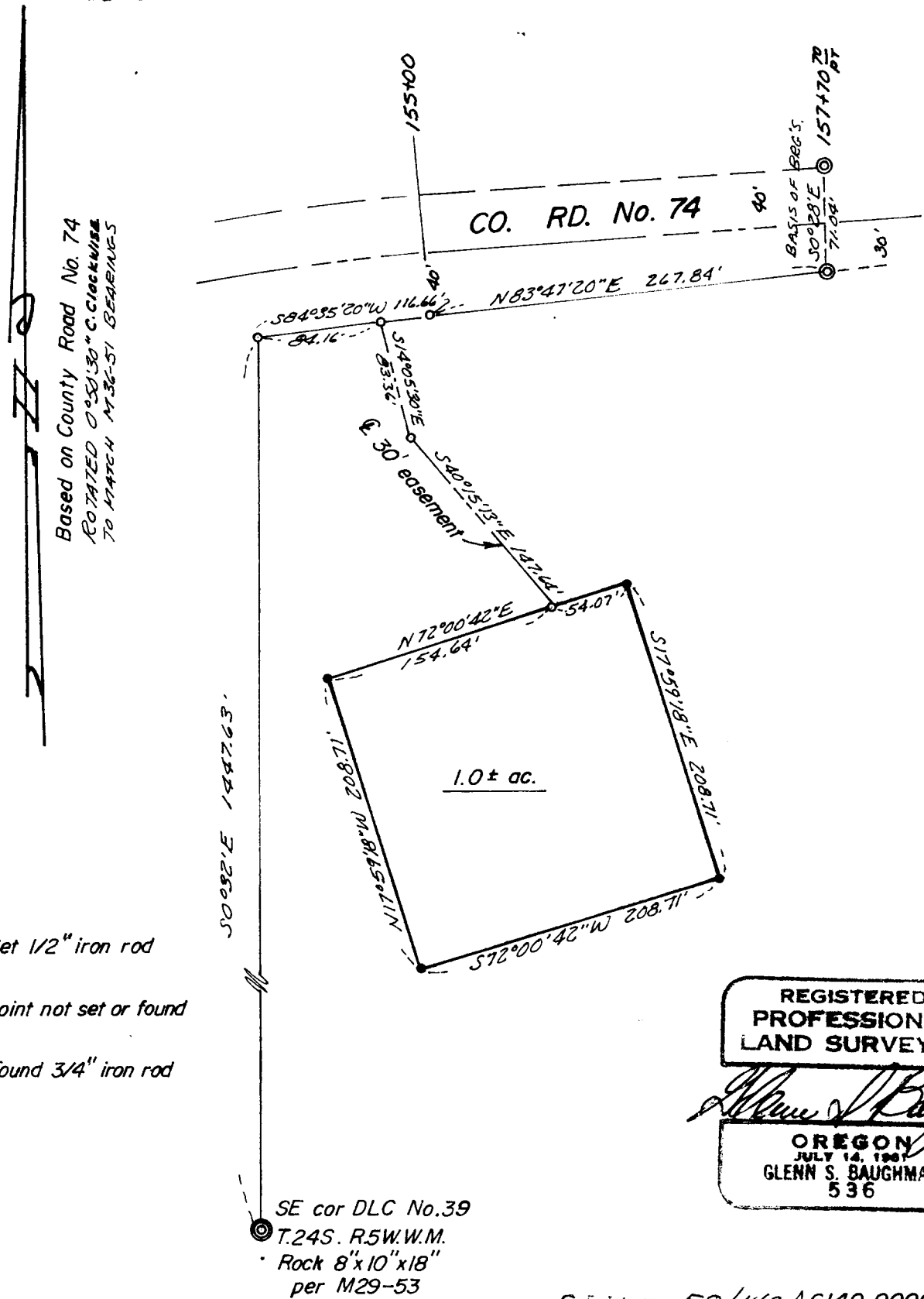
JULY 1977 SCALE: 1"=100'

FILED *✓*
RECEIVED *cc*

AUG 15 1977

COUNTY SURVEYOR
DOUGLAS COUNTY, ORE.

COUNTY SURVEYORS FILE DATA
DO NOT REMOVE FROM OFFICE



REGISTERED
PROFESSIONAL
LAND SURVEYOR

Glenn S. Baughman

OREGON
JULY 14, 1967
GLENN S. BAUGHMAN
536