

SURVEY TO SET PROPERTY CORNERS

IN SECTION 15, T.26S. R.4W.W.M.

FOR: M.A. BLACKMORE

BY: C & G ENGINEERING INC.

FILED ✓

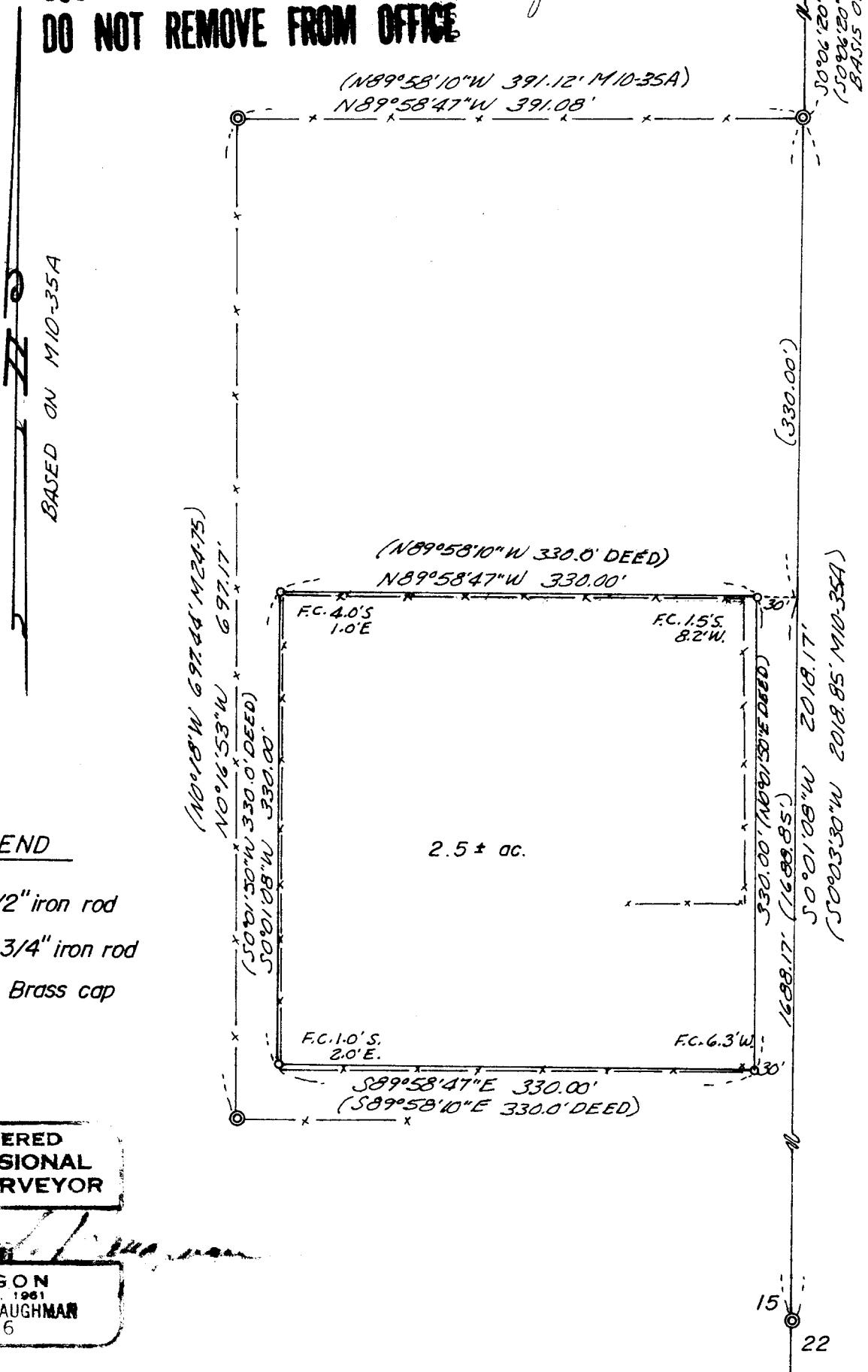
RECEIVED ✓

AUG 13 1977

JULY 1977 SCALE: 1"=100'

COUNTY SURVEYOR
DOUGLAS COUNTY, ORE.

**COUNTY SURVEYORS FILE DATA
DO NOT REMOVE FROM OFFICE**



LEGEND

- — Set 1/2" iron rod
- ⊙ — Found 3/4" iron rod
- ⊙ — Found Brass cap

REGISTERED
PROFESSIONAL
AND SURVEYOR

Glenn S. Baughman

OREGON
JULY 14, 1961
GLENN S. BAUGHMAN
536