

SURVEY FOR DESCRIPTION FOR MORTGAGE PURPOSES

IN SECTION 35, T.27S. R.7W.W.M.

FOR: ROY ELLIS

BY: C & G ENG, INC.

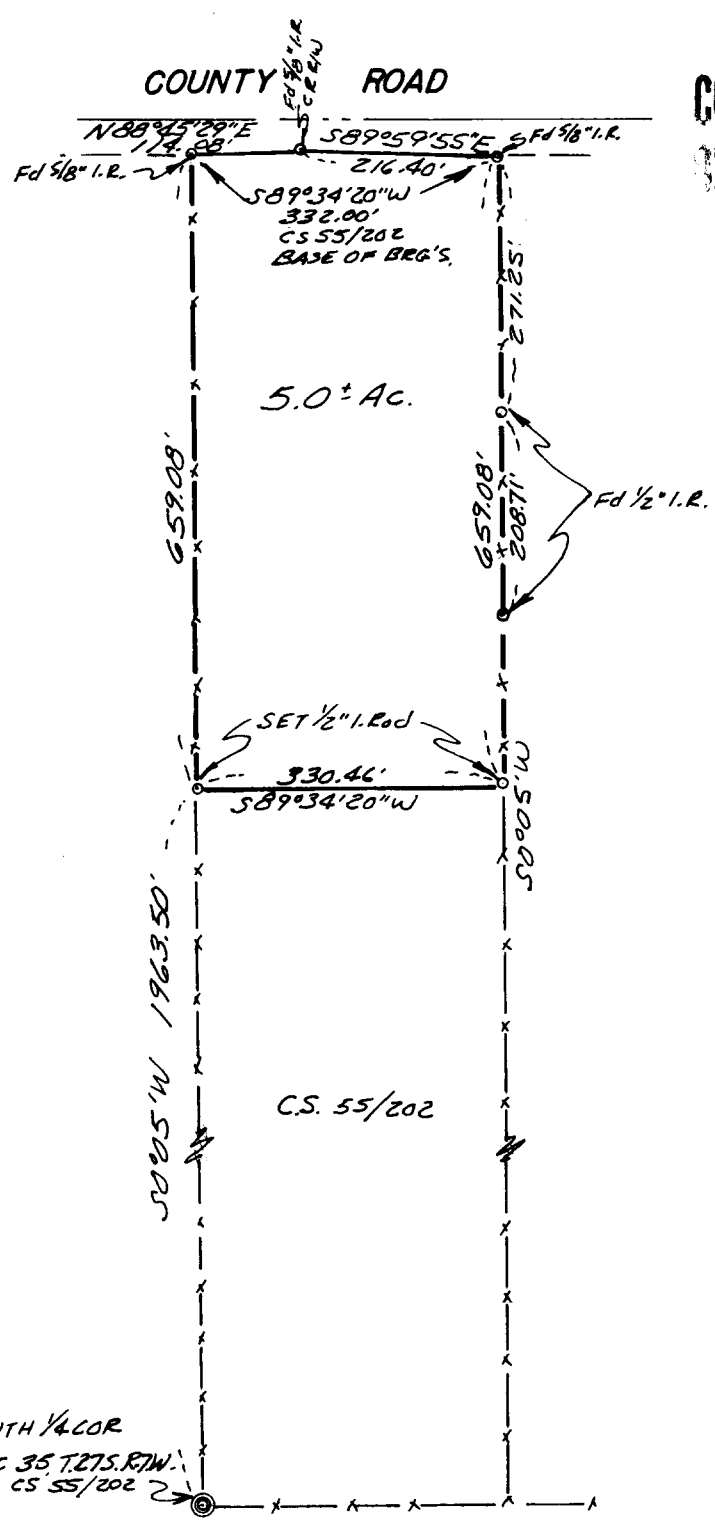
MAY 1977 SCALE: 1"=200'

FILED ✓
RECEIVED DRS

MAY 16 1977

COUNTY SURVEYOR
DOUGLAS COUNTY, ORE.

COUNTY SURVEYORS FILE DATA
DO NOT REMOVE FROM OFFICE



BASED ON C.S. 55/202

SOUTH 1/4 COR
SEC 35, T.27S. R.7W.
PER C.S. 55/202

REGISTERED
PROFESSIONAL
LAND SURVEYOR

OREGON
JULY 14, 1961
GLENN S. BAUGHMAN
536