

# SURVEY FOR DESCRIPTION FOR MORTGAGE PURPOSES

IN SECTION 35, T.27S. R.7W.W.M.

FOR: MELVIN REAGLES

BY: C & G ENG, INC.

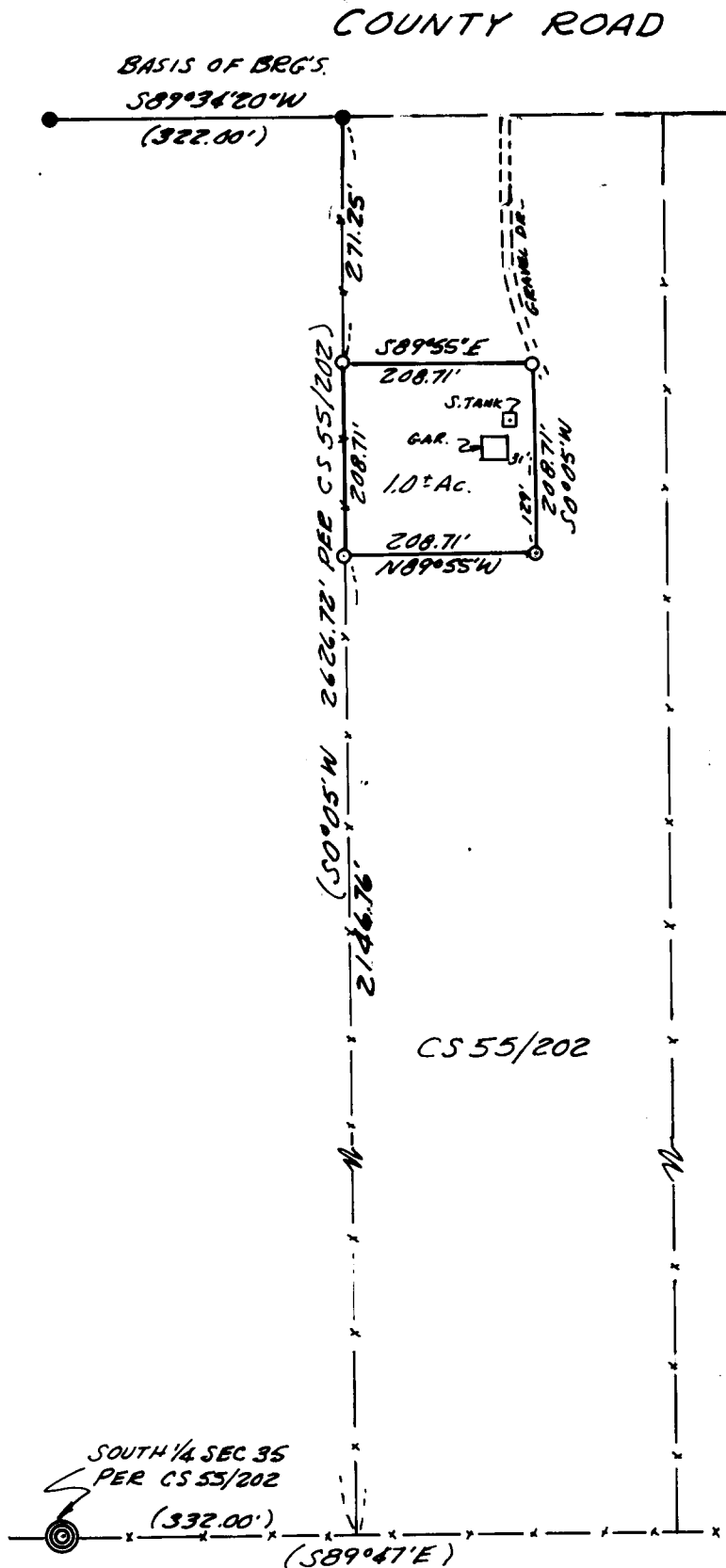
FEBRUARY 1977 SCALE: 1" = 200'

FILED ✓  
RECEIVED 2/4

FEB 17 1977

COUNTY SURVEYOR  
DOUGLAS COUNTY, ORE.

COUNTY SURVEYORS FILE DATA  
DO NOT REMOVE FROM OFFICE



### LEGEND

- — Set 1/2" iron rod
- — Found 5/8" iron rod
- ⊙ — Brass cap per CS 55/202

REGISTERED  
PROFESSIONAL  
LAND SURVEYOR

*Glenn S. Baughman*

OREGON  
JULY 13, 1961  
GLENN S. BAUGHMAN  
536