

# SURVEY FOR DESCRIPTION

IN THE SE 1/4-SEC. 15 T.27S., R.5W.W.M.  
 FOR: NORDIC VENEER - BY: C & G ENG, INC.

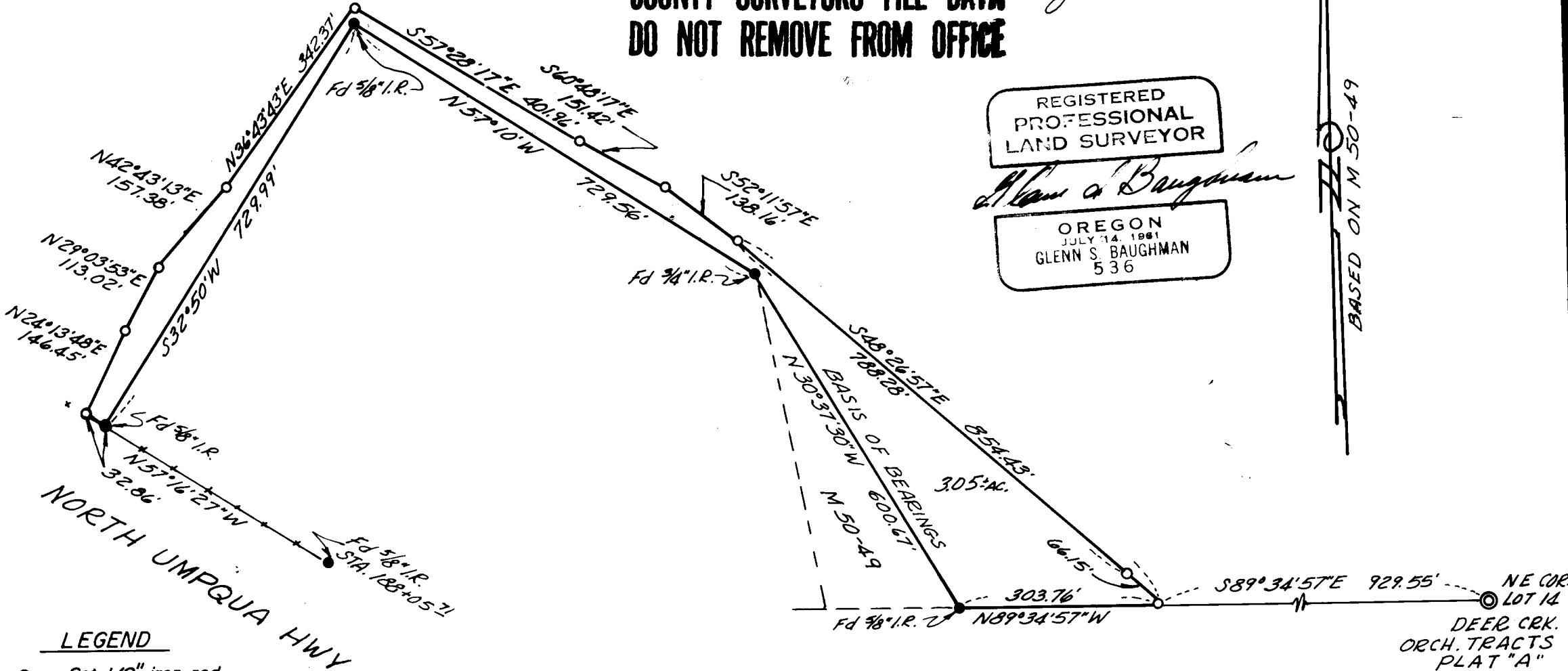
JANUARY 1977

SCALE: 1" = 200'

COUNTY SURVEYORS FILE DATA  
 DO NOT REMOVE FROM OFFICE

FILED ✓  
 RECEIVED ✓  
 JAN 12 1977

COUNTY SURVEYOR  
 DOUGLAS COUNTY, ORE.



REGISTERED  
 PROFESSIONAL  
 LAND SURVEYOR

*Glenn S. Baughman*

OREGON  
 JULY 14, 1961  
 GLENN S. BAUGHMAN  
 536

BASED ON M 50-49

**LEGEND**

- — Set 1/2" iron rod
- — Found point, as noted
- ⊙ — Found 1" axle