

**SURVEY  
OF  
W 1/2 SOUTH LINE  
SECTION 24, T25S, R3W, W.M.  
FOR  
WEYERHAEUSER COMPANY**

**COUNTY SURVEYORS FILE DATA  
DO NOT REMOVE FROM OFFICE**

FILED *v*  
RECEIVED *v*  
JAN 12 1977  
COUNTY SURVEYOR  
DOUGLAS COUNTY, ORE.

S 1/4 CORNER  
FOUND : GLO BRASS CAP 1943  
20" CEDAR, N55E, 6.2'  
W.CO. R.P.  
24" CEDAR, S3W, 13.0'  
SCRIBE VIS & W.CO. R.P.

**LEGEND :**

CORNER FOUND   
LINE BLAZED   
IRON FENCE POST SET 

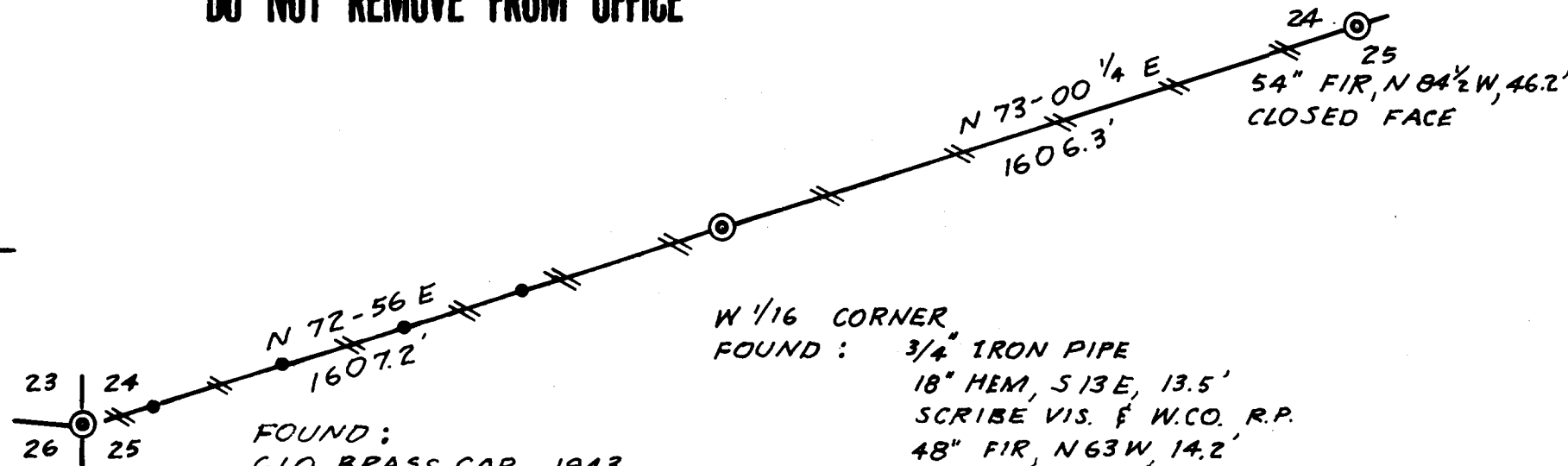
BEARING - ASSUMED

SCALE: 1" = 400'

DEC. 1976

BY :  
TRIANGLE ENGR. CO.  
EUGENE, OR 97401

PRECISION  
1/17, 150



FOUND :  
GLO BRASS CAP 1943  
12" HEM STUMP, S10E, 15.8'  
W.CO. R.P.  
30" FIR STUMP, S50W, 48.0'  
CLOSED FACE  
10" YEW, S47W, 6.3'  
SCRIBE VISIBLE & W.CO. R.P.  
12" HEM, N9W, 52.9' SCRIBE VIS.  
36" FIR STUMP, N9E, 23.0' W.CO. R.P.  
18" HEM, N40E, 40.0' SCRIBE VIS.

W 1/16 CORNER  
FOUND : 3/4" IRON PIPE  
18" HEM, S13E, 13.5'  
SCRIBE VIS. & W.CO. R.P.  
48" FIR, N63W, 14.2'  
W.CO. R.P.  
20" HEM, N22E, 46.0'  
SCRIBE VIS.