

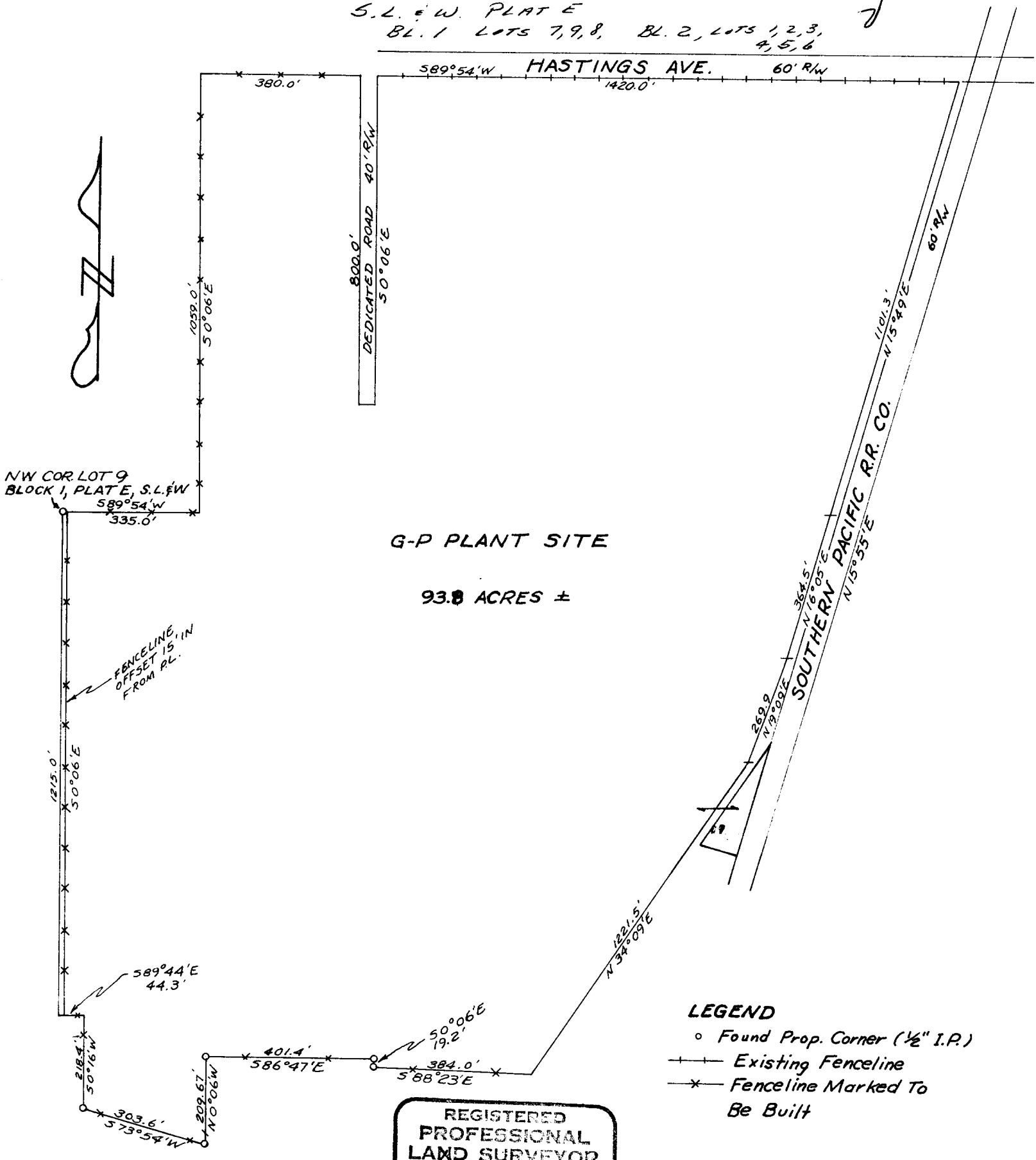
SURVEY OF THE  
 GEORGIA PACIFIC CORPORATION  
 SUTHERLIN PLANT SITE  
 IN THE  
 E 1/2 SEC. 19 AND W 1/2 SEC. 20  
 T. 25 S., R. 5 W., W.M.

FILED ✓  
 RECEIVED ✓

JAN 10 1977

COUNTY SURVEYOR  
 DOUGLAS COUNTY, ORE.

S.L. & W. PLAT E  
 BL. 1 LOTS 7, 9, 8, BL. 2, LOTS 1, 2, 3,  
 4, 5, 6



**LEGEND**

- Found Prop. Corner (1/2" I.P.)
- Existing Fenceline
- Fenceline Marked To Be Built

REGISTERED  
 PROFESSIONAL  
 LAND SURVEYOR

*Willard Curtis*

OREGON  
 JULY 12, 1963  
 WILLARD CURTIS  
 604

Bearings Based On The  
 Recorded Bearing For The  
 Southern Pacific Railroad Line

BY GEORGIA PACIFIC CORP.  
 DECEMBER 1976

SCALE 1" = 300'

COUNTY SURVEYORS FILE DATA  
 DO NOT REMOVE FROM OFFICE

C. S. File No. 58/129