

SURVEY IN SECTION 27, T25S, R7W, W.M.
 FOR CLAUDE CRANE
 BY BHW ENG. & SURVEYING
 SCALE: 1" = 200' OCT., 1976

FILED ✓
 RECEIVED ✓
 NOV 16 1976

COUNTY SURVEY
 DOUGLAS COUNTY, OR

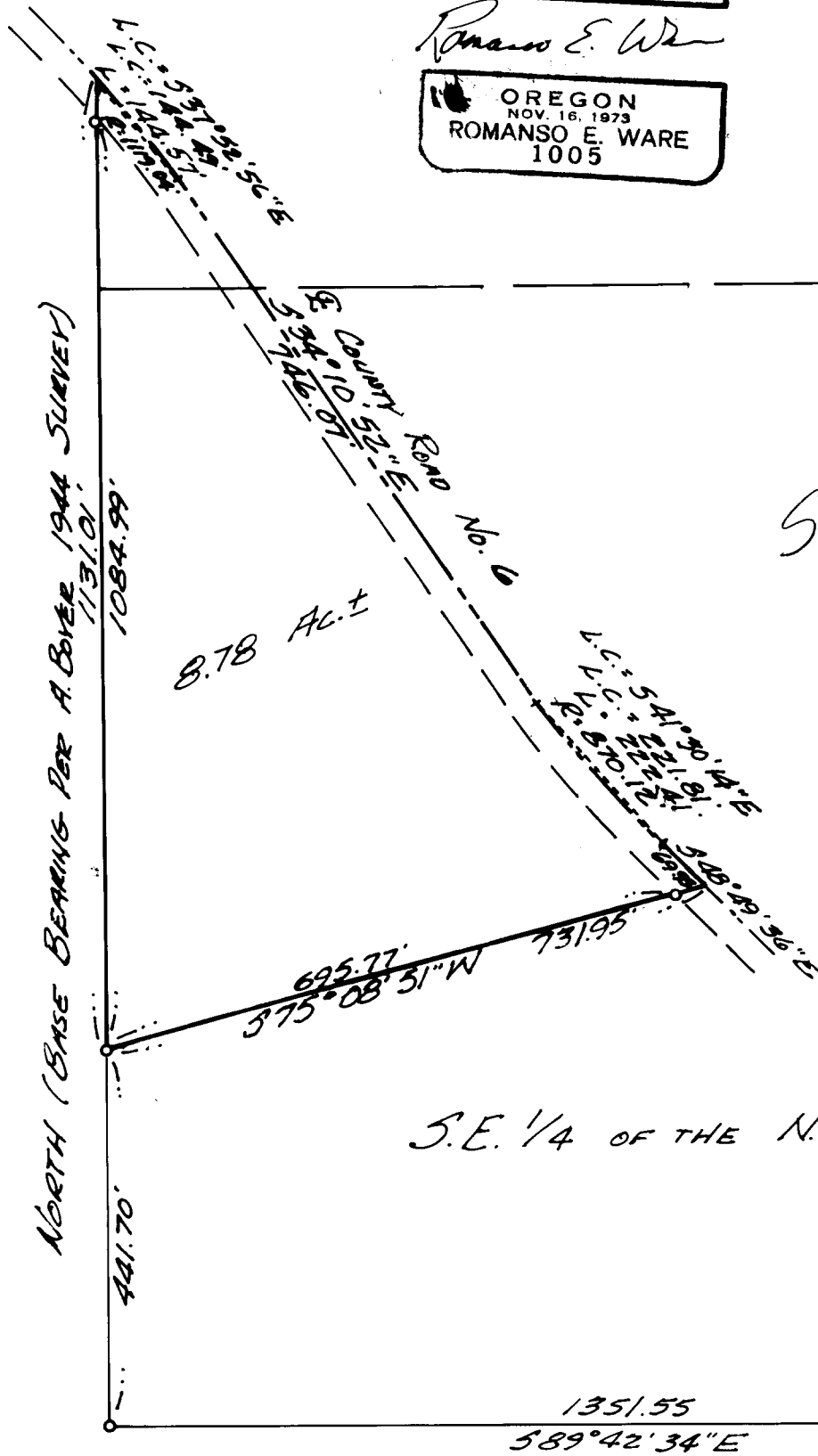
○ — SET 1/2" IRON ROD

COUNTY SURVEYORS FILE DATA
 DO NOT REMOVE FROM OFFICE

REGISTERED
 PROFESSIONAL
 LAND SURVEYOR

Romanso E. Ware

OREGON
 NOV. 16, 1973
 ROMANSO E. WARE
 1005



SEE C.S. 58/145
 CORRECTION FOR SURVEY

S.E. 1/4 OF THE N.E. 1/4

27 1/4
 FO. 5
 26