

SURVEY TO SET PROPERTY CORNERS

IN LOT 21 OAKS ADDITION - SEC. 25, T.27S. R.6W.W.M.

FOR: ROBERTS CREEK WATER DISTRICT
BY: C & G ENG, INC.

FILED
RECEIVED

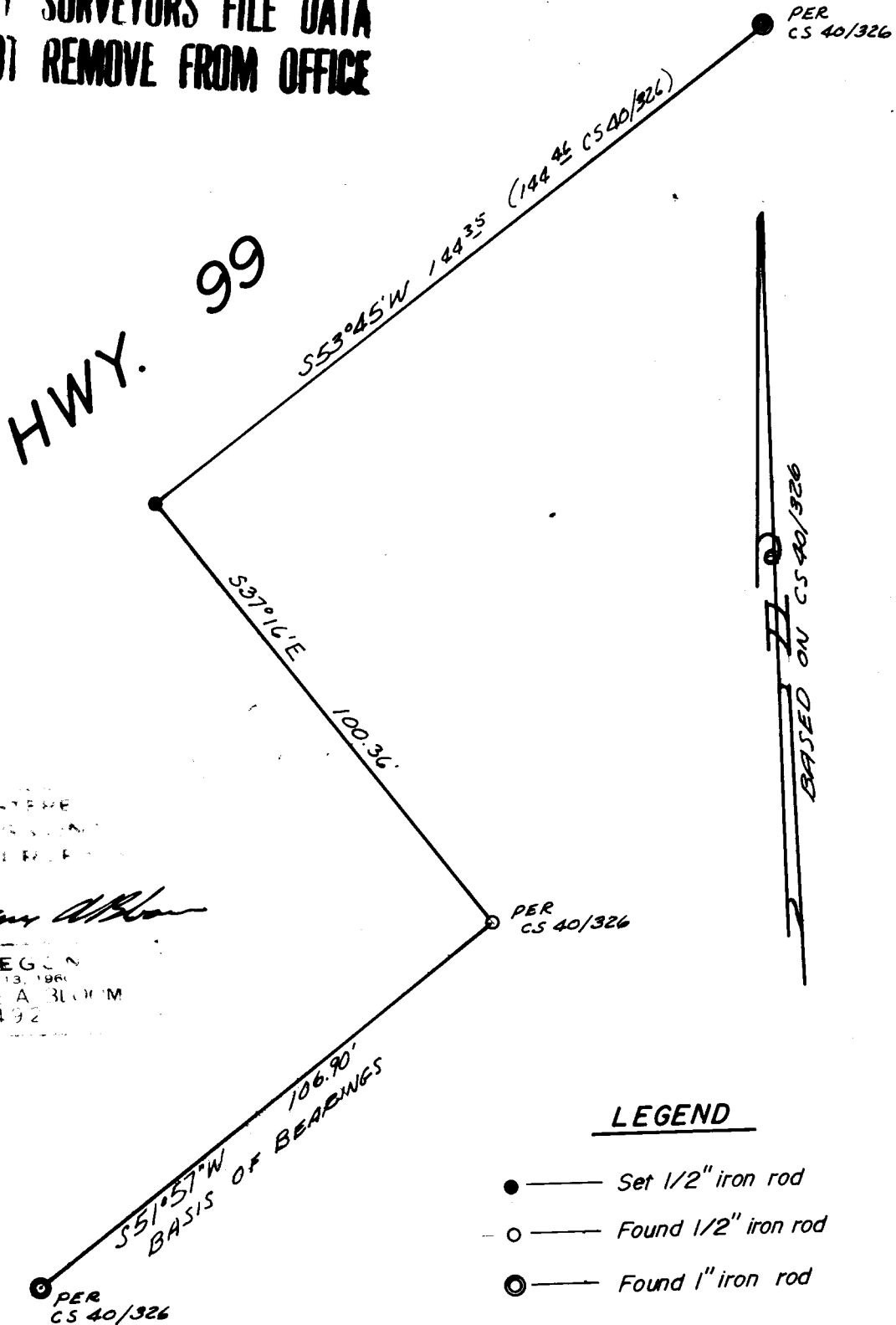
DEC 30 1976

DECEMBER 1976

SCALE: 1" = 30'

COUNTY SURVEYOR
DOUGLAS COUNTY, ORE.

COUNTY SURVEYORS FILE DATA
DO NOT REMOVE FROM OFFICE



REGISTERED
PROFESSIONAL
LAND SURVEYOR

Eugene A. Bloom

OREGON
MAY 13, 1966
EUGENE A. BLOOM
192

LEGEND

- — Set 1/2" iron rod
- — Found 1/2" iron rod
- ⊙ — Found 1" iron rod