

SURVEY TO SET PROPERTY CORNERS

IN LOT 23 WHISTLER'S HOMES PLAT "B"
SECTION 16 T.26S. R.4W.W.M.

FOR: VERNON MEYER — BY: C & G ENG, INC.

NOVEMBER 1976 — SCALE: 1" = 50'

FILED ✓

RECEIVED ✓

DEC 30 1976

COUNTY SURVEYOR
DOUGLAS COUNTY, ORE.

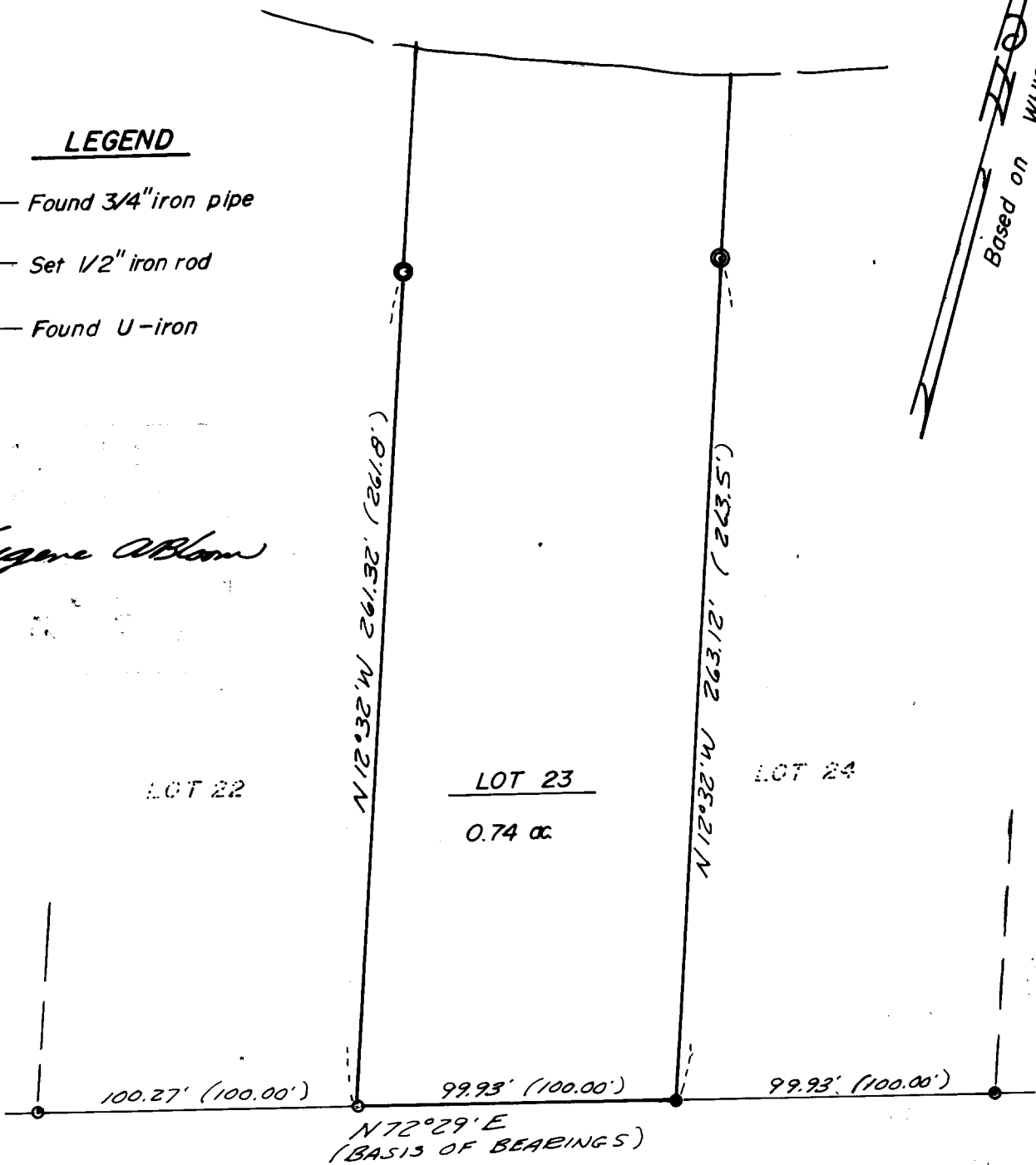
COUNTY SURVEYORS FILE DATA
DO NOT REMOVE FROM OFFICE

NORTH UMPQUA RIVER

LEGEND

- — Found 3/4" iron pipe
- — Set 1/2" iron rod
- ⊙ — Found U-iron

Eugene A. Blom



Based on WHISTLER'S HOMES PLAT "B"

WHISTLER'S LANE