

SURVEY TO SET PROPERTY CORNERS

IN LOT 1 MURPHYVILLE - SEC. 23 T.27S. R.6W.W.M.

FOR: TIM MICHELS
BY: C & G ENG. INC.

OCTOBER 1976

SCALE: 1" = 30'

FILED 2
RECEIVED 29

NOV 9 1976

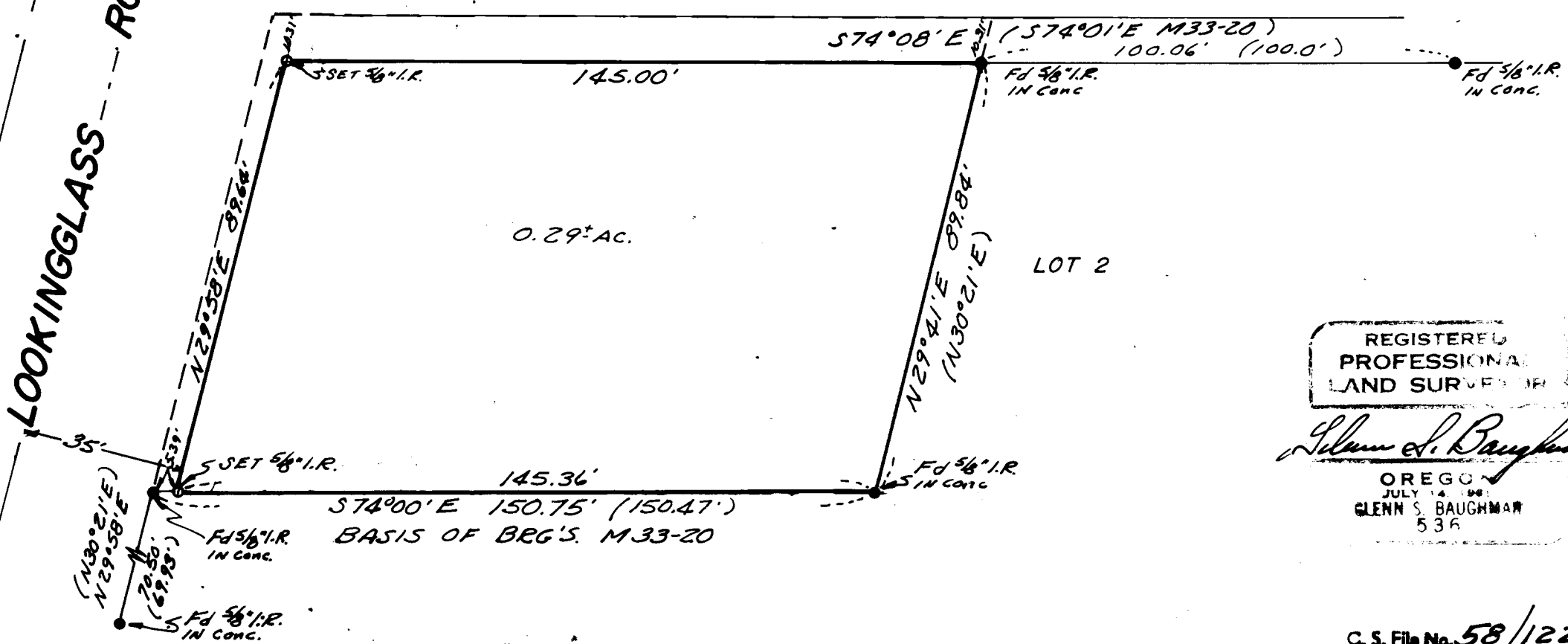
COUNTY SURVEYOR
DOUGLAS COUNTY, ORE

JAY AVE.

COUNTY SURVEYORS FILE DATA
DO NOT REMOVE FROM OFFICE

LOOKINGGLASS ROAD

BASED ON
M 33-20



REGISTERED
PROFESSIONAL
LAND SURVEYOR

Glenn S. Baughman

OREGON
JULY 14 1961
GLENN S. BAUGHMAN
536

C. S. File No. 58/122-1-36-579