

FILED ✓  
RECEIVED ✓

SEP 17 1976

SURVEY FOR DEED DESCRIPTION  
IN SECTION 16, T. 25S., R. 7W. W.M.  
FOR JOHN FANCHIN  
by BRUCE ROGERS  
AUG., 1976  
1" = 200'

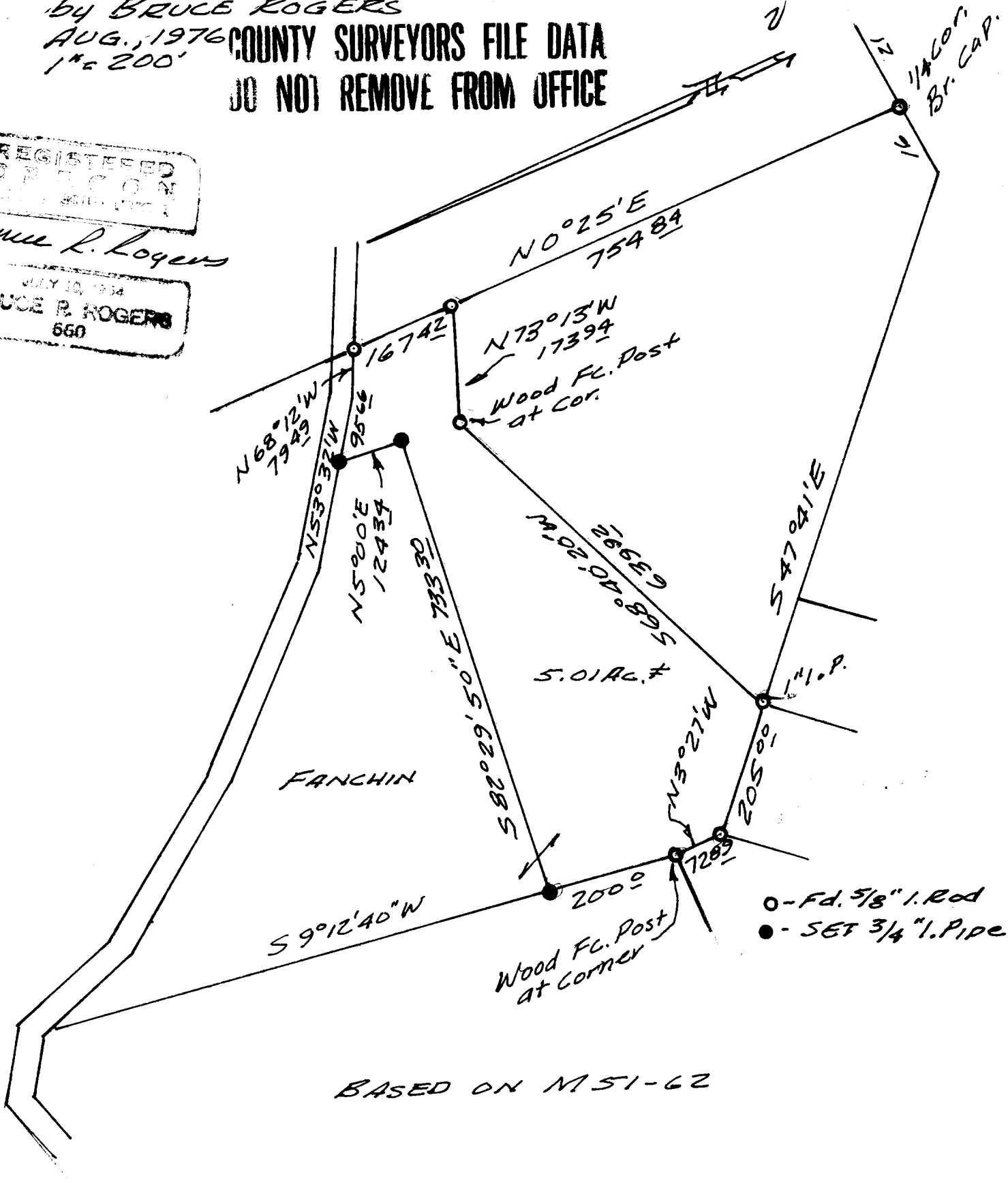
COUNTY SURVEYOR  
DOUGLAS COUNTY, ORE.

COUNTY SURVEYORS FILE DATA  
DO NOT REMOVE FROM OFFICE

REGISTERED  
SURVEYOR  
OREGON

Bruce R. Rogers

JULY 10, 1964  
BRUCE R. ROGERS  
660



BASED ON M 51-62