

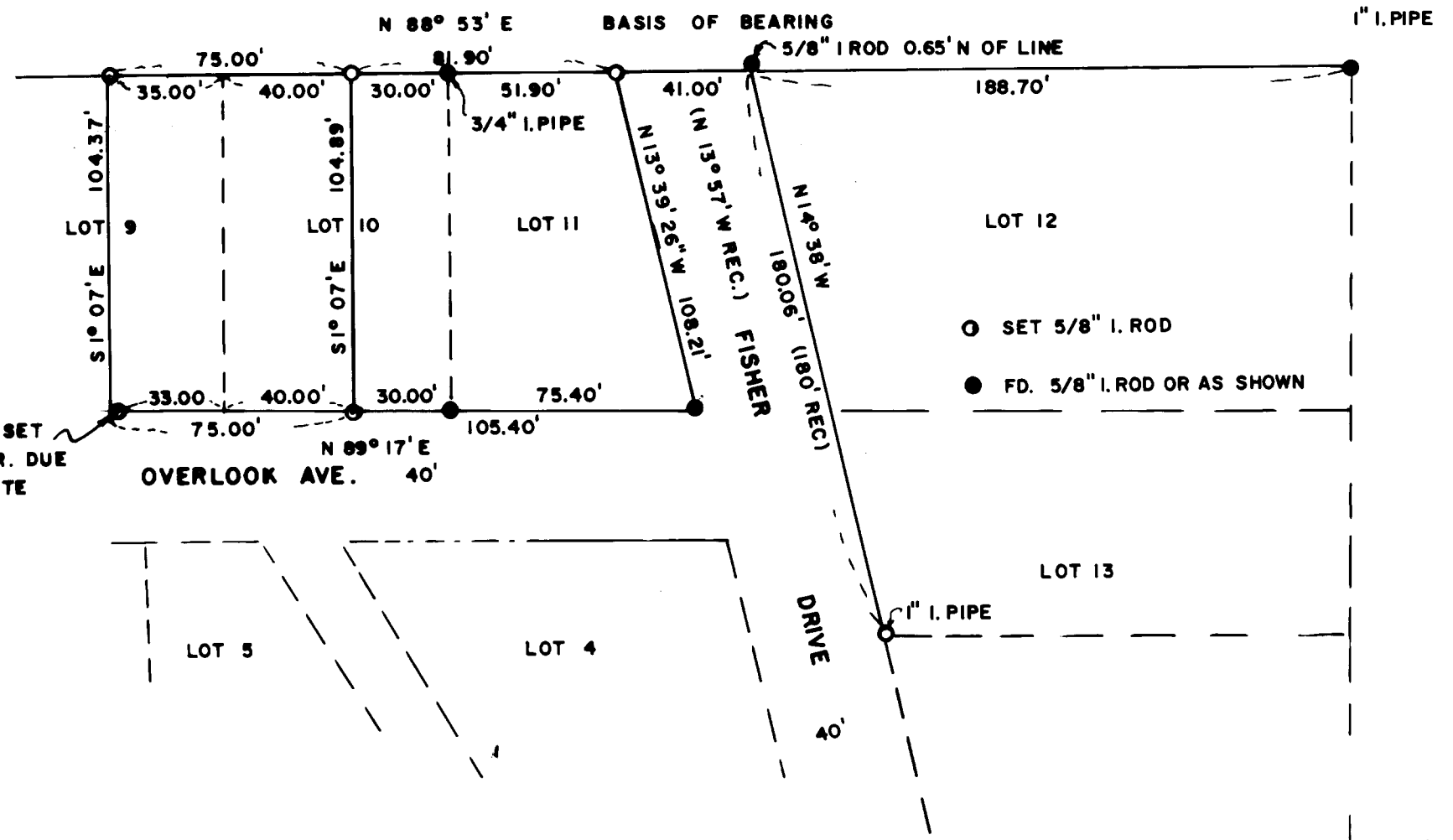
SURVEY OF LOTS 9, 10 AND 11 OF GLEN OAKS ADDITION TO THE CITY OF ROSEBURG  
SEC. 19, T27S, R5W, WM  
FOR K. M. LANCASTER JULY, 1976

BY HAROLD BALL - CIVIL ENGINEER - ROSEBURG, ORE

FILED *J*  
RECEIVED *cf*  
JUL 29 1976

COUNTY SURVEYOR  
DOUGLAS COUNTY, ORE.  
*J*

COUNTY SURVEYORS FILE DATA  
DO NOT REMOVE FROM OFFICE



ALIGNMENT CHECKS W/  
& INTERSECTIONS OF  
OVERLOOK & TERRACE

5/8" I. ROD SET  
2' E. OF COR. DUE  
TO CONCRETE

SEE M 47-13

