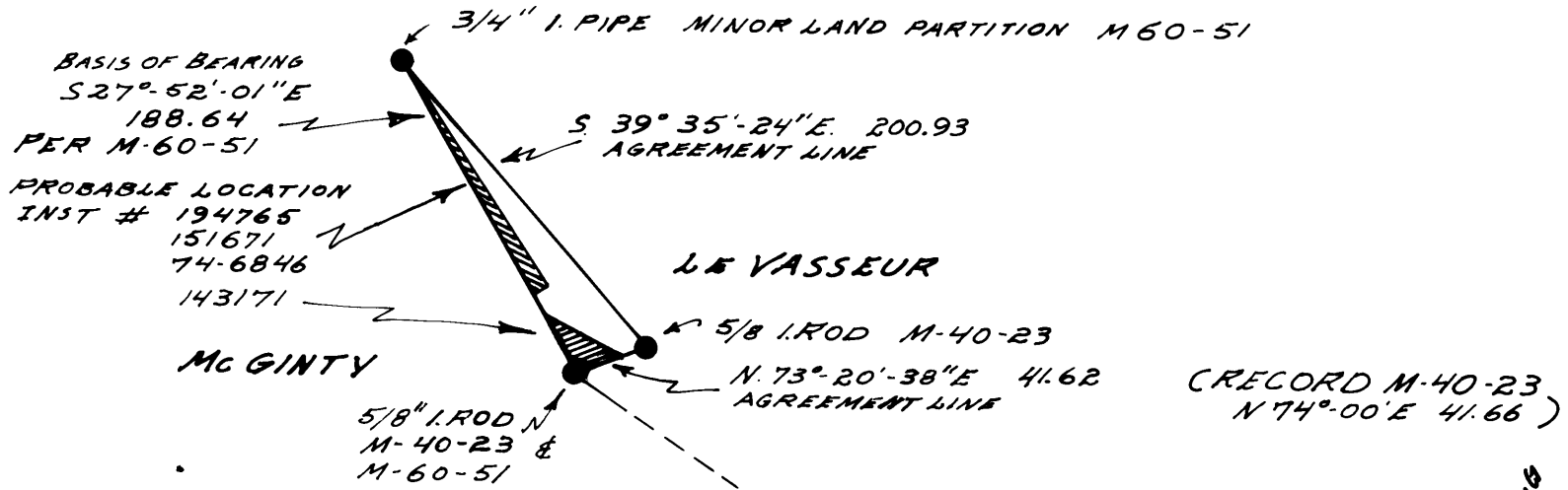


1-011/85

COUNTY SURVEYORS FILE DATA  
DO NOT REMOVE FROM OFFICE

FILED ✓  
RECEIVED *DLF*  
JUL 19 1976  
COUNTY SURVEYOR  
DOUGLAS COUNTY, ORE.



LEGEND  
● FOUND MONUMENT

FIELD SURVEY  
FOR  
PROPERTY LINE AGREEMENT  
SECTION 19, T.30S. R.5W. W.M.  
FOR  
AURTHUR & GERTRUDE LE VASSEUR.  
UMFQUA RESEARCH COMPANY  
MYRTLE CREEK, OREGON JULY 1976

NORTH  
BASIS OF BEARING  
M-60-51  
1" = 100'

REGISTERED  
OREGON  
LAND SURVEYOR  
*William J. Rupper*  
JULY 12, 1968  
WILLIAM J. RUPPER  
866

FOUND BRASS CAP  
1/4 CORNER 19-20