

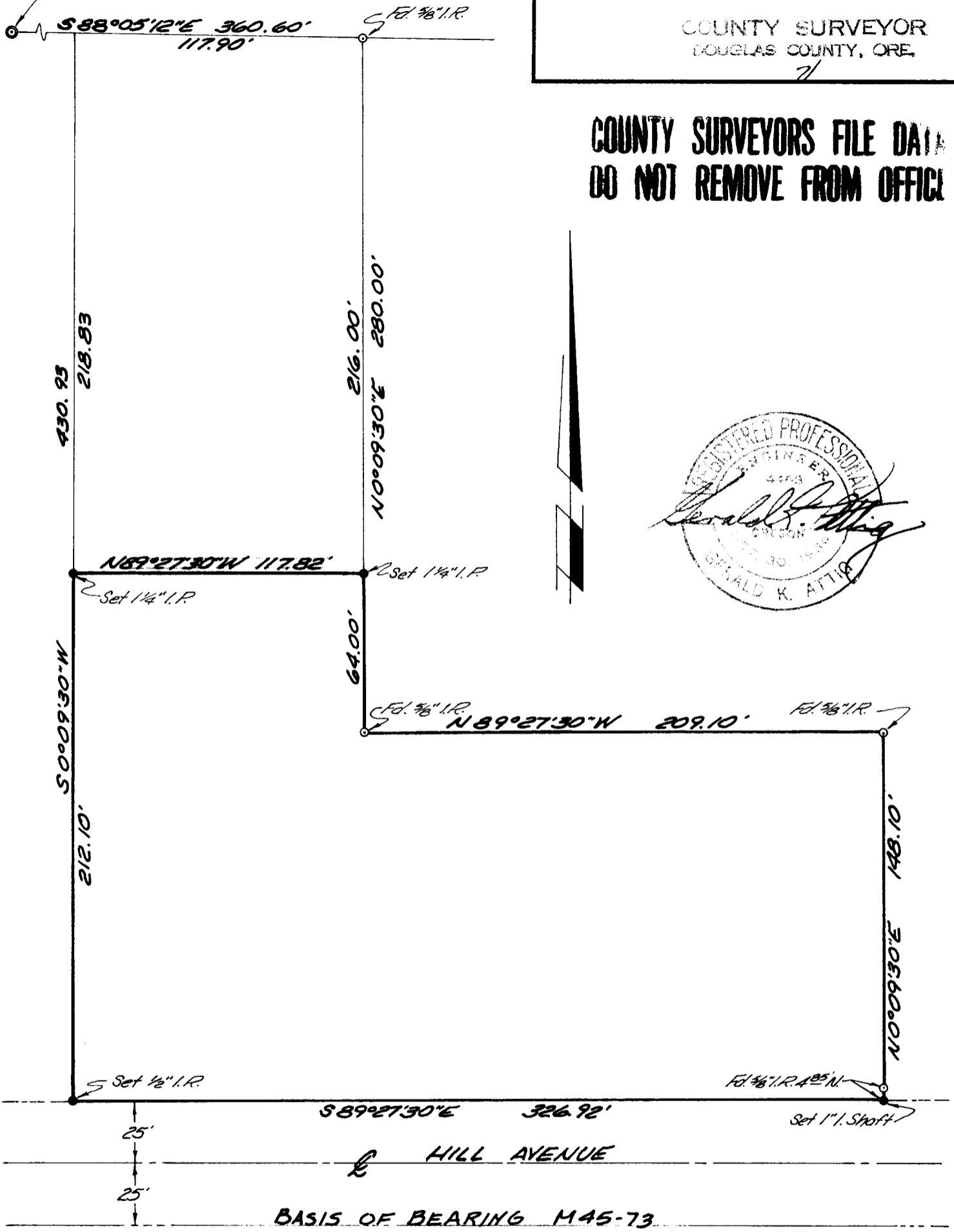
N.E. Cor. Block 10 Housley Heights Plat 1

FILED *2*
RECEIVED *27*

JUL 15 1976

COUNTY SURVEYOR
DOUGLAS COUNTY, ORE.

**COUNTY SURVEYORS FILE DATA
DO NOT REMOVE FROM OFFICE**



MAP OF LAND SURVEY
GLENN COUGILL, OWNER

Section 12, Township 27S, Range 6W, W.M.
DOUGLAS COUNTY, OREGON

1" = 50 Feet
DATE 7-9-76

S. 3, File No. 58/109