

SURVEY TO SET PROPERTY CORNERS IN LOTS 8 & 10, BLOCK 1, ANDERSON'S ADDITION TO CANYONVILLE SECTION 27, T.30S. R.5W.W.M. — SCALE: 1" = 50' — MAY 1976

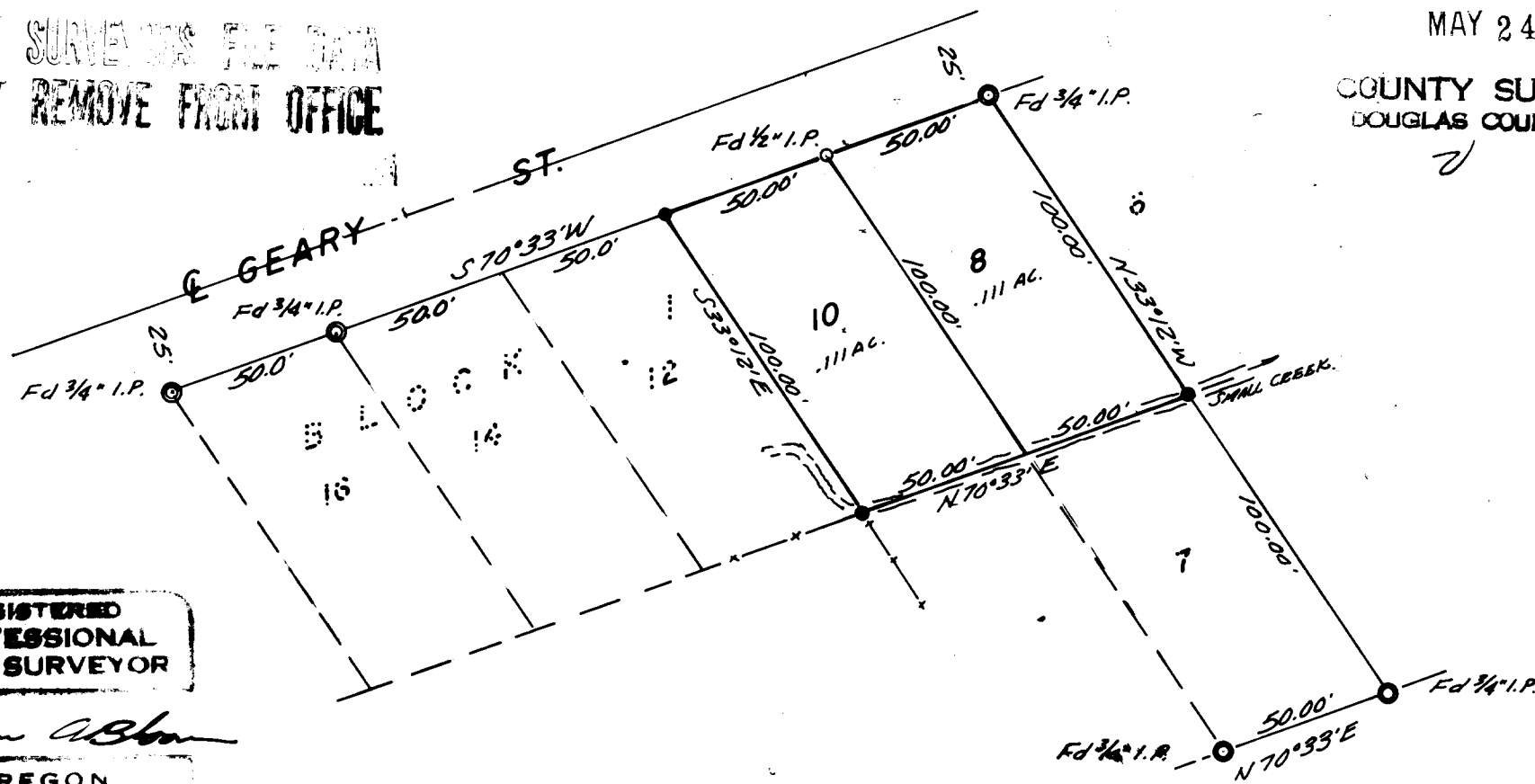
FOR: FRED HARDER
BY: BAUGHMAN SURVEYING SERVICE

FILED *2*
RECEIVED *24*

MAY 24 1976

COUNTY SURVEYOR
DOUGLAS COUNTY, ORE.

COUNTY SURVEYOR'S FILE DATA
DO NOT REMOVE FROM OFFICE



● — DENOTES 1/2" I.R. SET

REGISTERED
PROFESSIONAL
LAND SURVEYOR

Eugene A. Bloom

OREGON
MAY 12, 1960
EUGENE A. BLOOM
492

BASED ON "ANDERSON'S ADDITION"

36359

C. S. File No. 58/106-2