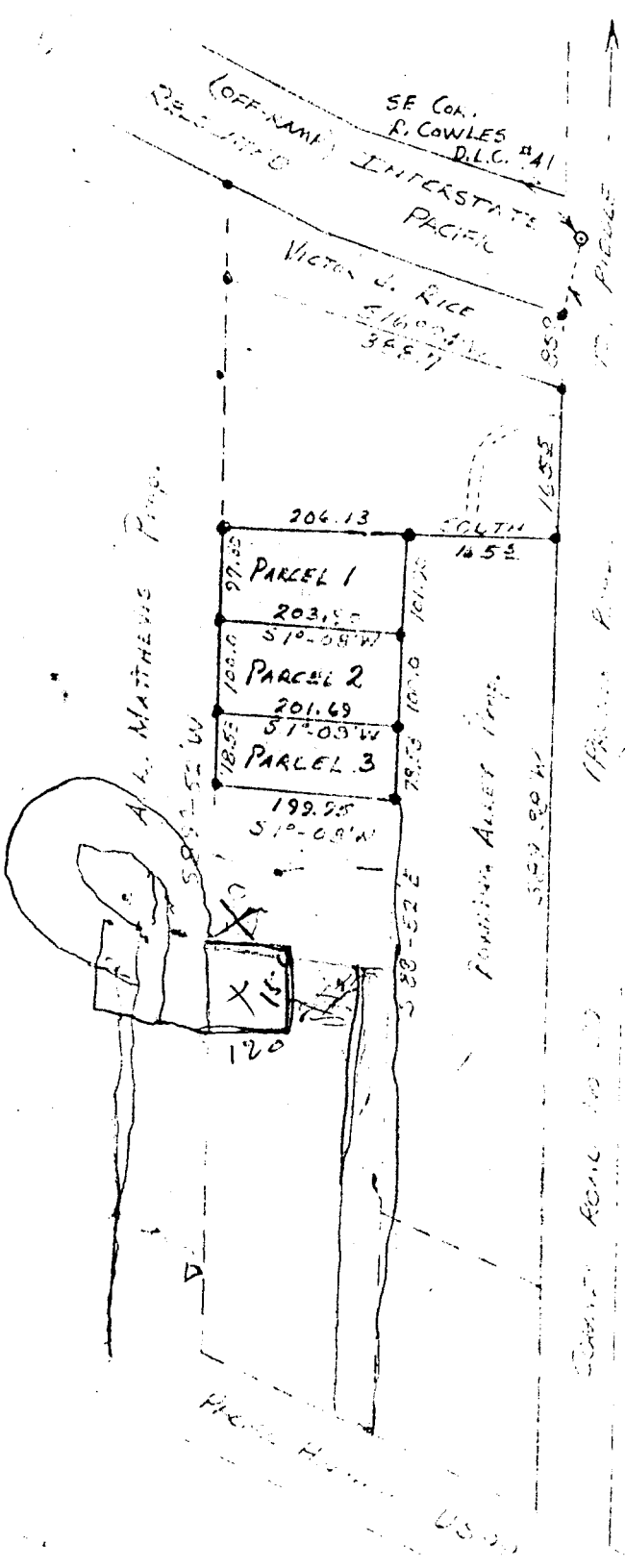
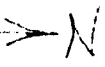


FILED ✓  
RECEIVED JH

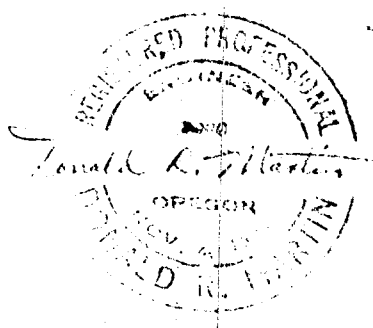
APR 4 1979

COUNTY SURVEYOR  
DOUGLAS COUNTY, ORE.  
JB



PARCEL 1 ~ 0.47 AC.  
 PARCEL 2 ~ 0.47 AC.  
 PARCEL 3 ~ 0.36 AC.

**COUNTY SURVEYORS FILE DATA  
DO NOT REMOVE FROM OFFICE**



FIELD SURVEY & PLAT FOR  
 ROY CARTE  
 MYRTLE CREEK, ORE.  
 PARCEL IN SE 1/4 SEC 7 T30S R5W W.M.  
 DOUGLAS COUNTY, ORE.  
 SCALE: 1" = 200'

MARTIN ENGINEERING SERVICE ~ MYRTLE CREEK, ORE.

PLAT FOR THE SITE  
 RE-SURVEY OCT. 1970 TRM

C.S. File No. 58/103-15 JANUARY 1969