

FIELD SURVEY & PLAT FOR  
SHERIDAN WOODFOLK  
MYRTLE CREEK, ORE.

FILED ✓  
RECEIVED ✓

JUL 28 1978

SE 1/4 SECTION 7 TWP 30S RGE 5E COUNTY SURVEYOR  
W.M. DOUGLAS COUNTY, OREGON DOUGLAS COUNTY, ORE.

SCALE: 1" = 100'

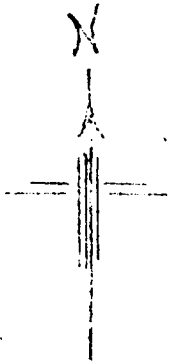
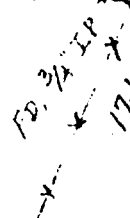
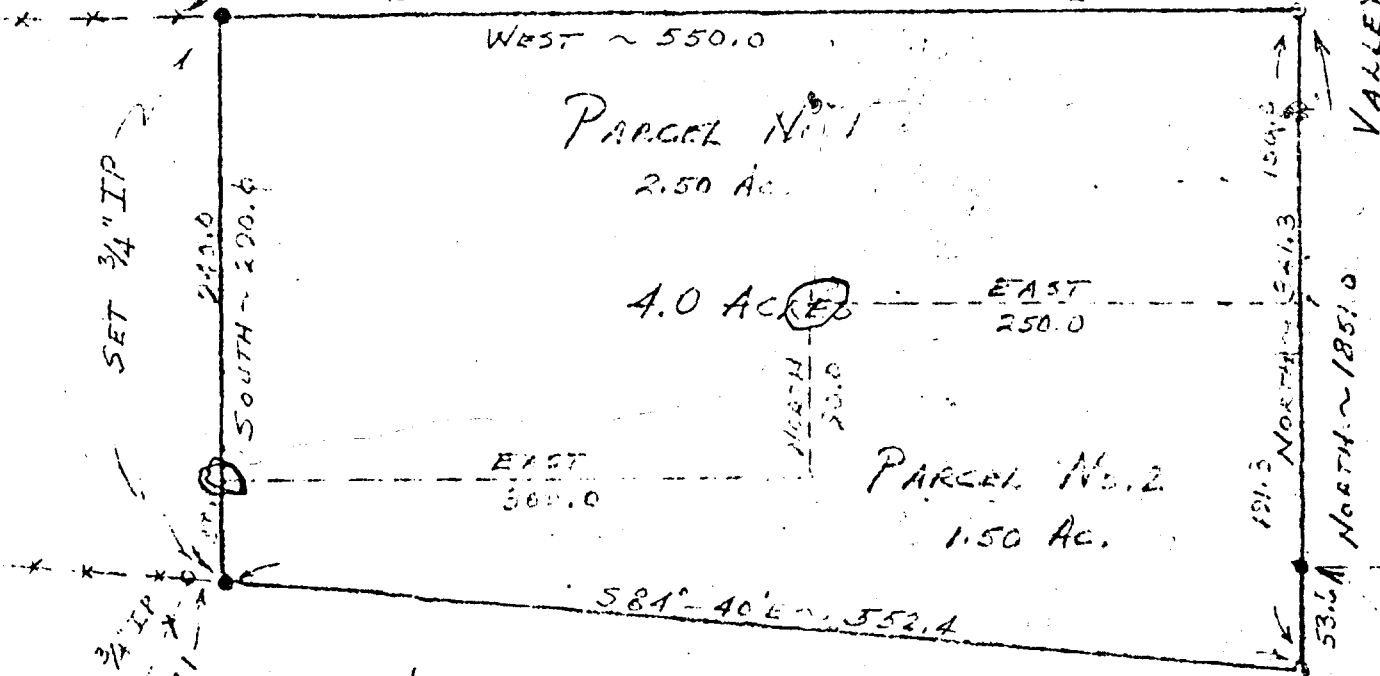
MARTIN ENGINEERING SERVICE - MYRTLE CREEK, ORE.



JULY 1968

S. BOUNDARY LOTS 30 & 35  
"MARCH PLAT A SUBDIV."

SOUTH BOUNDARY W.M. WEAVER D.L.C. # 39



COUNTY SURVEYORS FILE DATA  
DO NOT REMOVE FROM OFFICE

C.S. File No. 58/103-10

NW COR. LOT 18