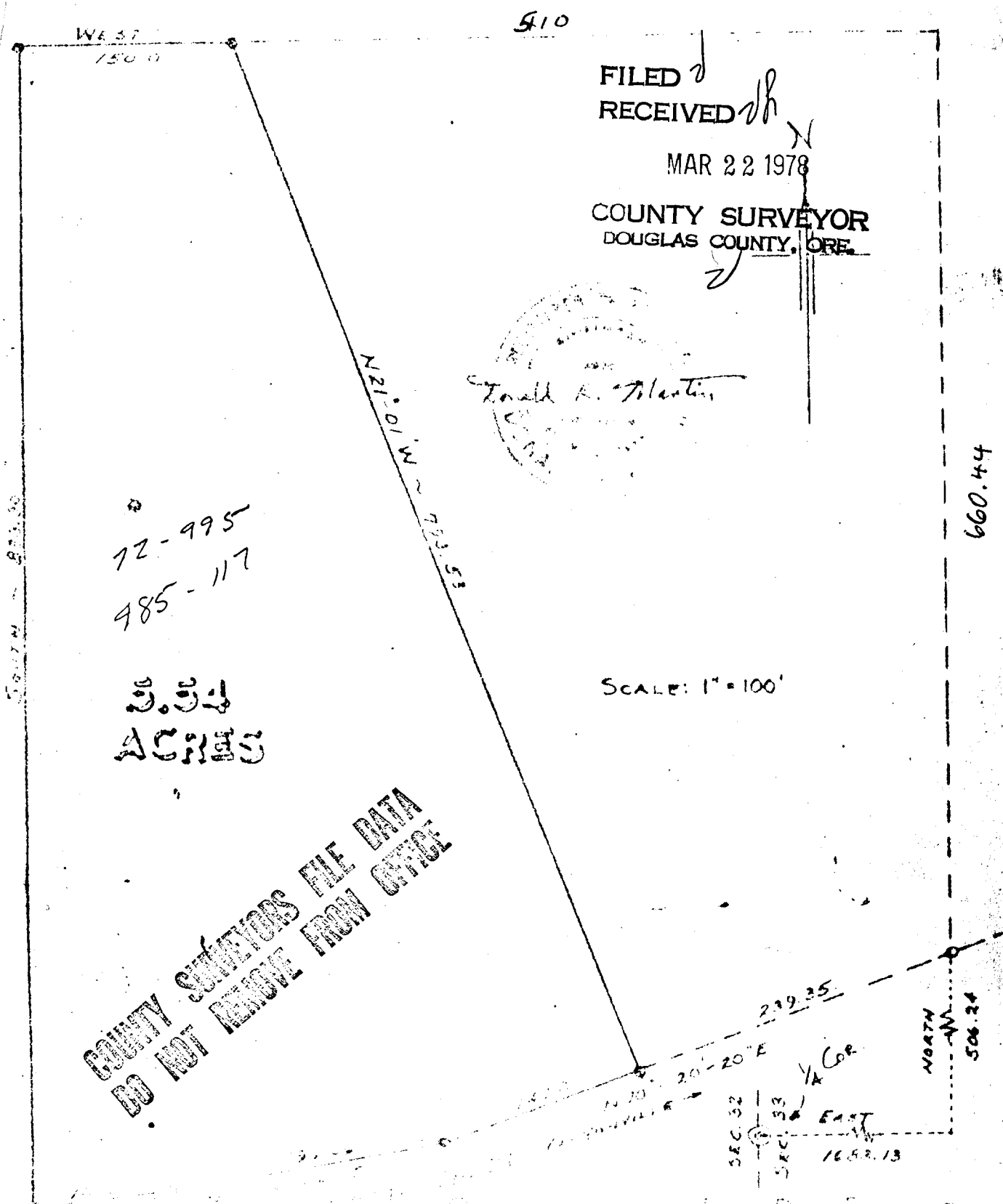


Rec'd. copy from Bruce Rogers 3/27/78

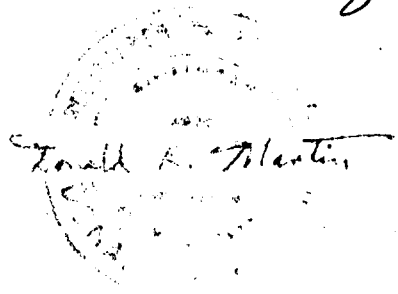


510

FILED  
RECEIVED

MAR 22 1978

COUNTY SURVEYOR  
DOUGLAS COUNTY, ORE.



72-995  
985-117

3.34  
ACRES

SCALE: 1" = 100'

COUNTY SURVEYORS FILE DATA  
DO NOT REMOVE FROM OFFICE

... FROM DATA DESCRIPTION  
... RECORD FOR  
... DOCTOR  
NW 1/4 S. 33 T. 15 S. R. 14 W. M.

1971

CS 58 1103-9