

58/10

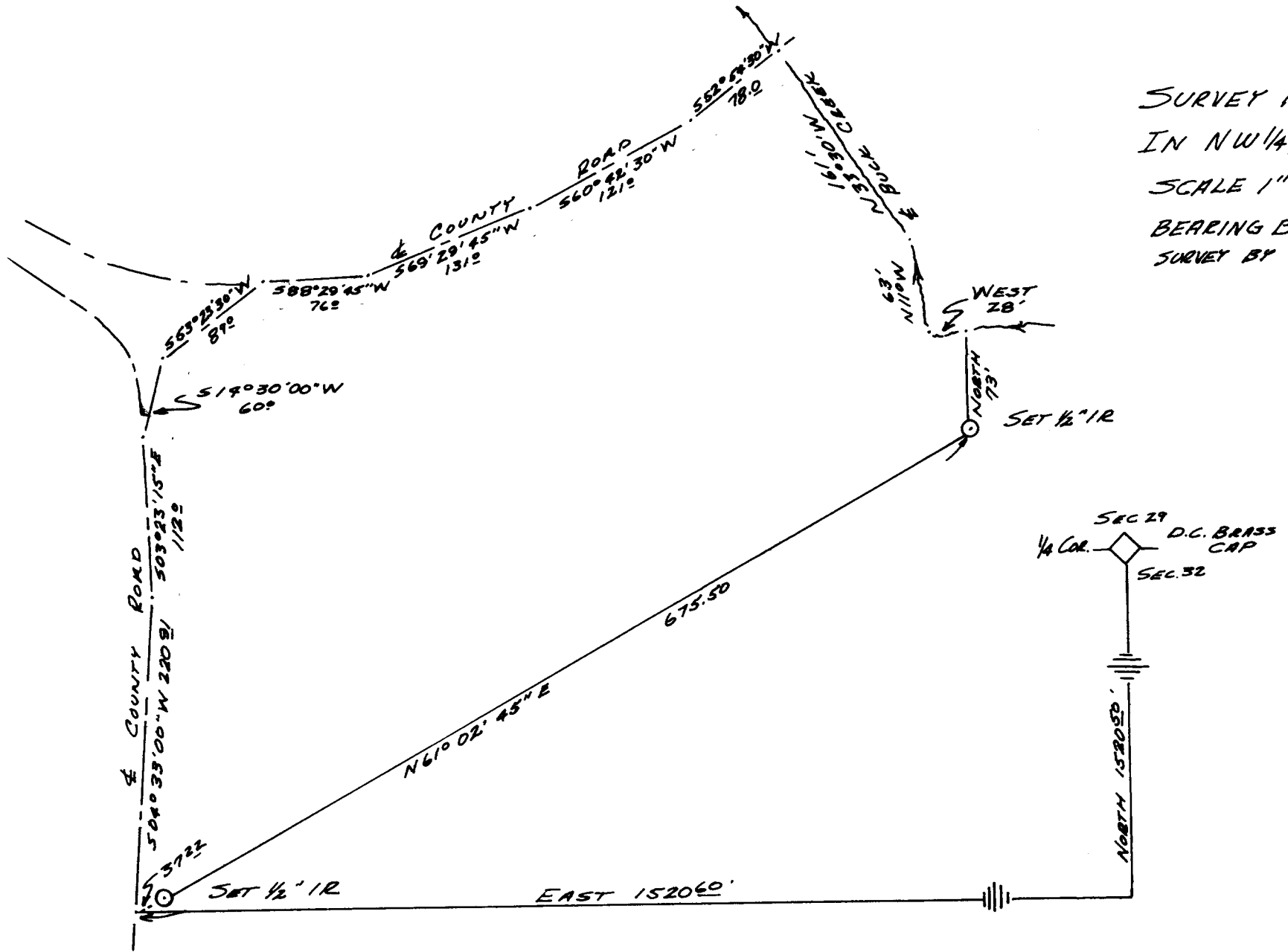
COUNTY SURVEYORS FILE DATA
DO NOT REMOVE FROM OFFICE

FILED ✓
RECEIVED lt

APR 30 1976

COUNTY SURVEYOR
DOUGLAS COUNTY, ORE.

SURVEY FOR ROBERT PERINI
IN NW 1/4, S. 32, T. 215, R. 4 W, W. M.
SCALE 1"=100' AUGUST 1975
BEARING BASE - SOLAR OBS 7-24-75
SURVEY BY GREEN EMPIRE, INC.
OXBRIDGE, OAKRIDGE



REGISTERED
PROFESSIONAL
LAND SURVEYOR

Malcolm M. Clark

OREGON
JULY 12, 1969
MALCOLM M. CLARK
981

