

# SURVEY FOR DEED DESCRIPTION

IN SECTION 21 T25S R7W W.M.

SURVEYED FOR JIM CUSTER MARCH 1976

BY BAUGHMAN SURVEY SERVICE SCALE 1"=50'

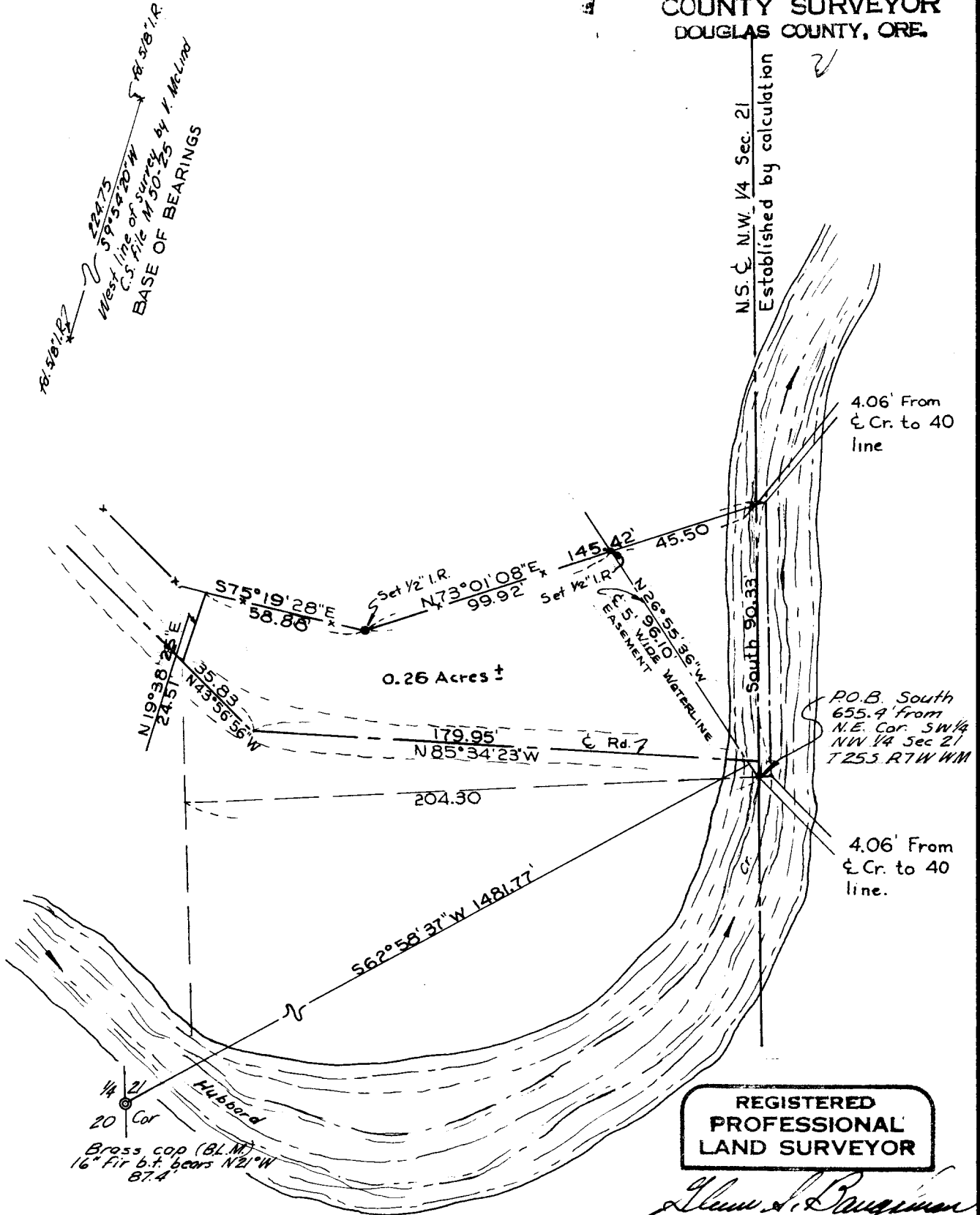
COUNTY SURVEYORS FILE DATA  
DO NOT REMOVE FROM OFFICE

FILED ✓  
RECEIVED G.L.S.

APR 12 1976

COUNTY SURVEYOR  
DOUGLAS COUNTY, ORE.

N.S. & N.W. 1/4 Sec. 21  
Established by calculation ✓



36299