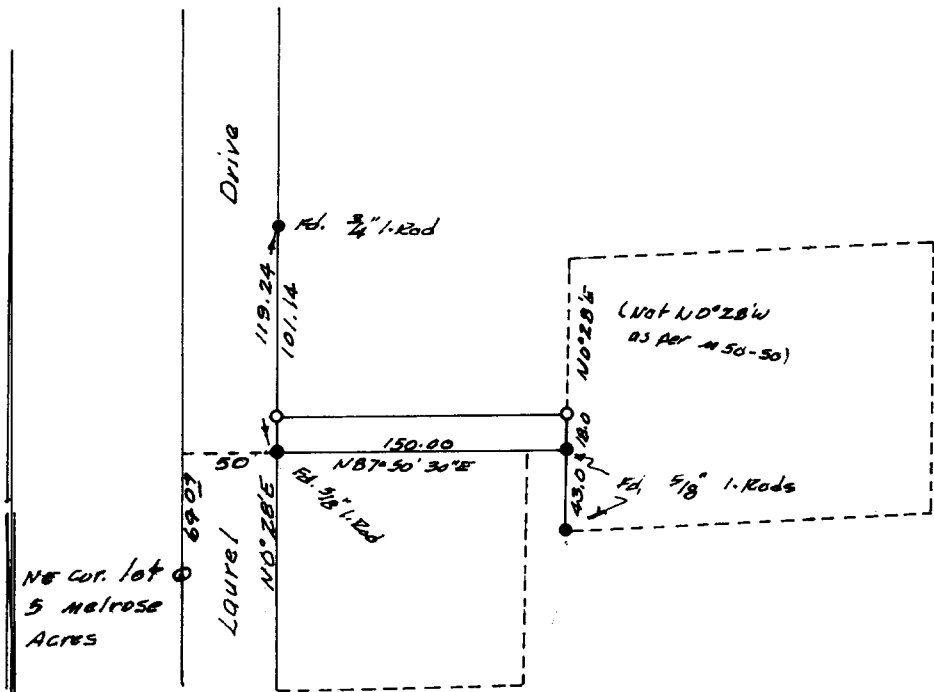


**COUNTY SURVEYORS FILE DATA
DO NOT REMOVE FROM OFFICE**

FILED ✓
RECEIVED *TH*

SURVEY IN DLC 50, S9. T27S. R6W. W.M.
 Surveyed for Curtis Dittman by Don E. Garrett
 Scale 1" Equals 100'
 Bearings are based on M 50-50
 0 - Set 5/8" Iron Rod

MAR 19 1976
 COUNTY SURVEYOR
 HOBBLES COUNTY, ORE.
 ✓



REGISTERED
 PROFESSIONAL
 LAND SURVEYOR

Don E. Garrett

OREGON
 JULY 24, 1961
 DON E. GARRETT
 544