

PROJECTION EAST LINE COREY ST.

IN SECTION 24 T.27S. R.6W. W.M.

FILED ✓
RECEIVED *DK*

FOR: HARRY LINDSEY
BY: A A SURVEYING SERVICE, INC.

JUL 31 1979

COUNTY SURVEYOR
DOUGLAS COUNTY, ORE *JB*

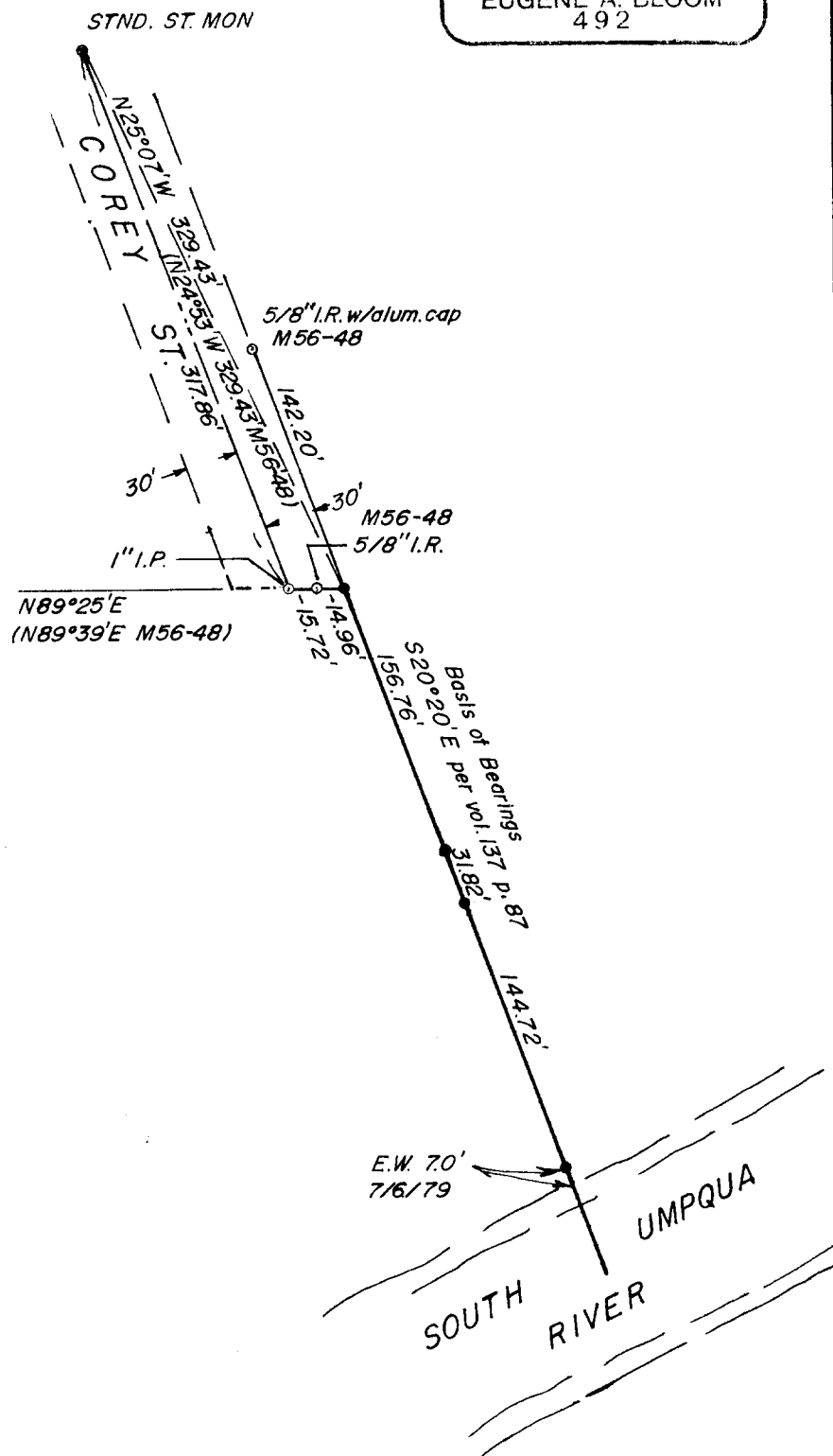
JULY 1979 — SCALE: 1"=100'

**COUNTY SURVEYORS FILE DATA
DO NOT REMOVE FROM OFFICE**

REGISTERED
PROFESSIONAL
LAND SURVEYOR

Eugene A. Bloom

OREGON
MAY 13, 1950
EUGENE A. BLOOM
492



LEGEND

- — Set 5/8" I.R.
- — Found Point, as noted