

# SURVEY FOR DEED DESCRIPTION

TO ADJUST PROPERTY LINE BETWEEN LOTS 13 & 14 GREENWOOD ACRES  
A SUBDIVISION OF LOTS 58, 70, 74, & 85 MELROSE  
ORCHARDS SECS. 35 & 36 T26S R7W W.M.  
SURVEYED FOR MARION FORTUNE BY BAUGHMAN SURVEYING SERVICE  
APRIL 16, 1976 SCALE 1"=100'

- SYMBOLS
- FD. 5/8" I.R.
  - SET 1/2" I.R.

**COUNTY SURVEYORS FILE DATA  
DO NOT REMOVE FROM OFFICE**

FILED ✓  
RECEIVED *et*

APR 21 1976

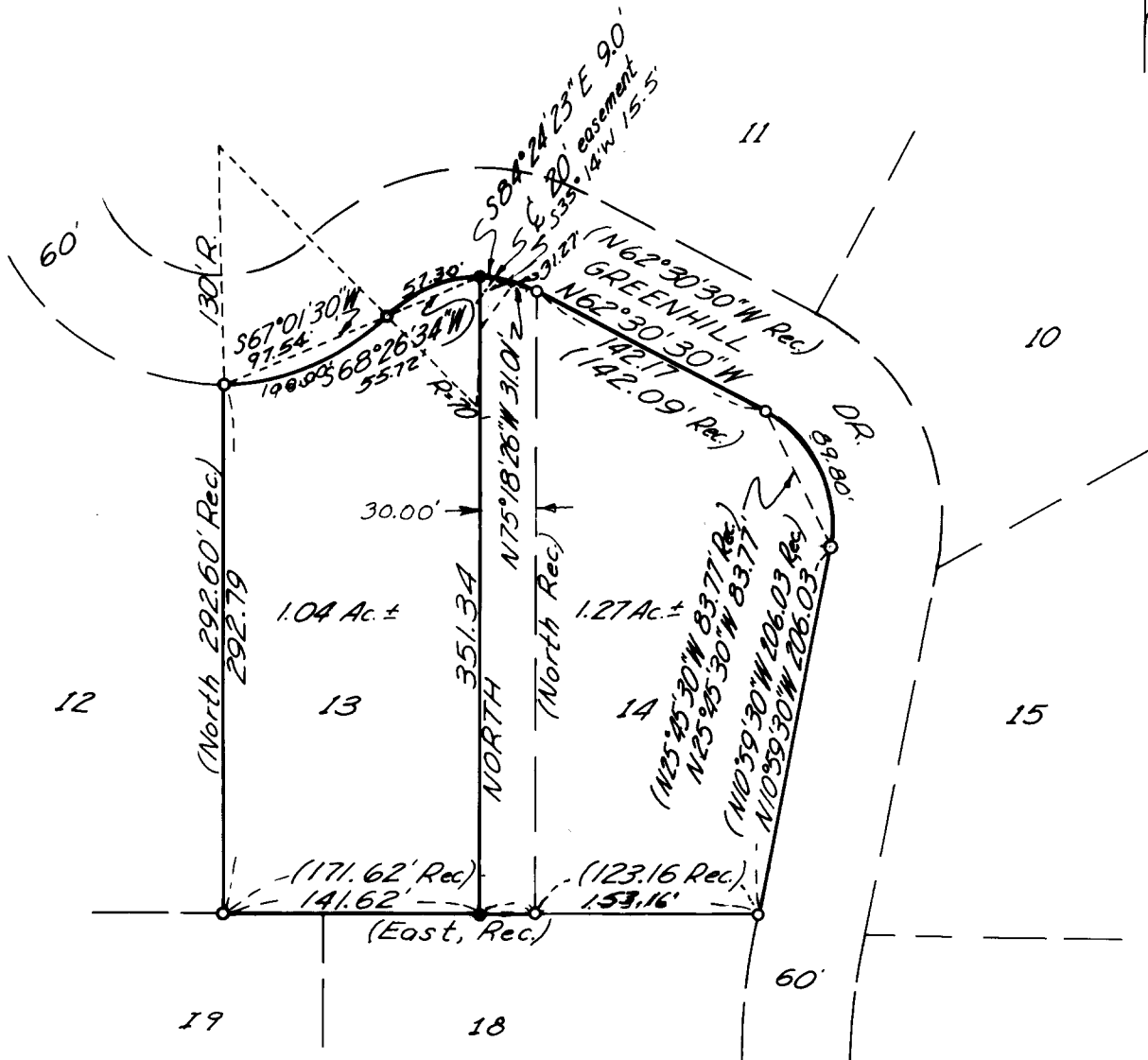
COUNTY SURVEYOR  
DOUGLAS COUNTY, ORE.

BEARINGS BASED ON WEST LINE OF LOT 13, NORTH.

REGISTERED  
PROFESSIONAL  
LAND SURVEYOR

*Eugene A. Bloom*

OREGON  
MAY 13, 1966  
EUGENE A. BLOOM  
392



36319