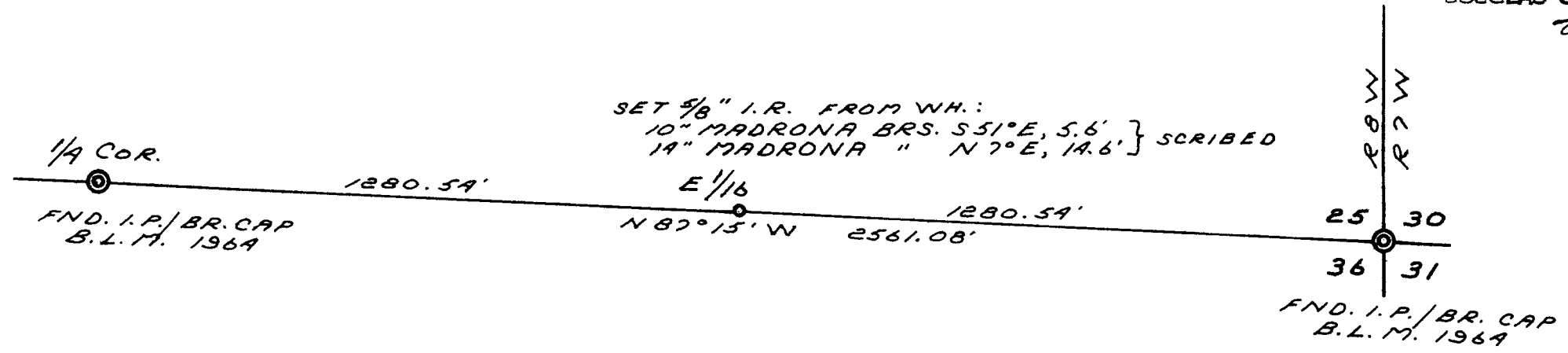


COUNTY SURVEYORS FILE DATA
DO NOT REMOVE FROM OFFICE

FILED ^{KC}
RECEIVED ²⁴

JAN 13 1976

COUNTY SURVEYOR
DOUGLAS COUNTY, ORE.
²



NORTH

REGISTERED
PROFESSIONAL
LAND SURVEYOR

Richard J. Hintz

OREGON
MAY 13, 1960
RICHARD J. HINTZ
497

PROPERTY SURVEY
FOR
WESTLOG, INC.
N 1/2 NE 1/4 NE 1/4, SECTION 36
T 25 S, R 8 W
DEC. 1975 SCALE 1" = 300'
BASIS FOR BRG.: DEC. 19° 30'