

**COUNTY SURVEYORS FILE DATA
DO NOT REMOVE FROM OFFICE**

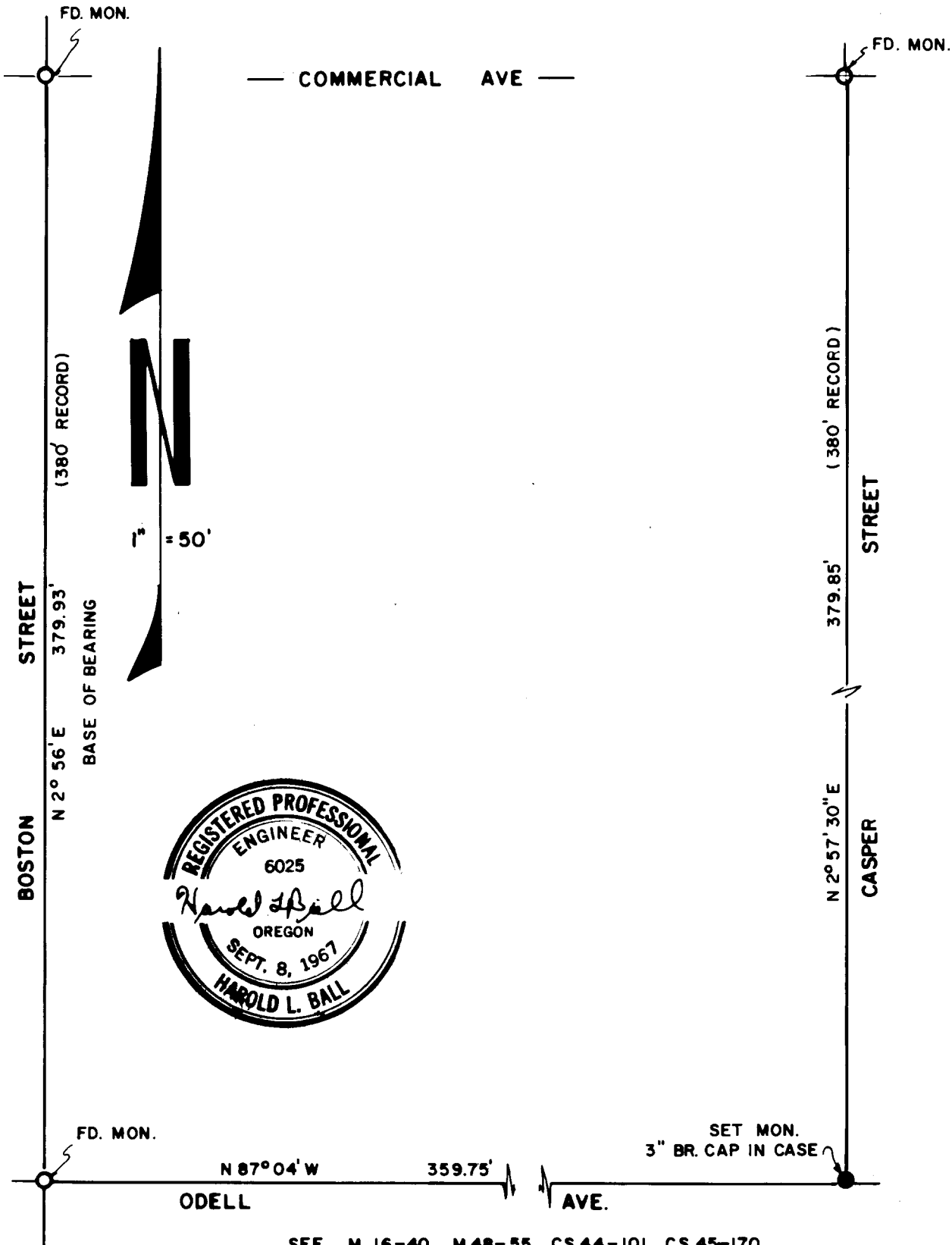
FILED *mg*
RECEIVED *KC*

SURVEY TO SET MONUMENT AT THE INTERSECTION OF ODELL
AVE. AND CASPER ST., KINNEY'S IMPROVED PLAT, ROSEBURG,
OREGON - SITUATED IN SEC'S 18 AND 19, T27S, R5W, W.M.

DEC 15 1975

**COUNTY SURVEYOR
DOUGLAS COUNTY, ORE.**

FOR THE CITY OF ROSEBURG
BY HAROLD BALL - CIVIL ENGINEER
DEC., 1975



SEE M 16-40, M 48-55, CS 44-101, CS 45-170