

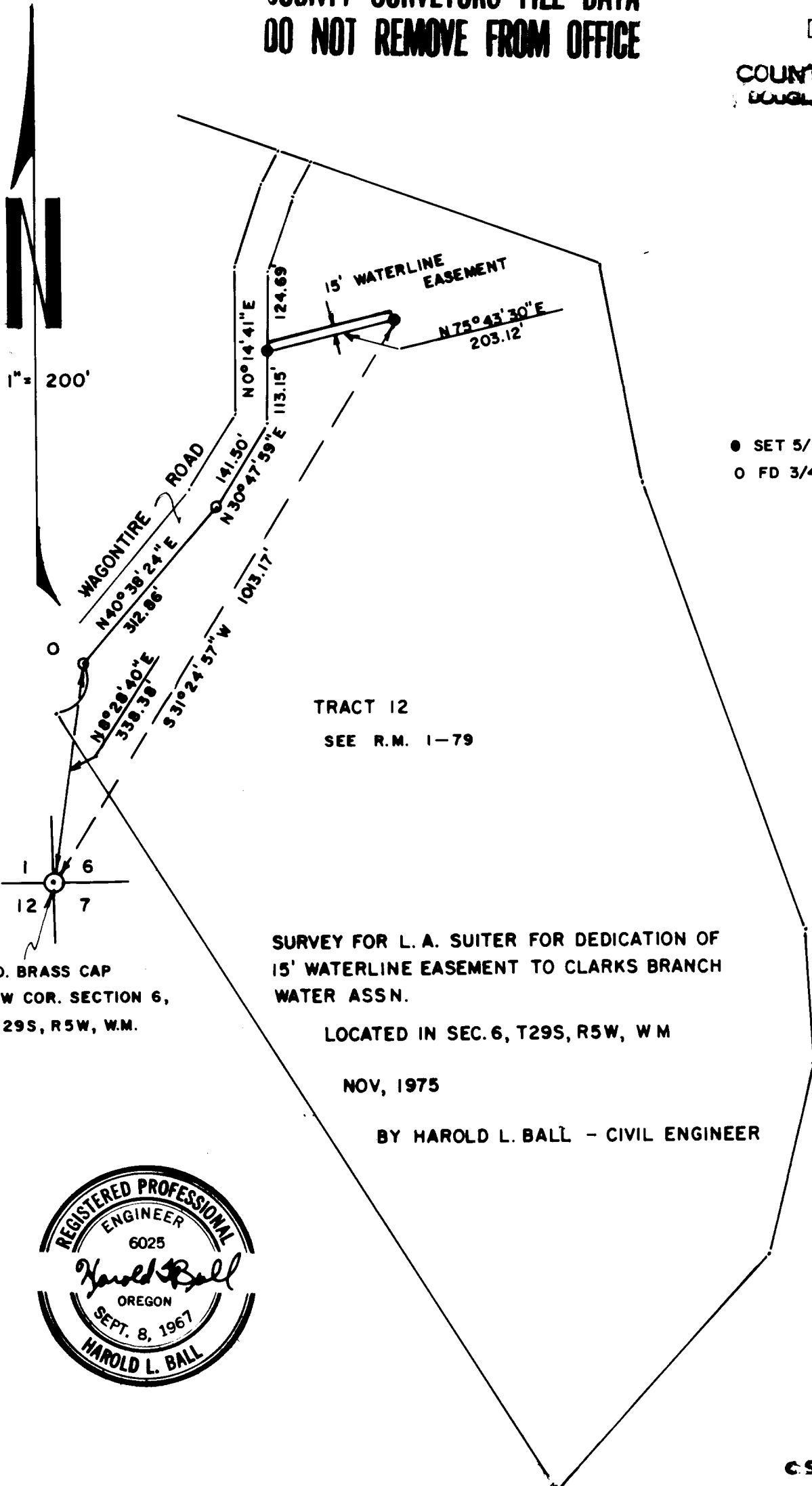
COUNTY SURVEYORS FILE DATA  
DO NOT REMOVE FROM OFFICE

FILED *mg*  
RECEIVED *mg*

DEC 1 1975

COUNTY SURVEYOR  
DOUGLAS COUNTY, ORE.

*v*



FD. BRASS CAP  
SW COR. SECTION 6,  
T29S, R5W, W.M.

