

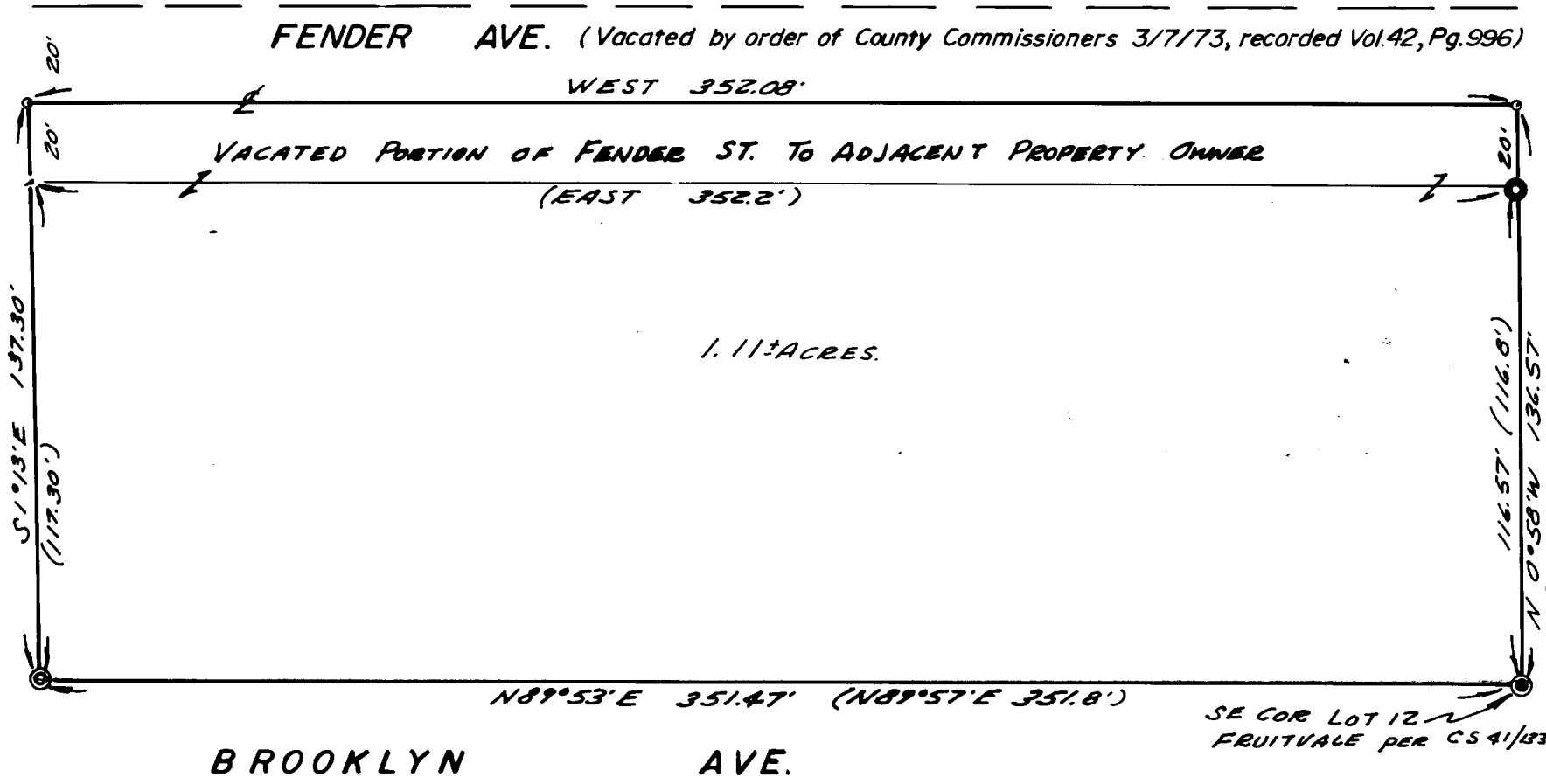
SURVEY TO SET PROPERTY CORNERS IN LOT 12, FRUITVALE-SEC. 12, T.27S.R.6W.W.M.

FILED *mg*
RECEIVED
1975

FOR: BILL LUTH
BY: BAUGHMAN SURVEYING SERVICE
NOVEMBER 1975

COUNTY SURVEYORS FILE DATA
DO NOT REMOVE FROM OFFICE
CLATSOP COUNTY, ORE.
file

SCALE: 1" = 40'



- LEGEND**
- — Set 1/2" iron rod
 - ⊙ — Fd. 1" iron pipe
 - — Fd. 3/4" iron pipe
 - ⊙ — Fd. 1" sq. iron bolt

REGISTERED
PROFESSIONAL
LAND SURVEYOR

Glenn S. Baughman
OREGON
JULY 14 1961
GLENN S. BAUGHMAN
536

35485