

PLAT OF

Sec. 30 Twp. 23 S Rge. 9 W

Douglas County, Oregon

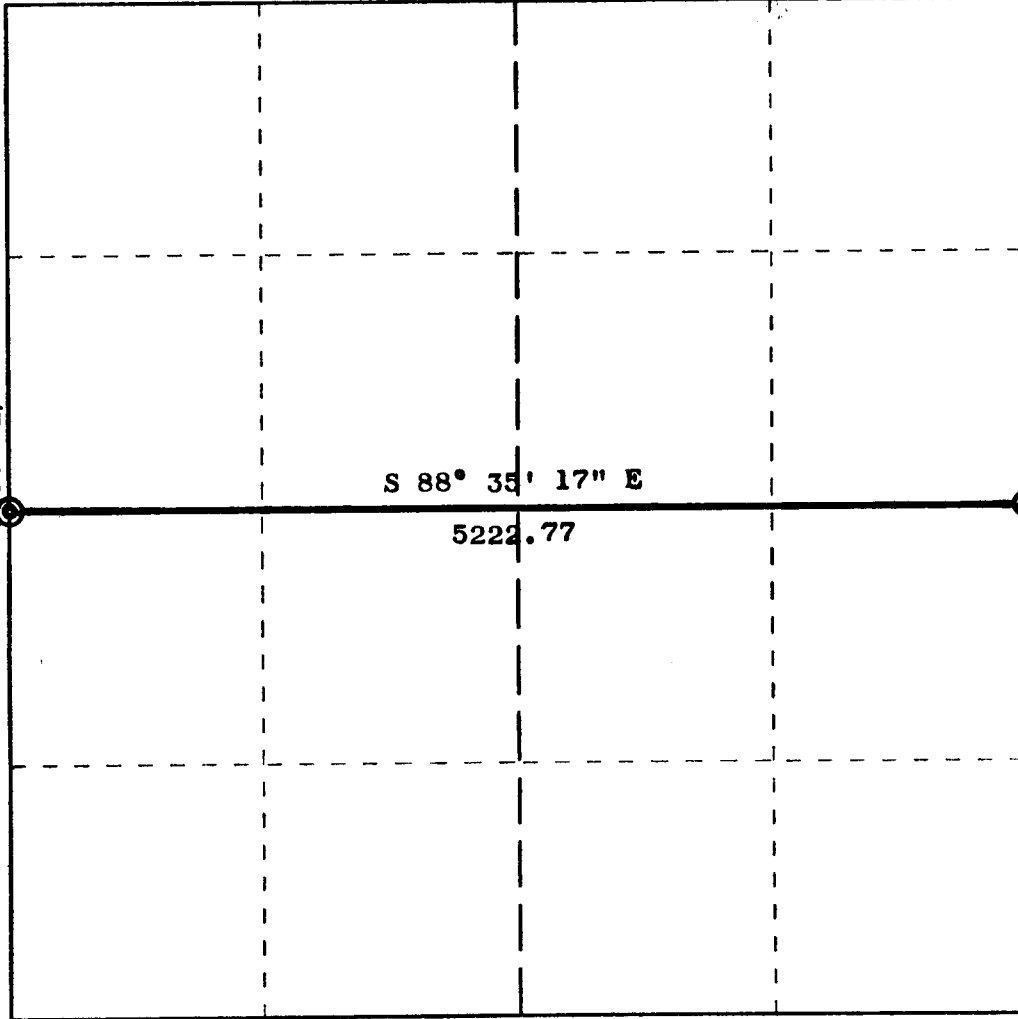
FILED 2
RECEIVED *mq*

NOV 3 1975

COUNTY SURVEYOR
DOUGLAS COUNTY, ORE.

Survey for
Mark Anspach

Fnd. 3/4" I.P., B.T.'s
C.S. 42/299



Fnd. I.P. Brass Cap, B.T.'s
Douglas County Surveyors Office 1973
C.S. 56/39

REMARKS: Basis for bearing: True from solar observation

Decl. 19° 30'

AERIAL PHOTO COVERAGE _____ SCALE 1:12, 000'

BY Richard J. Hintz #497

DATE October 15, 1975

COUNTY SURVEYORS FILE DATA
DO NOT REMOVE FROM OFFICE

58/133